



Visual DCT – Next Steps

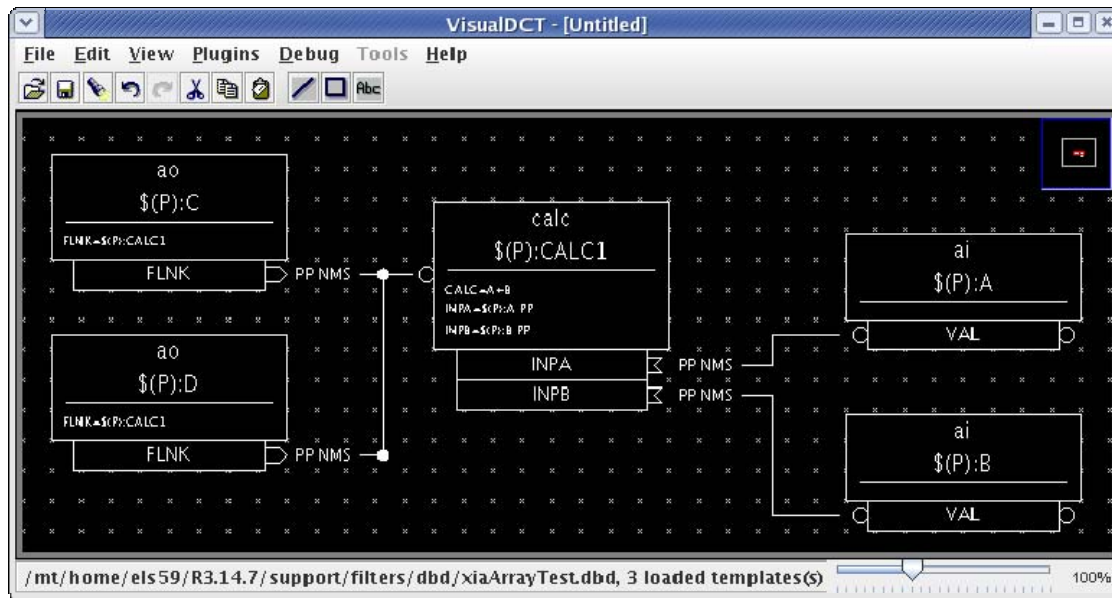
Igor Verstovšek (Cosylab), Emma Shepherd (DLS)

igor.verstovsek@cosylab.com

emma.shepherd@diamond.ac.uk



Visual Database Configuration Tool



The Inspector window shows the configuration for the '\$(P):CALC1 (calc)' object. It has tabs for 'Group', 'Alphabetical', and 'DBD Order'. The 'DBD Order' tab is selected, showing a table of parameters and their values.

GUI_DISPLAY		GUI_DISPLAY	
EGU		mm	
PREC			
HOPR			
LOPR			
ADEL			
MDEL			
GUI_CALC		GUI_CALC	
CALC		A+B	
INPA		\$(P):A PP	
INPB		\$(P):B PP	
INPC			
INPD			
INPE			
INPF			
INPG			
INPH			

Comment: This is a calculation record

Display Precision: Frozen

Center object

- Open source database configuration tool
- Designed as a CapFast replacement
- Written in Java
- Preserves db file format

<http://visualdct.cosylab.com>

- Package F released in December 2005
 - Usability enhancements

- Spreadsheet view
 - Easy input and editing of a large number of data
 - Copy / paste to and from Excel

- Storage of VDCT data into RDB
 - Also of visual data (in text format)

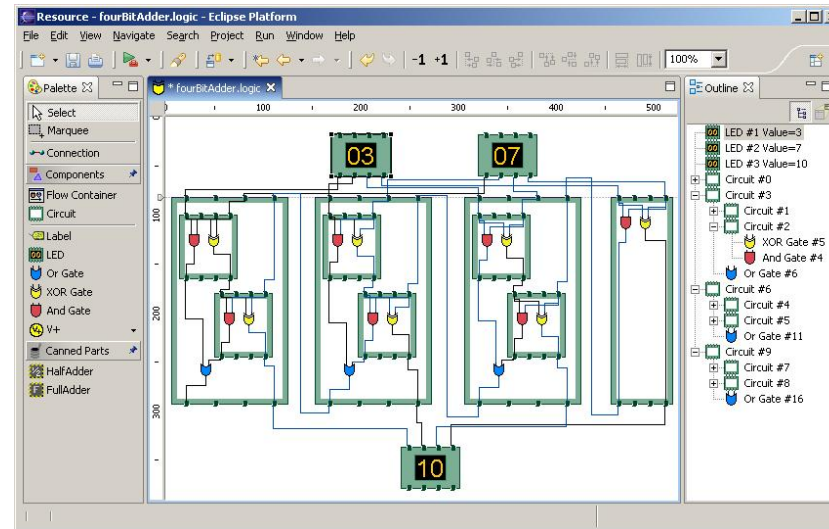
- Integration into Eclipse – two feasibility studies
 - Usability of GEF, EMF, GMF (with DLS)
 - Integration with the CSS (with DESY)

■ Eclipse Graphical Editing Framework (GEF)

- For better wire routing
- DB Hierarchy Tree View
- DB Design checker
- Eclipse Plug ins

■ Integration into CSS

- MB3 and Drag & Drop
- Navigate straight from a synoptic display to a database in VDCT
- Launch JProbe on a particular record



What next...

- Cosylab currently undertaking initial design / feasibility study on integrating VDCT into Eclipse
 - Main issue is suitability of GEF for the graphical editor
- **BUT nothing will happen without funding!**
 - Combine with maintenance support contract for other tools?
 - Initial proposal: £20k from 5 labs
 - Remember: an improved database configuration tool will increase productivity
 - Any thoughts / ideas...?