

# CSS Deployment @ NSLS2

## Lesson Learned

Michael Davidsaver  
Presented by: Gabriele Carcassi

# Overview

- Based on experiences using and supporting CSS @ NSLS2 beginning in Fall 2011.
- Deployment process
- Operational issues
  - Software
  - People

# The Problem

- 2 Control Rooms (soon to be 3)
  - Between 2-5 computers in each.
- 3 multi-user remote access systems
  - NoMachine NX
- 37 concurrent users (26 Apr 2013)
  - 23 CSS instances running
  - (A slow day)

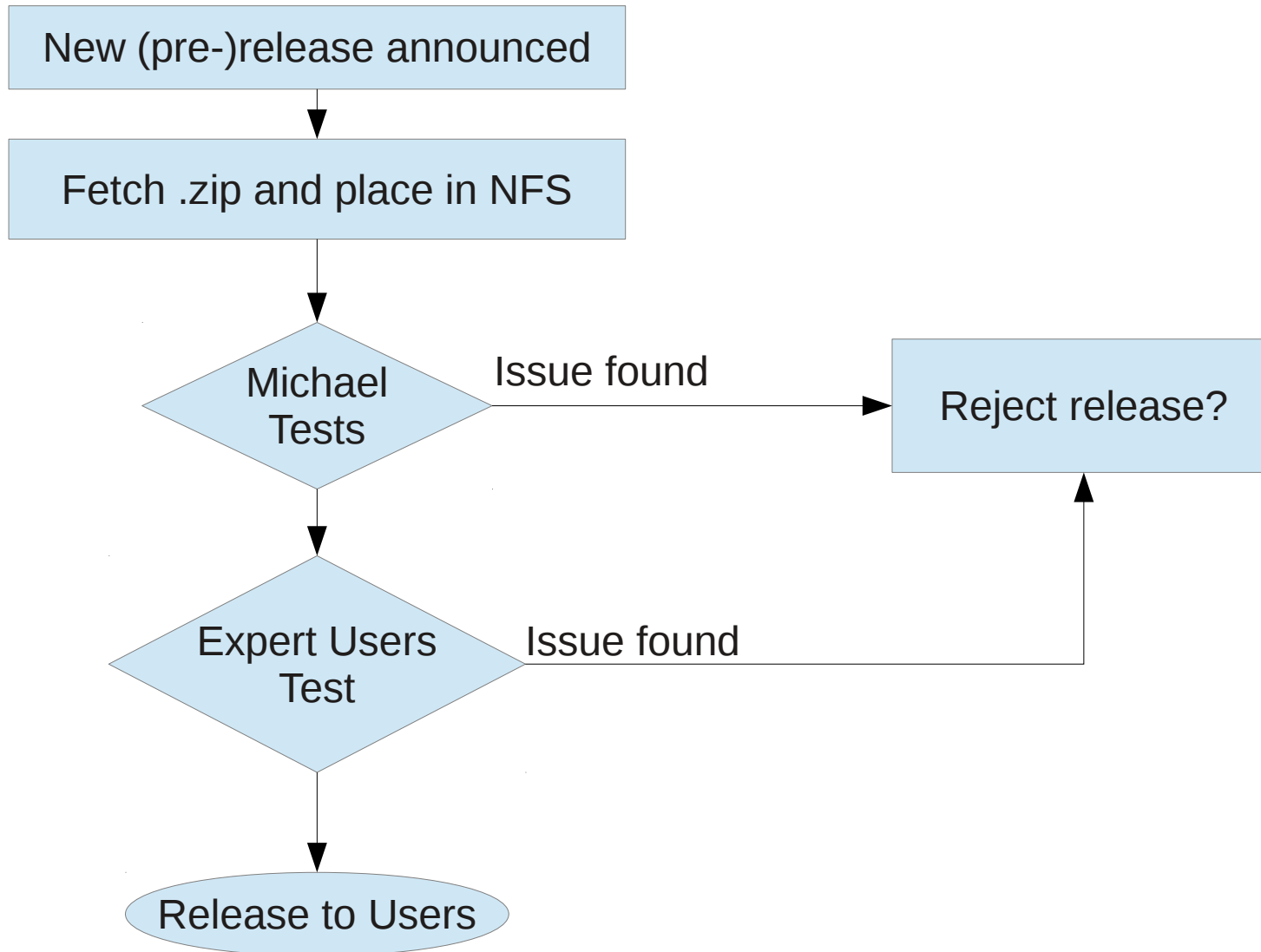
# Deployment goals

- Minimize the number of versions in use.
  - Fewer configurations to test
- Ensure that non-experts use tested version.
- Allow quick fallback to a previous version
- No first-time setup.
  - Quick and friendly to non-experts

# Technique

- Files served through NFS
  - All read-only!
  - Binaries and .opi files tracked separately
- Wrapper script to execute
  - Provide machine/version specific preferences file
  - Extra lock file and log file to find “lost” instances
  - “run-css”
- Several CSS-NSLS2 versions are available.

# Deployment Process



# BOY Deployment in practice

- Several versions can be in use at the same time
  - With the same .opi files. Compatibility is critical!
- Operations uses “stable” (older version)
- Controls developers using newer version
- Typically 1 month to evaluate a new release
  - Manual GUI testing is slow

# Michael's test procedure

- Targeted to BOY (most important tool for us)
- Side-by-side comparison of commonly used screens in both versions.
  - Eyeball diff is very selective
  - Poor coverage
  - Runtime: ~15 min
- Use the new version for a while
  - Includes expert/detail screens
  - Limited to the screens Michael uses
  - Runtime: ~1 month



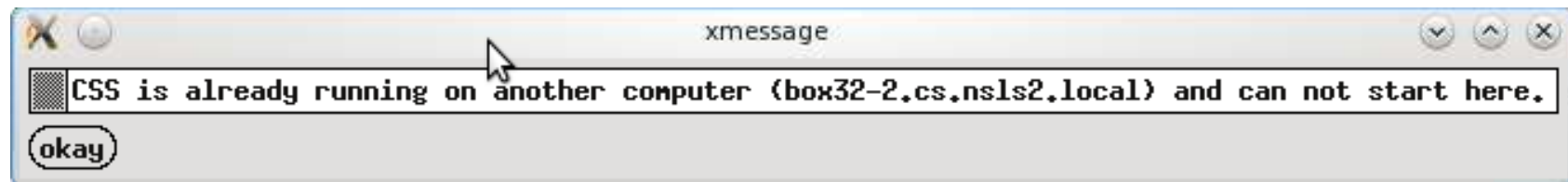
# Past regressions found

- BOY

- Change to property type causes all existing boolean buttons to request confirmation. Not critical, fix with script. 3.1.0 in production.
- Linking container draws differently when .opi read from disk vs. HTTP. Critical. 3.1.1 skipped.
- Change to plots with log scale gives labels in fixed precision decimal (vacuum always 0.000000). Not critical, fix with script. 3.1.2 in production
- 3.1.3 and 3.1.4 not considered due to time constraints
- Priority of top level (Display) macros changed. Critical. Skipped 3.1.5

# Operational issues

- Eclipse workspace + NFS home directory = “workspace already in use”
  - Users frequently leave CSS running on one console, then try to start it again from another.
  - Our **#1** support issue!
  - “Solved” with wrapper script.
  - Not perfect. Wrapper script can't stop running instance, or identify “stale” lockfiles.

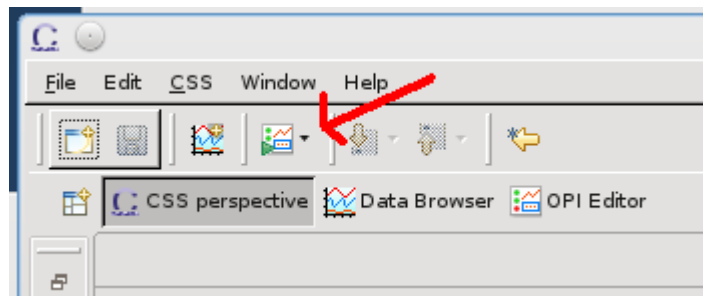


# Supporting CSS

- Most issues encountered in the control room.
  - RTFM is not well received at this point
- Support by phone is first line.
  - “I need to see what the user sees!”
  - Stateful GUI complicates

# Suggestions for Improvement (1)

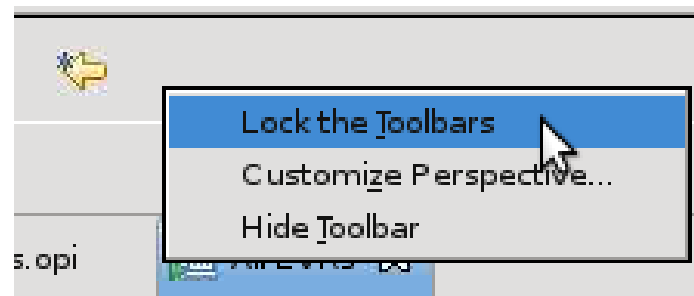
- Menu item and/or hot key for “Open Top OPI in run mode”.
  - The single most important button in CSS.
  - Difficult to describe over the phone.
    - Our **#2** support issue
  - Has moved between releases
  - Toolbar unintentionally/moved closed by users



As seen on postings in NSLS2 control rooms

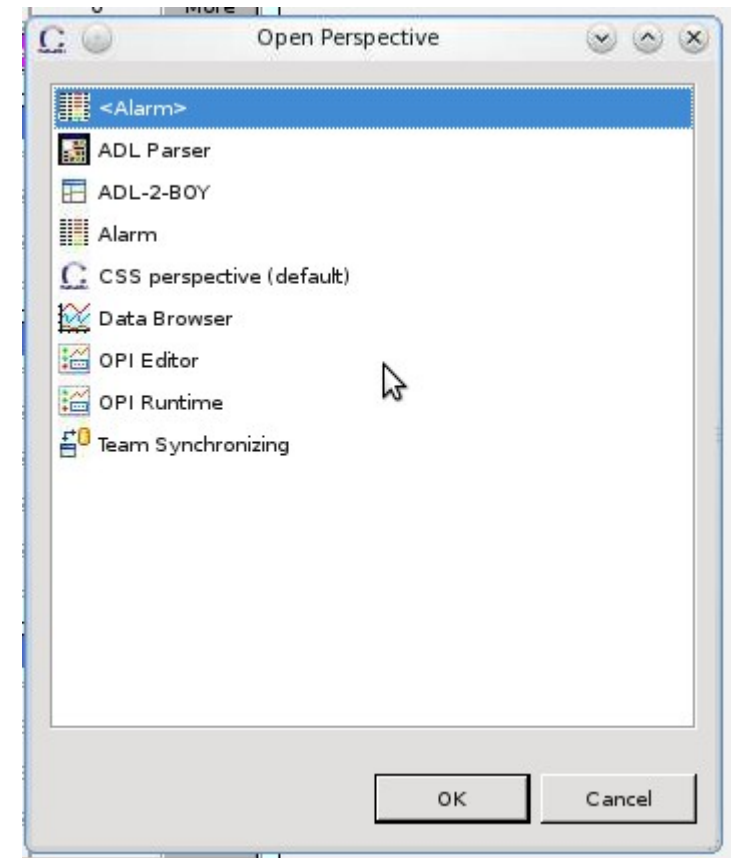
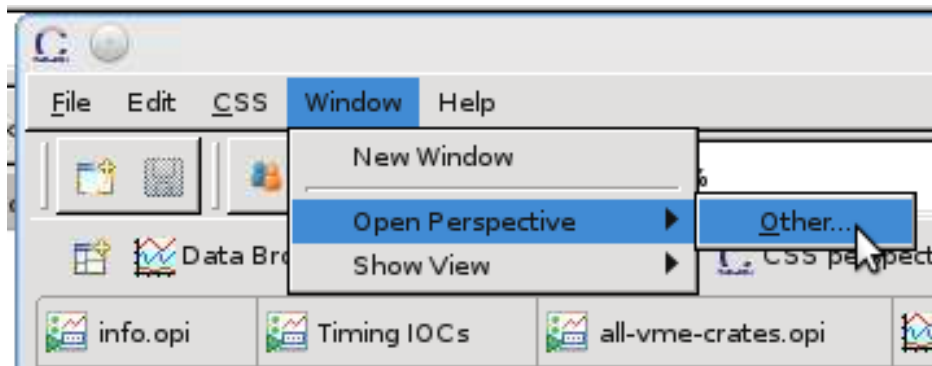
# Suggestions for Improvement (2)

- Lock toolbars by default
  - Non-expert users unintentionally move or close



# Suggestions for Improvement (3)

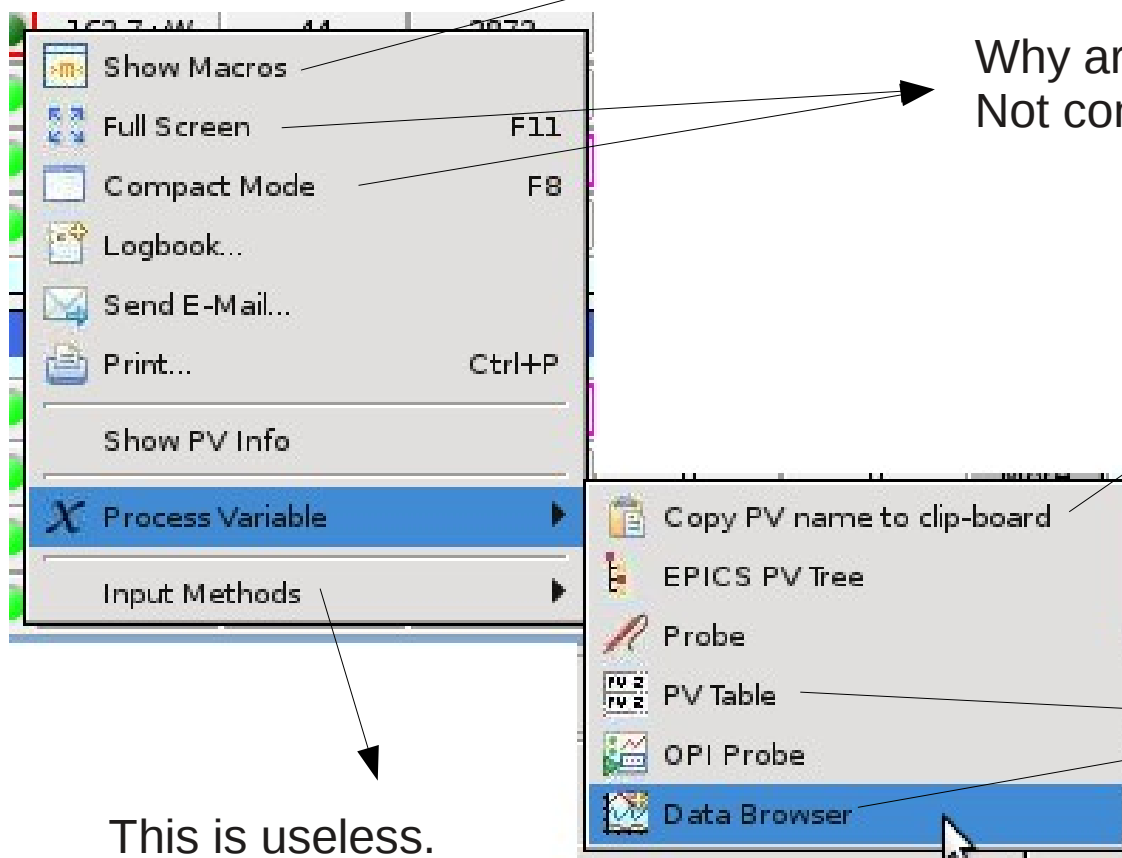
- Reduce number of mouse clicks



**Can the list of perspectives appear directly in a menu?**

# Suggestions for Improvement (4)

- Improve context menu



The image shows a screenshot of a software context menu. The menu is divided into two sections. The top section contains several utility items: 'Show Macros', 'Full Screen' (F11), 'Compact Mode' (F8), 'Logbook...', 'Send E-Mail...', 'Print...' (Ctrl+P), 'Show PV Info', 'Process Variable', and 'Input Methods'. The bottom section is a sub-menu for 'Process Variable' and contains: 'Copy PV name to clip-board', 'EPICS PV Tree', 'Probe', 'PV Table', 'QPI Probe', and 'Data Browser'. The 'Data Browser' item is highlighted with a mouse cursor. Arrows point from text annotations to specific items in the menu.

Useful for debugging, but not for users. Move this to bottom.

Why are these in the context menu? Not contextual...

The most useful entry! Move to top of parent menu for faster access?

Always starts a new table/plot.

How to add PV to existing table/plot w/o copy+paste?

This is useless. Can it be hidden?

# Conclusion?

- Difficulties in deploying CSS
  - Testing
    - BOY is our most important control room tool
    - Heavy usage means small issues have big impacts
  - Support
    - Eclipse based UIs have significant learning curve