

asynDriver

Table of Contents

<u>asynDriver: Asynchronous Driver Support</u>	1
<u>Other Contributors</u>	1
<u>License Agreement</u>	1
<u>Contents</u>	1
<u>Purpose</u>	2
<u>Status</u>	3
<u>Acknowledgments</u>	3
<u>Overview of asynDriver</u>	4
<u>Definitions</u>	4
<u>Standard Interfaces</u>	6
<u>Generic Interfaces</u>	6
<u>asynManager</u>	7
<u>Multiple Device vs Single Device Port Drivers</u>	10
<u>Connection Management</u>	11
<u>Protecting a Thread from Blocking</u>	11
<u>portThread</u>	11
<u>Theory of Operation</u>	12
<u>Initialization</u>	12
<u>Requesting access to a port</u>	13
<u>queueRequest - Flow of Control</u>	13
<u>asynDriver Structures and Interfaces</u>	15
<u>asynStatus</u>	16
<u>asynException</u>	16
<u>asynQueuePriority</u>	16
<u>asynUser</u>	17
<u>asynInterface</u>	18
<u>asynManager</u>	18
<u>asynCommon</u>	25
<u>asynCommonSyncIO</u>	25
<u>asynDrvUser</u>	25
<u>asynLockPortNotify</u>	26
<u>asynOption</u>	26
<u>Trace Interface</u>	27
<u>asynTrace</u>	28
<u>Standard Message Based Interfaces</u>	31
<u>asynOctet</u>	31
<u>asynOctetSyncIO</u>	33
<u>End of String Support</u>	34
<u>Standard Register Based Interfaces</u>	34
<u>Introduction</u>	34
<u>addr - What does it mean for register based interfaces?</u>	35
<u>Example Drivers</u>	35
<u>asynInt32</u>	36
<u>asynInt32SyncIO</u>	37
<u>asynUInt32Digital</u>	38
<u>asynUInt32DigitalSyncIO</u>	39
<u>asynFloat64</u>	40
<u>asynFloat64SyncIO</u>	41

Table of Contents

asynDriver: Asynchronous Driver Support

<u>asynXXXArray (where XXX is Int8, Int16, Int32, Float32 or Float64)</u>	42
<u>asynXXXArraySyncIO</u>	43
<u>asynEnum</u>	44
<u>asynEnumSyncIO</u>	45
<u>asynGenericPointer</u>	46
<u>asynGenericPointerSyncIO</u>	47
<u>asynStandardInterfacesBase</u>	48
<u>asynStandardInterfaces structure</u>	48
<u>asynStandardInterfacesBase interface</u>	49
<u>Standard Interpose Interfaces</u>	51
<u>asynInterposeEos</u>	51
<u>asynInterposeFlush</u>	51
<u>Generic Device Support for EPICS records</u>	52
<u>asynManager interrupts and EPICS device support</u>	53
<u>Initial values of output records</u>	53
<u>Enum values for bi, bo, mbbi, and mbbo records</u>	53
<u>Time stamps</u>	54
<u>asynInt32 device support</u>	54
<u>asynIntXXXArray device support (XXX=8, 16 or 32)</u>	57
<u>asynXXXTimeSeries device support (XXX=Int32 or Float64)</u>	57
<u>devAsynUInt32Digital</u>	57
<u>devAsynFloat64 device support</u>	59
<u>asynFloatXXXArray device support (where XXX=32 or 64)</u>	60
<u>octet device support</u>	60
<u>Record alarms</u>	61
<u>asynRecord: Generic EPICS Record Support</u>	62
<u>Example</u>	63
<u>Test Application</u>	65
<u>asynGpib</u>	68
<u>asynGpibDriver.h</u>	68
<u>asynGpib</u>	69
<u>asynGpibPort</u>	70
<u>Port Drivers</u>	70
<u>Local Serial Port</u>	70
<u>TCP/IP or UDP/IP Port</u>	72
<u>TCP/IP Server</u>	73
<u>VXI-11</u>	74
<u>Linux-Gpib</u>	75
<u>Green Springs IP488</u>	76
<u>National Instruments GPIB-1014D</u>	76
<u>asynPortDriver C++ base class</u>	77
<u>Diagnostic Aids</u>	77
<u>iocsh Commands</u>	77
<u>Install and Build</u>	79
<u>Install and Build asynDriver</u>	79
<u>Using asynDriver Components with an EPICS iocCore Application</u>	80
<u>License Agreement</u>	80

asynDriver: Asynchronous Driver Support

Release 4-22

Mark Rivers, Eric Norum, and Marty Kraimer

October 30, 2013

Other Contributors

Gasper Jansa (cosyLab) - linuxGpib support.

License Agreement

This product is available via the [open source license](#) described at the end of this document.

Contents

[Purpose](#)

[Status](#)

[Acknowledgments](#)

[Overview of asynDriver](#)

[Theory of Operation](#)

[asynDriver Structures and Interfaces](#)

[Standard Message Based Interfaces](#)

[Standard Register Based Interfaces](#)

[asynStandardInterfacesBase](#)

[Standard Interpose Interfaces](#)

[Generic Device Support for EPICS records](#)

[asynRecord: Generic Record Support](#)

[Example](#)

[Test Example](#)

[asynGpib](#)

[Port Drivers](#)

- [Local Serial Port](#)
- [TCP/IP or UDP/IP Port](#)
- [TCP/IP or UDP/IP Server](#)
- [VXI-11](#)
- [Linux-Gpib](#)
- [Green Springs IP488](#)
- [National Instruments GPIB-1014D](#)

[asynPortDriver C++ base class](#)

[Diagnostic Aids](#)

[Install and Build](#)

Purpose

asynDriver is a general purpose facility for interfacing device specific code to low level drivers. asynDriver allows non-blocking device support that works with both blocking and non-blocking drivers.

A primary target for asynDriver is EPICS IOC device support but, other than using libCom, much of it is independent of EPICS.

asynDriver has the following key concepts:

- Device support communicates with drivers via interfaces

Drivers take care of the details of how to communicate with a device and implement interfaces for use by device support. Interfaces are defined for both message and register based devices. In the past when support was written for a new type of device, device support for standard EPICS records had to be written in addition to the driver support. Now a driver just implements one or more of the standard interfaces.

- A port provides access to device instances

A port, which has a portName, identifies a communication path to one or more device instances. For example a GPIB port can have up to 15 devices connected to it. An RS232 port communicates with a single device. Drivers register a port. Device support connects to a port.

- asynManager controls access to a port

asynManager, a component of asynDriver, provides exclusive access to a driver via calls to queueRequest, lockPort/unlockPort, and queueLockPort/queueUnlockPort. Once device support has access, it can make an arbitrary number of calls to the driver knowing that no other support can call the driver. Device and driver support do not need to implement queues or semaphores since asynManager does this for them.

- asynTrace provides a general purpose diagnostic facility

Rules are defined for providing diagnostic messages. Provided device and driver support follow the rules, a user can obtain several levels of diagnostic information that can be displayed on the console, written to a file, or sent to the EPICS errlog facility.

- asynRecord - Generic access to an device/port

asynRecord is an EPICS record and set of associated MEDM displays that provide access to:

- ◆ A port or a device connected to a port

The port or port,addr can be changed dynamically. Thus with one asynRecord in an IOC, it is possible to talk to any device that has an asyn compatible driver.

- ◆ asynTrace - All asynTrace options can be specified asynRecord.
- ◆ Connection Management

Display and change connection, enable, and autoConnect state

- ◆ Standard interfaces

These can be used to communicate with devices. For example if a new instrument arrives that has a serial, gpib, or ethernet port, then it is often possible to communicate with it just by attaching an asynRecord to it.

- Extensive Serial Support

asynDriver provides many facilities for communicating with RS232, RS485, GPIB, and ethernet.

Status

This version provides

- asynManager: the software layer between device support and drivers.
- asynRecord: EPICS record support that provides a generic interface to asynManager, asynCommon, asynOctet, asynGpib, and other interfaces.
- asynPortDriver: a C++ base class that makes it easy to write asyn drivers, with much of the boilerplate asyn code handled in the base class methods.
- standard interfaces: Standard message and register based interfaces are defined. Low Level Drivers implement standard interfaces. Device support communicates with low level drivers via standard interfaces.
- devEpics: Generic device support for EPICS records.
- devGpib: EPICS device support that replaces the device support layer of the Winans/Franksen gpibCore support.
- asynGpib: a replacement for the drvGpibCommon layer of the Franksen gpibCore support.
- drvAsynSerialPort: Support for devices connected to serial ports.
- drvAsynIPPort: Support for TCP/IP and UDP/IP socket communication, including serial devices accessed via Ethernet/Serial converter boxes.
- drvAsynIPServerPort: Support for asyn socket servers that are accessed from remote clients. TCP/IP sockets are supported, UDP is not currently supported.
- VXI-11: A replacement for the VXI-11 support of the Franksen gpibCore support.
- Linux-gpib: Support for the Linux GPIB Package library.
- gsIP488: A low level driver for the Greensprings IP488 Industry Pack module.
- ni1014: A low level driver for the National Instruments VME 1014D.
- Serial Bus Support: The asynLockPortNotify interface was added to make it easier to support serial bus drivers that use the standard serial support.

The following are some of the existing EPICS general purpose device support systems that have been converted to use asynDriver.

- StreamDevice. This is the protocol file-based support for serial/GPIB/CAN from Dirk Zimoch.
 - gpibCore. This is the operating-system-independent version of the Winans/Franksen GPIB support.
 - synApps (The APS BCDA synchrotron applications). The mca, dxp, motor, Ip330, IpUnidig, DAC128V and quadEM applications in this package have all been converted to asyn. The serial and GPIB modules in this package are no longer needed, because the asyn record replaces them. The areaDetector module was written to use asyn, and was the original motivation for the development of asynPortDriver.
-

Acknowledgments

The idea of creating asynDriver resulted from many years of experience with writing device support for serial and GPIB devices. The following individuals have been most influential.

John Winans

asynDriver

John provided the original EPICS GPIB support. Databases using John's support can be used without modification with devGpib. With small modifications, device support modules written for John's support can be used.

Benjamin Franksen

John's support only worked on vxWorks. In addition, the driver support was implemented as a single source file. Benjamin defined an interface between drvCommon and low level controllers and split the code into drvGpib and the low level drivers. He also created the support for drvVxi11.

Eric Norum

Eric started with Benjamin's code and converted it to use the Operating System Independent features of EPICS 3.14.

Marty Kraimer

Marty started with Eric's version and made changes to support secondary addressing; and to replace ioctl with code to support general bus management, universal commands, and addressed commands.

Pete Owens

Pete, for the Diamond Light Source, did a survey of several types of device/driver support packages for serial devices. Diamond decided to use the StreamDevice support developed by Dirk Zimoch.

Dirk Zimoch

Dirk developed StreadDevice, which has a single device support model, but supports arbitrary low level message based drivers, i.e. GPIB, serial, etc.

Jun-ichi Odagare

Jun-ichi developed NetDev, a system that provides EPICS device support for network based devices. It has a single device support model, but provides a general framework for communicating with network based devices.

Mark Rivers

Mark became an active developer of asynDriver soon after he started converting SynApps to use asynDriver. He soon pushed to have asynDriver support synchronous drivers, support register based drivers, and support interrupts. With these additions asynDriver is a framework for interfacing to a large class of devices instead of just message based asynchronous devices.

Yevgeny A. Gusev

Yevgeny has found bugs and suggested improvements in the way asynManager handles queue timeouts and cancels. He provides an expert and welcome set of eyes to look at difficult code!!!

Overview of asynDriver

Definitions

asynDriver is a software layer between device specific code and drivers that communicate with devices. It supports both blocking and non-blocking communication and can be used with both register and message based devices. asynDriver uses the following terminology:

- interface

All communication between software layers is done via interfaces. An interface definition is a C language structure consisting entirely of function pointers. An asynDriver interface is analogous to a C++ or Java pure virtual interface. Although the implementation is in C, the spirit is object oriented. Thus this document uses the term "method" rather than "function pointer".

- port

A physical or logical entity which provides access to a device. A port provides access to one or more devices.

asynDriver

- portDriver

Code that communicates with a port.

- portThread

If a portDriver can block, a thread is created for each port, and all I/O to the portDriver is done via this thread.

- device

A device (instrument) connected to a port. For example a GPIB interface can have up to 15 devices connected to it. Other ports, e.g. RS-232 serial ports, only support a single device. Whenever this document uses the word device without a qualifier, it means something that is connected to a port.

- device support

Code that interacts with a device.

- synchronous

Support that does not voluntarily give up control of the CPU.

- asynchronous

Support that is not synchronous. Some examples of asynchronous operations are epicsThreadSleep, epicsEventWait, and stdio operations. Calls to epicsMutexTake are considered to be synchronous operations, i.e. they are permitted in synchronous support.

- asynDriver

The name for the support described in this manual. It is also the name of the header file that describes the core interfaces.

- asynManager

An interface and the code which implements the methods for interfaces asynManager and asynTrace.

- asynchronous Driver

A driver that blocks while communicating with a device. Typical examples are serial, gpib, and network based drivers.

- synchronous Driver

A driver that does not block while communicating with a device. Typical examples are VME register based devices.

- Message Based Interfaces

Interfaces that use octet arrays for read/write operations.

- Register Based Interfaces

Interfaces that use integers or floats for read/write operations.

- interrupt

As implemented by asynManager, interrupt just means "I have a new value for port, address".

Synchronous/asynchronous and message/register are orthogonal concepts. For example a register based driver can be either synchronous or asynchronous. The terminology register vs message is adapted from VXI.

asynDriver

Standard interfaces are defined so that device specific code can communicate with multiple port drivers. For example if device support does all its communication via reads and writes consisting of 8 bit bytes (octets), then it should work with all port drivers that support octet messages. If device support requires more complicated support, then the types of ports will be more limited. Standard interfaces are also defined for drivers that accept 32 bit integers or 64 bit floats. Additional interfaces can be defined, and it is expected that additional standard interfaces will be defined.

One or more devices can be attached to a port. For example, only one device can be attached to an RS-232 port, but up to 15 devices can be attached to a GPIB port.

Multiple layers can exist between device specific code and a port driver. A software layer calls `interposeInterface` in order to be placed between device specific code and drivers. For more complicated protocols, additional layers can be created. For example, GPIB support is implemented as an `asynGpib` interface which is called by user code, and an `asynGpibPort` interface which is called by `asynGpib`.

A driver normally implements multiple interfaces. For example `asynGpib` implements `asynCommon`, `asynOctet`, and `asynGpib`.

`asynManager` uses the Operating System Independent features of EPICS base. It is, however, independent of record/device support. Thus, it can be used by other code, e.g. a sequence program.

Standard Interfaces

These are interfaces provided by `asynManager` or interfaces implemented by all or most port drivers.

The interfaces are:

`asynManager` provides services for communicating with a device connected to a port.

`asynCommon` is an interface that must be implemented by all low level drivers. The methods are:

- `report` - Report status of port.
- `connect` - Connect to the port or device.
- `disconnect` - Disconnect from the port or device.

`asynTrace` is an interface for generating diagnostic messages.

`asynLockPortNotify` is an interface that is implemented by a driver which is an `asynUser` of another driver. An example is a serial bus driver that uses standard serial support. `asynManager` calls `asynLockPortNotify` whenever it locks or unlocks the port.

`asynDrvUser` is an interface for communicating information from device support to a driver without the device support knowing any details about what is passed.

Generic Interfaces

In addition to `asynCommon` and optionally `asynDrvUser`, port drivers can implement one or more of the following message and/or register based interfaces.

`asynOctet` methods for message based devices

asynDriver

asynFloat64 methods for devices that read/write IEEE float values

asynFloat32Array methods for devices that read/write arrays of IEEE 32-bit float values

asynFloat64Array methods for devices that read/write arrays of IEEE 64-bit float values

asynInt32 methods for devices that read/write integer values. Many analog I/O drivers can use this interface.

asynInt8Array methods for devices that read/write arrays of 8-bit integer values

asynInt16Array methods for devices that read/write arrays of 16-bit integer values

asynInt32Array methods for devices that read/write arrays of 32-bit integer values

asynUInt32Digital methods for devices that read/write arrays of digital values. This interface provides a mask to address individual bits within registers.

asynGenericPointer methods for devices that read/write arbitrary structures, passed via a void* pointer. The client and the server of course need to agree on the structure type being pointed to.

asynManager

asynManager is an interface and associated code. It is the "heart" of asynDriver since it manages the interactions between device support code and drivers. It provides the following services:

- reporting

Method: report

- asynUser creation

Methods: createAsynUser, duplicateAsynUser, freeAsynUser

An asynUser is a "handle" for accessing asynManager services and for calling interfaces implemented by drivers. An asynUser must only be created via a call to createAsynUser or duplicateAsynUser since asynManager keeps private information for each asynUser. freeAsynUser puts the asynUser on a free list rather than calling free. Clients can continually create and free asynUsers quickly and without fragmenting memory.

The call to createAsynUser specifies a processCallback and a timeoutCallback. These are the callbacks that will be called as a result of a queueRequest.

An asynUser should not be shared between parts of code that can simultaneously access a driver. For example device support for standard EPICS records should create an asynUser for each record instance.

- Basic asynUser services

Methods: connectDevice, disconnect, findInterface

These methods should only be called by the code that created the asynUser.

After an asynUser is created the user calls connectDevice. The user is connected to a port driver that can

asynDriver

communicate with a device. `findInterface` is called for each interface the user requires. `disconnect` is called when the user is done with the device.

- Queuing services

Methods: `queueRequest`, `cancelRequest`, `lockPort`, `unlockPort`, `queueLockPort`, `queueUnlockPort`, `blockProcessCallback`, `unblockProcessCallback`

`queueRequest` is a request to call the `processCallback` specified in the call to `createAsynUser`. Most interface methods must only be called from `processCallback` via a call to `queueRequest` or between calls to `lockPort/unlockPort`. Exceptions to this rule must be clearly documented (a common exception are methods `registerInterruptUser/cancelInterruptUser`).

`queueRequest` semantics differ for ports that can block and ports that do not block

When `registerPort` is called by a driver that can block, a thread is created for the port. A set of queues, based on priority, is created for the thread. `queueRequest` puts the request on one of the queues. The port thread takes the requests from the queues and calls the associated callback. Only one callback is active at a time.

When `registerPort` is called by a driver that does not block, a mutex is created for the port. `queueRequest` takes the mutex, calls the callback, and releases the mutex. The mutex guarantees that two callbacks to a port are not active at the same time.

`lockPort` is a request to lock all access to low level drivers until `unlockPort` is called. If the port blocks then `lockPort` and all calls to the port driver may block. `lockPort/unlockPort` are provided for use by code that is willing to block or for communication with synchronous ports. A call to `lockPort` locks all addresses associated with a multi-address port. Prior to asyn R4-14 `pasynManager->lockPort()` immediately took the port mutex when it was available, rather than queuing a request to take the mutex. From asyn R4-14 to R4-20 `lockPort` queues a request to access the port and then blocks until the queue request callback runs in the portThread. When the queue request runs, the thread that called `pasynManager->lockPort()` executes, and the portThread blocks, until `pasynManager->unlockPort()` is called. In R4-21 the queued `lockPort` and `unlockPort` functions were renamed to `queueLockPort` and `queueUnlockPort`, and the original lightweight `lockPort` and `unlockPort` functions were restored.

`blockProcessCallback` is a request to prevent access to a device or port by other `asynUsers` between `queueRequests`. `blockProcessCallback` can be called from a `processCallback` or when the `asynUser` has no request queued. When called from `processCallback` blocking starts immediately, otherwise blocking starts the next time `processCallback` is called. Blocking means that no other `asynUser's` `processCallback` will be called until `unblockProcessCallback` is called. `blockProcessCallback` only works with drivers that can block and an error is returned if it is called for non-blocking drivers.

- Basic Driver services

Methods: `registerPort`, `registerInterface`

`registerPort` is called by a `portDriver`. `registerInterface` is called by a `portDriver` or an `interposeInterface`.

Each port driver provides a configuration command that is executed for each port instance. The configuration command performs port specific initializations, calls `registerPort`, and `registerInterface` for each interface it implements.

- Attribute Retrieval

asynDriver

Methods: isMultiDevice, canBlock, getAddr, getPortName, isConnected, isEnabled, isAutoConnect

These methods can be called by any code that has access to the asynUser

- Connection services

Methods: enable, autoConnect, setAutoConnectTimeout

These methods can be called by any code that has access to the asynUser.

These methods can be called to set the enable and autoConnect settings for a port and/or device. If autoConnect is true then asynManager does the following:

- ◆ When the port registers its asynCommon interface, asynManager queues a connection request. It then waits for a short time for the connection callback to complete. The default time is 0.5 seconds, but this time can be changed with a call to the function pasynManager->setAutoConnectTimeout(double timeout). This function can be accessed from the iocsh shell with the asynSetAutoConnectTimeout(double timeout) command. This short timeout is designed to allow devices time to connect if they are available, but not to excessively slow down booting of the IOC by waiting, for example, for the system timeout on TCP connections. Note that this means that it is very likely that the pasynCommon->connect() call will occur as soon as the asynCommon interface is registered, which means that the driver must have already done all initialization required for the asynCommon->connect() callback before it registers the asynCommon interface. If the port does not connect initially, or if it subsequently disconnects, then asynManager will queue a connection request every 20 seconds. If autoConnect is true and port/device is enabled but the device is not connected, then queueManager calls calling asynCommon:connect just before it calls processCallback.

- Exception services

Methods: exceptionCallbackAdd, exceptionCallbackRemove, exceptionConnect, exceptionDisconnect

Device support code calls exceptionCallbackAdd and exceptionCallbackRemove. The complete list of exceptions is defined in asynDriver.h as "enum asynException".

Whenever a port driver connects or disconnects, normally as a result of a call to asynCommon:connect or asynCommon:disconnect, it must also call exceptionConnect or exceptionDisconnect.

- Interrupt services

Methods: registerInterruptSource, getInterruptPvt, createInterruptNode, freeInterruptNode, addInterruptUser, removeInterruptUser, interruptStart, interruptEnd

Interrupt just means: "I have a new value." Many asyn interfaces, e.g. asynInt32, provide interrupt support. These interfaces provide methods addInterruptUser and removeInterruptUser. Device support calls addInterruptUser if it wants to be called whenever an interrupt occurs. Drivers or other code that implements the interface calls the registered users when it has new data. asynManager provides services that help drivers implement thread-safe support for interrupts.

A driver that supports interrupts calls registerInterruptSource for each interface that has associated interrupts. It calls interruptStart to obtain a list of all registered users and interruptEnd after it calls the registered users. The driver is also responsible for calling addInterruptUser and removeInterruptUser.

asynDriver

If any calls are made to `addInterruptUser` or `removeInterruptUser` between the calls to `interruptStart` and `interruptEnd`, `asynManager` puts the request on a list and processes the request after `interruptEnd` is called.

Many standard interfaces, e.g. `asynInt32`, provide methods `registerInterruptUser`, `cancelInterruptUser`. These interfaces also provide an auxiliary interface, e.g. `asynInt32Base`, and code which implements `registerInterruptUser` and `cancelInterruptUser`.

On operating systems like `vxWorks` or `RTEMS` `interruptStart`, `interruptEnd` MUST NOT be called from interrupt level.

- Timestamp services

Methods: `updateTimeStamp`, `getTimeStamp`, `setTimeStamp`, `registerTimeStampSource`, `unregisterTimeStampSource`.

These methods provide support for setting a timestamp for a port. This timestamp is typically used to set the `pasynUser->timestamp` field that is passed to device support on read or callback operations. Device support uses the `pasynUser->timestamp` field to set the record `TIME` field. This will then be the record timestamp if the record `TSE` field is `-2`. `asynManager` provides a default timestamp source function which just calls `epicsTimeGetCurrent()`. However, `registerTimeStampSource` can be used to supply a different user-provided timestamp source function, for example one that calls `epicsTimeGetEvent()`, or some other site-specific timestamp source. `unregisterTimeStampSource` reverts to the default timestamp source in `pasynManager`.

- General purpose freelist service

Methods: `memMalloc`, `memFree`

These methods do not require an `asynUser`. They are provided for code that must continually allocate and free memory. Since `memFree` puts the memory on a free list instead of calling `free`, they are more efficient than `calloc/free` and also help prevent memory fragmentation.

- Interpose service

Method: `interposeInterface`

Code that calls `interposeInterface` implements an interface which is either not supported by a port driver or that is "interposed" between the caller and the port driver. For example `asynInterposeEos` interposes `asynOctet`. It performs end of string processing for port drivers that do not support it.

`interposeInterface` is recursive, i.e. an arbitrary number of interpose layers can exist above a single port, `addr`.

Multiple Device vs Single Device Port Drivers

When a low level driver calls `registerPort`, it declares if it handles multiple devices. This determines how the `addr` argument to `connectDevice` is handled and what `getAddr` returns.

- `multiDevice` false

The `addr` argument to `connectDevice` is ignored and `getAddr` always returns `-1`

- `multiDevice` true

asynDriver

If connectDevice is called with addr<0, the connection is to the port and getAddr always returns -1. If addr>=0, then the caller is connected to the device at the specified address. getAddr will return this address. An asynUser connected to the port can issue requests that affect all address on the port. For example disabling access to the port prevents access to all addresses on the port.

Connection Management

asynManager keeps track of the following states:

- connection

Is the port or device connected? This state is initialized to disconnected.

- enabled

Is the port or device enabled? This state is initialized to enabled.

- autoConnect

Does asynManager automatically attempt to connect if it finds the port or device disconnected? This is initialized to the state specified in the call to registerPort.

If the port does not support multiple devices, then port and device status are the same. If the port does support multiple devices, then asynManager keeps track of the states for the port and for every device connected to the port.

Whenever any of the states change for a port or device, then all users that previously called exceptionCallbackAdd for that port or device are called.

Low level drivers must call pasynManager:exceptionConnect whenever they connect to a port or port,addr and exceptionDisconnect whenever they disconnect.

Protecting a Thread from Blocking

The methods asynManager:report and asynCommon:report can be called by any thread, but the caller is blocked until the report finishes. lockPort, unlockPort, queueLockPort, queueUnlockPort, and most port methods may block. The other asynManager methods can be called by any thread including portThread. None of these methods block.

Unless stated otherwise the methods for other interfaces must only be called by processCallback or by calls between lockPort/unlockPort, or queueLockPort/queueUnlockPort.

Interface methods registerInterruptUser and cancelInterruptUser must never block. The registerInterruptUser callback must not block because it could be called by a non blocking driver.

portThread

If a driver calls asynManager:registerPort with the ASYN_CANBLOCK attributes bit set, then asynManager creates a thread for the port. Each portThread has its own set of queues for the calls to queueRequest. Four queues are maintained. One queue is used only for asynCommon:connect and asynCommon:disconnect requests. The other queues provide different priorities: low, medium, and high. queueRequests to any queue other than the connection queue will be rejected if the port is not connected. portThread runs forever implementing the

following algorithm:

1. Wait for work by calling `epicsEventMustWait`. Other code such as `queueRequest` call `epicsEventSignal`.
2. If the port is disabled, go back to 1.
3. For every element in queue, `asynQueuePriorityConnect`:
 - ◆ Removes the element from the queue.
 - ◆ Calls the user's callback
4. For each element of the queues `asynQueuePriorityHigh`, ..., `asynQueuePriorityLow`.
 - ◆ If disabled, skip this element.
 - ◆ If not connected and `autoConnect` is true for the device, then attempt to connect to the device.
 - ◆ If not connected, skip this element.
 - ◆ If blocked by another thread, skip this element.
 - ◆ If not blocked and user has requested blocking, then blocked.
 - ◆ Remove from queue and:
 - ◇ lock port
 - ◇ call user callback
 - ◇ unlock port

The actual code is more complicated because it unlocks before it calls code outside `asynManager`. This means that the queues can be modified and exceptions may occur.

Theory of Operation

Initialization

During initialization, port drivers register each communication port as well as all supported interfaces.

User code creates an `asynUser`, which is a "handle" for accessing `asynDriver` facilities, by calling

```
pasynManager->createAsynUser (processCallback, timeoutCallback);
```

An `asynUser` has the following features:

- An `asynUser` is the means by which `asynManager` manages multiple requests for accessing a port.
- `processCallback`, which is used by `queueRequest` described below, is the address of a user supplied callback routine.
- `timeoutCallback` is the address of caller supplied callback that will be called if a `queueRequest` remains on the queue too long.
- Device support code should create an `asynUser` for each "atomic" access to low level drivers, i.e. a set of calls that must not be interlaced with other calls to the low level drivers. For example device support for EPICS record support should create an `asynUser` for each record instance.
- Device support code should NOT try to share an `asynUser` between multiple sources of requests for access to a port. If this is done then device support must itself handle contention issues that are already handled by `asynManager`.

User code connects to a low level driver via a call to

```
status = pasynManager->connectDevice (pasynUser, portName, addr);
```


asynDriver

This call must specify the name of the port and the address of the device. It then calls `findInterface` to locate the interfaces with which it calls the driver. For example:

```
pasynInterface = pasynManager->findInterface(pasynUser, asynOctetType, 1);
```

Requesting access to a port

User code can request access to a port by two methods:

- `queueRequest` -

The `processCallback` passed to `createAsynUser` makes calls to the port interfaces.

- `lockPort/unlockPort`, `queueLockPort/queueUnlockPort` -

The caller can make calls to the port interfaces while the lock is held. These calls and calls to the port may block and thus should NOT be used by code that should not block, e.g. synchronous device support for EPICS records.

queueRequest - Flow of Control

User code requests access to a port by calling:

```
status = pasynManager->queueRequest(pasynUser, priority, timeout);
```

This results in either `processCallback` or `timeoutCallback` being called. Most requests to a port must be made from `processCallback`. `queueRequest` does not block. If `queueRequest` is called for a port that can block the request is queued to a thread dedicated to the port. If `queueRequest` is called for a port that does not block it just calls `processCallback`. The guarantee is valid only if low level drivers are only accessed by calling `queueRequest`, `lockPort/unlockPort`, and/or `queueLockPort/queueUnlockPort`.

The following examples are based on EPICS IOC record/device support.

The first example shows access to a port that can block.

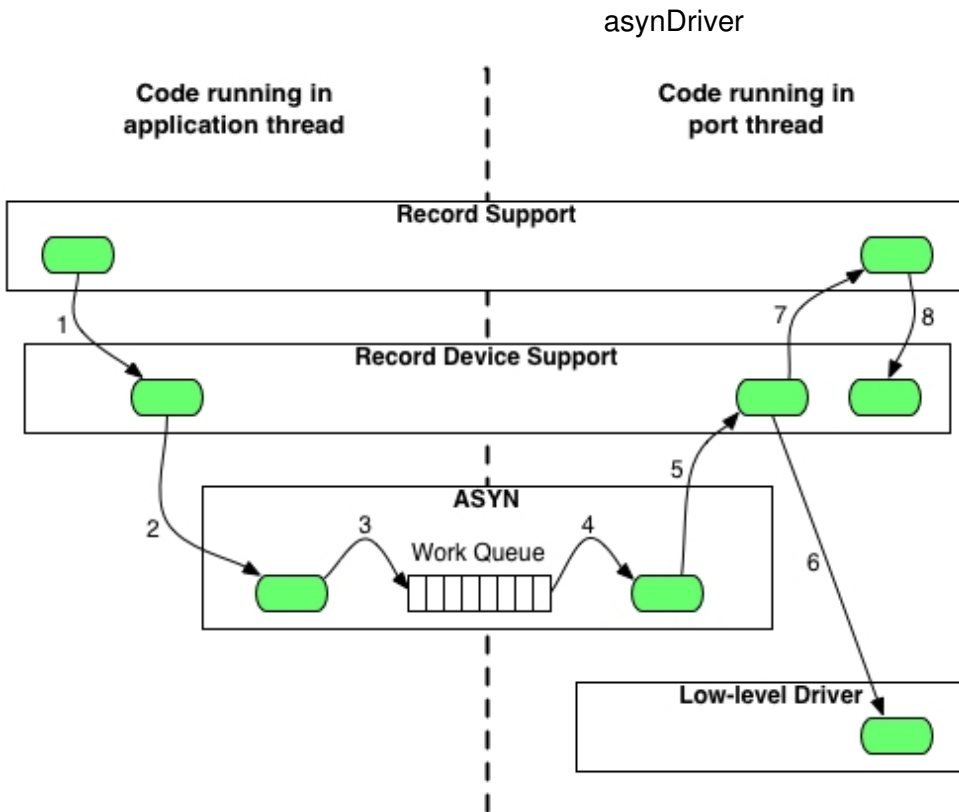


Figure 1: Asynchronous Control Flow

The sequence of record device support events that occurs starting with an application thread is pictured above in Figure 1, and explained below in the following steps:

1. Record processing calls device support with PACT 0 (Processing is not active).
2. Device support calls queueRequest.
3. queueRequest places the request on the driver work queue. The application thread is now able to go on and perform other operations. Subsequent operations for this I/O request are handled in the port driver thread.
4. The portThread removes the I/O request from the work queue.
5. The portThread calls the processCallback located in Record device support.
6. processCallback calls the low-level driver. The low-level driver read or write routine blocks until the I/O completes or until a timeout occurs. The low-level driver routine returns the results of the I/O operation to processCallback.
7. processCallback requests that the record be processed. NOTE: The process request will be made by one of the standard callback requests rather than the port thread.
8. Record support calls device support again, this time with PACT 1 (processing is active). Device support updates fields in the record and returns to record support which completes record processing.

The second example shows access to a port that cannot block.

asynDriver

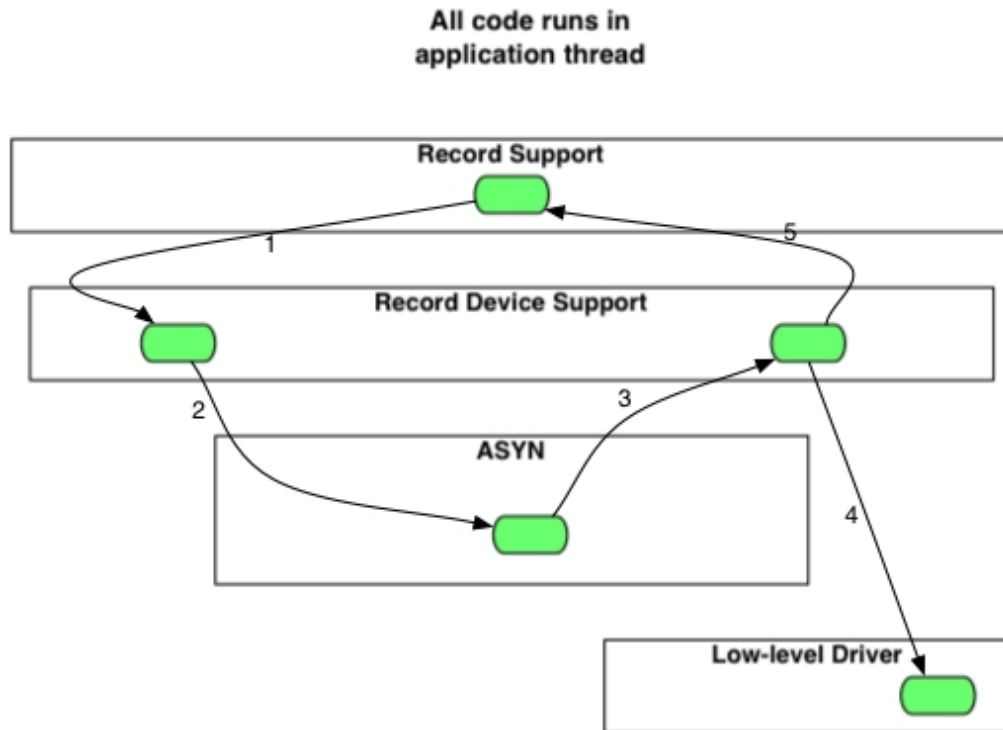


Figure 2: Synchronous Control Flow

The sequence of record device support events that occurs starting with an application thread is pictured above in Figure 2, and explained below in the following steps:

1. Record processing calls device support.
2. Device support calls `queueRequest`.
3. Since the port is synchronous, i.e. can not block, `queueRequest` locks the port and then calls the `processCallback`.
4. `processCallback` calls the low-level driver read or write routine. The low-level driver routine returns the results of the I/O operation to `processCallback`.
5. `processCallback` returns to `queueRequest`, which unlocks the port and returns to device support, which returns to record support, which completes record processing.

asynDriver Structures and Interfaces

`asynDriver.h` describes the following:

- `asynStatus` - An enum that describes the status returned by many methods.
- `asynException` - An enum that describes exceptions.
- `asynQueuePriority` - An enum that describes the queue priorities.
- `asynUser` - A structure that contains generic information and is the "handle" for calling most methods.
- `asynInterface` - a structure that describes an interface.
- `userCallback` - a typedef for the user process callback function described above.
- `exceptionCallback` - a typedef for a user callback to be called when exceptions occur.
- `timeStampCallback` - a typedef for a user callback function that will be called by `updateTimeStamp`.
- `asynManager` - An interface for communicating with `asynDriver`.
- `asynCommon` - An interface providing methods that must be implemented by all low level drivers.

asynDriver

- asynTrace - An interface plus associated functions and definitions that implement the trace facility.

asynStatus

Defines the status returned by most methods. If a method returns a status other than asynSuccess, and one of the arguments to the method is pasynUser, then the method is expected to write a message into pasynUser->errorMessage.

```
typedef enum {  
    asynSuccess, asynTimeout, asynOverflow, asynError, asynDisconnected, asynDisabled  
} asynStatus;
```

asynStatus

asynSuccess	The request was successful.
asynTimeout	The request failed with a timeout.
asynOverflow	The driver has lost input data. This can happen if an internal buffer or the user supplied buffer is too small. Whenever possible, low level drivers should be written so that the user can read input in small pieces.
asynError	Some other error occurred.
asynDisconnected	The request failed because the port is not connected.
asynDisabled	The request failed because the port or device is disabled.

asynException

Defines the exceptions for method exceptionOccurred

```
typedef enum {  
    asynExceptionConnect, asynExceptionEnable, asynExceptionAutoConnect,  
    asynExceptionTraceMask, asynExceptionTraceIOMask, asynExceptionTraceInfoMask,  
    asynExceptionTraceFile, asynExceptionTraceIOTruncateSize  
} asynException;
```

asynException

asynExceptionConnect	The connection state of the port or device has changed.
asynExceptionEnable	The enable state of the port or device has changed.
asynExceptionAutoConnect	The autoConnect state of the port or device has changed.
asynExceptionTraceMask	The traceMask for the port or device has changed.
asynExceptionTraceIOMask	The traceIOMask for the port or device has changed.
asynExceptionTraceInfoMask	The traceInfoMask for the port or device has changed.
asynExceptionTraceFile	The trace file for the port or device has changed.
asynExceptionTraceIOTruncateSize	The traceIOTruncateSize for the port or device has changed.

asynQueuePriority

This defines the priority passed to queueRequest.

```
typedef enum {  
    asynQueuePriorityLow, asynQueuePriorityMedium, asynQueuePriorityHigh,  
    asynQueuePriorityConnect
```


asynDriver

	<p>= 0.0 Perform any I/O that can be done without blocking. Return timeout error if no I/O can be done without blocking.</p> <p>< 0.0 Infinite timeout. Wait forever for I/O to complete.</p>
userPvt	<p>For use by the user. The user should set this immediately after the call to pasynManager->createAsynUser.</p> <p>If this is changed while asynUser is queued, the results are undefined, e.g. it could cause a crash.</p>
userData	Also for use by the user.
drvUser	A driver can use this to hold asynUser specific data. The asynDrvUser interface is used for communication between asynUser and the driver.
reason	<p>Drivers and asynUsers can use this as a general purpose field. By convention it is used to determine what "command" is being sent over a particular interface. For example an A/D driver implementing the asynInt32 interface might define reason=0 to mean "return the A/D conversion", while reason=1 might mean "return the amplifier gain". Typically drivers implement the asynDrvUser interface, and use this to convert from descriptive strings for commands (e.g. "DATA" or "GAIN" in this example) to the enum "reason". A driver that is calling an interrupt users often uses reason to decide if the users callback should be called. Values of reason less than 0 are reserved for standard meanings. For example ASYN_REASON_SIGNAL is used to mean "out of band" request. The devGpib support uses this to report SRQs.</p>
timestamp	Devices which provide their own time stamps use this field to provide the time value for records whose TSE field is set to "-2".
auxStatus	Any method can provide additional return information in auxStatus. The meaning is determined by the method. Callbacks use auxStatus to set record alarm status in device support callback functions.

asynInterface

This defines an interface registered with asynPortManager:registerPort or asynManager:interposeInterface.

```
typedef struct asynInterface{
    const char *interfaceType; /*For example, asynCommonType */
    void *pinterface;         /*For example, pasynCommon */
    void *drvPvt;
}asynInterface;
```

asynInterface

interfaceType	A character string describing the interface.
pinterface	A pointer to the interface. The user must cast this to the correct type.
drvPvt	For the exclusive use of the code that called registerPort or interposeInterface.

asynManager

This is the main interface for communicating with asynDriver.

```
/*registerPort attributes*/
#define ASYN_MULTIDEVICE 0x0001
#define ASYN_CANBLOCK 0x0002
```

asynDriver

```
/*standard values for asynUser.reason*/
#define ASYN_REASON_SIGNAL -1

typedef struct interruptNode{
    ELLNODE node;
    void *drvPvt;
}interruptNode;

typedef void (*userCallback)(asynUser *pasynUser);
typedef void (*exceptionCallback)(asynUser *pasynUser,asynException exception);
typedef void (*timeStampCallback)(void *userPvt, epicsTimeStamp *pTimeStamp);

typedef struct asynManager {
    void (*report)(FILE *fp,int details,const char*portName);
    asynUser *(*createAsynUser)(userCallback process,userCallback timeout);
    asynUser *(*duplicateAsynUser)(asynUser *pasynUser,
        userCallback queue,userCallback timeout);
    asynStatus (*freeAsynUser)(asynUser *pasynUser);
    void *(*memMalloc)(size_t size);
    void (*memFree)(void *pmem,size_t size);
    asynStatus (*isMultiDevice)(asynUser *pasynUser,
        const char *portName,int *yesNo);
    /* addr = (-1,>=0) => connect to (port,device) */
    asynStatus (*connectDevice)(asynUser *pasynUser,
        const char *portName,int addr);
    asynStatus (*disconnect)(asynUser *pasynUser);
    asynStatus (*exceptionCallbackAdd)(asynUser *pasynUser,
        exceptionCallback callback);
    asynStatus (*exceptionCallbackRemove)(asynUser *pasynUser);
    asynInterface *(*findInterface)(asynUser *pasynUser,
        const char *interfaceType,int interposeInterfaceOK);
    asynStatus (*queueRequest)(asynUser *pasynUser,
        asynQueuePriority priority,double timeout);
    asynStatus (*cancelRequest)(asynUser *pasynUser,int *wasQueued);
    asynStatus (*blockProcessCallback)(asynUser *pasynUser, int allDevices);
    asynStatus (*unblockProcessCallback)(asynUser *pasynUser, int allDevices);
    asynStatus (*lockPort)(asynUser *pasynUser);
    asynStatus (*unlockPort)(asynUser *pasynUser);
    asynStatus (*queueLockPort)(asynUser *pasynUser);
    asynStatus (*queueUnlockPort)(asynUser *pasynUser);
    asynStatus (*canBlock)(asynUser *pasynUser,int *yesNo);
    asynStatus (*getAddr)(asynUser *pasynUser,int *addr);
    asynStatus (*getPortName)(asynUser *pasynUser,const char **ppportName);
    /* drivers call the following*/
    asynStatus (*registerPort)(const char *portName,
        int attributes,int autoConnect,
        unsigned int priority,unsigned int stackSize);
    asynStatus (*registerInterface)(const char *portName,
        asynInterface *pasynInterface);
    asynStatus (*exceptionConnect)(asynUser *pasynUser);
    asynStatus (*exceptionDisconnect)(asynUser *pasynUser);
    /*any code can call the following*/
    asynStatus (*interposeInterface)(const char *portName, int addr,
        asynInterface *pasynInterface,
        asynInterface **ppPrev);
    asynStatus (*enable)(asynUser *pasynUser,int yesNo);
    asynStatus (*autoConnect)(asynUser *pasynUser,int yesNo);
    asynStatus (*isConnected)(asynUser *pasynUser,int *yesNo);
    asynStatus (*isEnabled)(asynUser *pasynUser,int *yesNo);
    asynStatus (*isAutoConnect)(asynUser *pasynUser,int *yesNo);
    asynStatus (*setAutoConnectTimeout)(double timeout);
    asynStatus (*waitConnect)(asynUser *pasynUser, double timeout);
```

asynDriver

```

/*The following are methods for interrupts*/
asynStatus (*registerInterruptSource)(const char *portName,
                                     asynInterface *pasynInterface, void **pasynPvt);
asynStatus (*getInterruptPvt)(asynUser *pasynUser,
                              const char *interfaceType, void **pasynPvt);
interruptNode *(*createInterruptNode)(void *pasynPvt);
asynStatus (*freeInterruptNode)(asynUser *pasynUser, interruptNode *pnode);
asynStatus (*addInterruptUser)(asynUser *pasynUser,
                               interruptNode *pinterruptNode);
asynStatus (*removeInterruptUser)(asynUser *pasynUser,
                                  interruptNode *pinterruptNode);
asynStatus (*interruptStart)(void *pasynPvt, ELLLIST **plist);
asynStatus (*interruptEnd)(void *pasynPvt);
/* Time stamp functions */
asynStatus (*registerTimeStampSource)(asynUser *pasynUser, void *userPvt, timeStampCallback callback);
asynStatus (*unregisterTimeStampSource)(asynUser *pasynUser);
asynStatus (*updateTimeStamp)(asynUser *pasynUser);
asynStatus (*getTimeStamp)(asynUser *pasynUser, epicsTimeStamp *pTimeStamp);
asynStatus (*setTimeStamp)(asynUser *pasynUser, const epicsTimeStamp *pTimeStamp);

const char *(*strStatus)(asynStatus status);
}asynManager;
epicsShareExtern asynManager *pasynManager;

```

asynManager

report	Reports status about the asynPortManager. If portName is non-NULL it reports for a specific port. If portName is NULL then it reports for each registered port. It also calls asynCommon:report for each port being reported.
createAsynUser	Creates an asynUser. The caller specifies two callbacks, process and timeout. These callback are only called as a result of a queueRequest. The timeout callback is optional. errorMessageSize characters are allocated for errorMessage. The amount of storage can not be changed. This method doesn't return if it is unable to allocate the storage.
duplicateAsynUser	Creates an asynUser by calling createAsynUser. It then initializes the new asynUser as follows: The fields timeout, userPvt, userData, and drvUser are initialized with values taken from pasynUser. Its connectDevice state is the same as that for pasynUser.
freeAsynUser	Free an asynUser. The user must free an asynUser only via this call. If the asynUser is connected to a port, asynManager:disconnect is called. If the disconnect fails, this call will also fail. The storage for the asynUser is saved on a free list and will be reused in later calls to createAsynUser or duplicateAsynUser. Thus continually calling createAsynUser (or duplicateAsynUser) and freeAsynUser is efficient.
memMalloc memFree	Allocate/Free memory. memMalloc/memFree maintain a set of freelists of different sizes. Thus any application that needs storage for a short time can use memMalloc/memFree to allocate and free the storage without causing memory fragmentation. The size passed to memFree MUST be the same as the value specified in the call to memMalloc.
isMultiDevice	Answers the question "Does the port support multiple devices?" This method can be called before calling connectDevice.
connectDevice	Connect the asynUser structure to a device specified by portName, addr. The port Name is the same as that specified in a call to registerPort. The call will

asynDriver

	<p>fail if the asynUser is already connected to a device. If the port does not support multiple devices, than addr is ignored. connectDevice only connects the asynUser to the port driver for the portName,addr. The port driver may or may not be connected to the actual device. Thus, connectDevice and asynCommon:connect are completely different.</p> <p>See the Theory of Operation section for a description of the difference between single and multi-device port drivers.</p>
disconnect	<p>Disconnect the asynUser from the port,addr to which it is connected via a previous call to connectDevice. The call will fail if the asynUser is queued or locked, or has a callback registered via exceptionCallbackAdd. Note that asynManager:disconnect and asynCommon:disconnect are completely different.</p>
exceptionCallbackAdd	<p>Callback will be called whenever one of the exceptions defined by asynException occurs. The callback can call isConnected, isEnabled, or isAutoConnect to find the connection state. asynTrace provides methods to find out the current trace settings.</p>
exceptionCallbackRemove	<p>Callback is removed. This must be called before disconnect.</p>
findInterface	<p>Find a driver interface. If interposeInterfaceOK is true, then findInterface returns the last interface registered or interposed. Otherwise, the interface registered by registerPort is returned. It returns 0 if the interfaceType is not supported.</p> <p>The user needs the address of the driver's interface and of pdrvPvt so that calls can be made to the driver. For example:</p> <pre> asynInterface *pasynInterface; asynOctet *pasynOctet; void *pasynOctetPvt; ... pasynInterface = pasynManager->findInterface(pasynUser, asynOctetType, 1); if(!pasynInterface) { /*error do something*/} pasynOctet = (asynOctet *)pasynInterface->pinterface; pasynOctetPvt = pasynInterface->pdrvPvt; ... /* The following call must be made from a callback */ pasynOctet->read(pasynOctetPvt, pasynUser, ... </pre>
queueRequest	<p>When registerPort is called, the caller must specify if it can block, i.e. attribute bit ASYN_CANBLOCK is set or cleared. If the port has been registered with ASYN_CANBLOCK true then the request is put on a queue for the thread associated with the queue. If the port has been registered with ASYN_CANBLOCK false then queueRequest locks the port and calls the process callback. In either case the process callback specified in the call to createAsynUser is called.</p> <p>If the asynUser is already on a queue, asynError is returned. The timeout starts when the request is queued. A value less than or equal to 0.0 means no timeout. The request is removed from the queue before the callback is called. Callbacks are allowed to make requests to asynManager such as queueRequest, blockProcessCallback, etc. It is even permissible to call</p>

asynDriver

	<p>freeAsynUser from a callback but the request will be delayed until after the callback completes.</p> <p>The priority asynQueuePriorityConnect must be used for asynCommon:connect and asynCommon:disconnect calls, and must NOT be used for any other calls.</p> <p>If a timeout callback was not passed to createAsynUser and a queueRequest with a non-zero timeout is requested, the request fails.</p> <p>Attempts to queue a request other than a connection request to a disconnected port will fail unless the reason is ASYN_REASON_QUEUE_EVEN_IF_NOT_CONNECTED.</p>
cancelRequest	<p>If a asynUser is queued, remove it from the queue. If either the process or timeout callback is active when cancelRequest is called than cancelRequest will not return until the callback completes.</p>
blockProcessCallback unblockProcessCallback	<p>blockProcessCallback is a request to prevent access to a device or port by other asynUsers between queueRequests. blockProcessCallback can be called from a processCallback or when the asynUser has no request queued. When called from processCallback blocking starts immediately, otherwise blocking starts the next time processCallback is called. Blocking means that no other asynUser's processCallback will be called until unblockProcessCallback is called. Note the following restrictions for blockProcessCallback:</p> <ul style="list-style-type: none"> • blockProcessCallback only works with drivers that can block and an error is returned if it is called for non-blocking drivers. • queueRequests that specify a priority of asynQueuePriorityConnect are not blocked. <p>It is permissible to simultaneously block allDevices and also the device to which the asynUser is connected.</p>
lockPort/unlockPort	<p>Lock access to a port driver. This is used by code that is willing to block while making calls to a port driver. The code can call lockPort, make an arbitrary number of calls to the port driver, and than call unlockPort. Other code that calls queueRequest and/or lockPort will be delayed between the calls to lockPort and unlockPort.</p>
queueLockPort/queueUnlockPort	<p>Lock access to a port driver. This is used by code that is willing to block while making calls to a port driver. The code can call lockPort, make an arbitrary number of calls to the port driver, and than call unlockPort. Other code that calls queueRequest and/or lockPort will be delayed between the calls to lockPort and unlockPort. The difference between lockPort and queueLockPort is that queueLockPort queues a request to lock the port, using the same queues as queueRequest. This means that a thread that repeatedly calls queueLockPort without sleeping between calls will still allow other threads to access the port. This is not true with lockPort, which will take a mutex as soon as the port is free, and can prevent other threads from accessing the port at all.</p>
canBlock	<p>yesNo is set to (0,1), i.e. (false,true) if calls to the low level driver can block. The value is determined by the attributes passed to registerPort.</p>
getAddr	

asynDriver

	<p>*addr is set equal to the address which the user specified in the call to connectDevice or -1 if the port does not support multiple devices.</p> <p>See the Theory of Operation section for a description of the difference between single and multi-device port drivers.</p>
getPortName	*pportName is set equal to the name of the port to which the user is connected.
registerPort	<p>This method is called by drivers. A call is made for each port instance. Attributes is a set of bits. Currently two bits are defined: ASYN_MULTIDEVICE and ASYN_CANBLOCK. The driver must specify these properly. autoConnect, which is (0,1) for (no,yes), provides the initial value for the port and all devices connected to the port. priority and stacksize are only relevant if ASYN_CANBLOCK=1, in which case asynManager uses these values when it creates the port thread with epicsThreadCreate(). If priority is 0, then the default value epicsThreadPriorityMedium will be assigned. If stackSize is 0, the default value of epicsThreadGetStackSize(epicsThreadStackMedium) will be assigned. The portName argument specifies the name by which the upper levels of the asyn code will refer to this communication interface instance. The registerPort method makes an internal copy of the string to which the name argument points.</p>
registerInterface	<p>This is called by port drivers for each supported interface. This method <i>does not</i> make a copy of the asynInterface to which the pasynInterface argument points. Callers must store the asynInterface in a location which is retained for the lifetime of the port. This is commonly done by placing the asynInterface structure in the 'driver private' structure.</p>
exceptionConnect	This method must be called by the driver when and only when it connects to a port or device.
exceptionDisconnect	This method must be called by the driver when and only when it disconnects from a port or device.
interposeInterface	<p>This is called by a software layer between client code and the port driver. For example, if a device echos writes then a software module that issues a read after each write could be created and call interposeInterface for interface asynOctet.</p> <p>Multiple interposeInterface calls for a port/addr/interface can be issued. *ppPrev is set to the address of the previous asynInterface. Thus the software module that last called interposeInterface is called by user code. It in turn can call the software module that was the second to last to call interposeInterface. This continues until the actual port driver is called.</p> <p>interposeInterface can also be called with an asynInterface that has not been previously registered or replaced. In this case *ppPrev will be null. Thus, new interfaces that are unknown to the low level driver can be implemented.</p>
enable	If enable is set yes, then queueRequests are not dequeued unless their queue timeout occurs.
autoConnect	If autoConnect is true and the port or device is not connected when a user callback is scheduled to be called, asynManager calls pasynCommon->connect. See the discussion of Flow of Control below for

asynDriver

	details.
isConnected	*yesNo is set to (0,1) if the port or device (is not, is) connected.
isEnabled	*yesNo is set to (0,1) if the port or device (is not, is) enabled.
isAutoConnect	*yesNo is set to (0,1) if the portThread (will not, will) autoConnect for the port or device.
setAutoConnectTimeout	Changes the timeout when waiting for the initial connection callback from port drivers. This callback occurs in response to asynManager queuing a connection request, which happens when the port driver registers its asynCommon interface. The default timeout is 0.5 seconds.
waitConnect	Wait for up to timeout seconds for the port/device to connect.
registerInterruptSource	If a low level driver supports interrupts it must call this for each interface that supports interrupts. pasynPvt must be the address of a void * that will be given a value by registerInterruptSource. This argument is passed interruptStart and interruptEnd.
getInterruptPvt	Any code that wants to call createInterruptNode but does not know the address of pasynPvt can find it via this method. The caller must be connected to a device, i.e. must have called connectDevice. If the caller is not connected, getInterruptPvt returns asynError.
createInterruptNode freeInterruptNode	These methods are the only way a user can allocate and free an interruptNode. pasynPvt is the value obtained from getInterruptPvt. createInterruptNode/freeInterruptNode are separate methods rather than being done automatically by addInterruptUser/removeInterruptUser so that addInterruptUser/removeInterruptUser can be efficient.
addInterruptUser removeInterruptUser	Code that implements registerInterruptUser/cancelInterruptUser must call addInterruptUser/removeInterruptUser to add and remove users from the list or else calls to interruptStart/interruptEnd will not work. This is an efficient operation so that a user can repeatedly call registerInterruptUser/cancelInterruptUser. If either of these is called while a interrupt is being processed, i.e. between calls to interruptStart/interruptEnd, the call will block until interruptEnd is called. The process callback for the asynUser specified in the call to addInterruptUser must not call removeInterruptUser or it will block forever.
interruptStart interruptEnd	The code that implements interrupts is interface dependent. The only service asynManager provides is a thread-safe implementation of the user list. When the code wants to call the callback specified in the calls to registerInterruptUser, it calls interruptStart to obtain the list of callbacks. When it is done it calls interruptEnd. If any requests are made to addInterruptUser/removeInterruptUser between the calls to interruptStart and interruptEnd, asynManager delays the requests until interruptEnd is called.
registerTimeStampSource	Registers a user-defined time stamp callback function.
unregisterTimeStampSource	Unregisters any user-defined timestamp callback function and reverts to the default timestamp source function in asynManager, which simply calls epicsTimeGetCurrent().
updateTimeStamp	Set the current time stamp for this port by calling either the default timestamp source, or a user-defined timestamp source that was registered with registerTimeStampSource.
getTimeStamp	Get the current time stamp for this port that was returned by the most recent

asynDriver

	call to updateTimeStamp.
setTimeStamp	Set the current time stamp for this port directly from the timestamp value passed to this function.
strStatus	Returns a descriptive string corresponding to the asynStatus value.

asynCommon

asynCommon describes the methods that must be implemented by drivers.

```
/* Device Interface supported by ALL asyn drivers*/
#define asynCommonType "asynCommon"
typedef struct asynCommon {
    void (*report)(void *drvPvt, FILE *fp, int details);
    /*following are to connect/disconnect to/from hardware*/
    asynStatus (*connect)(void *drvPvt, asynUser *pasynUser);
    asynStatus (*disconnect)(void *drvPvt, asynUser *pasynUser);
}asynCommon;
```

asynCommon

report	Generates a report about the hardware device. This is the only asynCommon method that does not have to be called by the queueRequest callback or between calls to lockPort/unlockPort.
connect	Connect to the hardware device or communication path. The queueRequest must specify priority asynQueuePriorityConnect.
disconnect	Disconnect from the hardware device or communication path. The queueRequest must specify priority asynQueuePriorityConnect.

asynCommonSyncIO

asynCommonSyncIO provides a convenient interface for software that needs to perform "synchronous" operations to an asyn device, i.e. that blocks while waiting for the port to be available and for the operation to complete. The code does not need to handle callbacks or understand the details of the asynManager and asynCommon interfaces.

```
typedef struct asynCommonSyncIO {
    asynStatus (*connect)(const char *port, int addr,
                          asynUser **ppasynUser, const char *drvInfo);
    asynStatus (*disconnect)(asynUser *pasynUser);
    asynStatus (*connectDevice)(asynUser *pasynUser);
    asynStatus (*disconnectDevice)(asynUser *pasynUser);
    asynStatus (*report)(asynUser *pasynUser, FILE *fd, int details);
} asynCommonSyncIO;
epicsShareExtern asynCommonSyncIO *pasynCommonSyncIO;
```

Note that there is a potential for confusion in the connect* and disconnect* function names of this interface. For consistency with the other SyncIO interfaces, connect calls pasynManager->connectDevice, disconnect calls pasynManager->disconnect, connectDevice calls asynCommon->connect, and disconnectDevice calls asynCommon->disconnect.

asynDrvUser

asynDrvUser provides methods that allow an asynUser to communicate user specific information to/from a port driver

```
#define asynDrvUserType "asynDrvUser"
```

asynCommon

asynDriver

```
typedef struct asynDrvUser {
    /*The following do not have to be called via queueRequest callback*/
    asynStatus (*create)(void *drvPvt, asynUser *pasynUser,
        const char *drvInfo, const char **pptypeName, size_t *psize);
    asynStatus (*getType)(void *drvPvt, asynUser *pasynUser,
        const char **pptypeName, size_t *psize);
    asynStatus (*destroy)(void *drvPvt, asynUser *pasynUser);
}asynDrvUser;
```

asynDrvUser

create	The user, i.e. device support calls create. The driver can create any resources it needs. It can use pasynUser->drvUser to provide access to the resources. If the asynUser and the driver both know how to access the resources they must agree about the name for the resource and a size. If pptypeName is not null the driver can give a value to *pptypeName. If psize is not null the driver can give a value to *psize. Unless asynUser receives a typeName and size that it recognizes it must not access asynUser.drvUser.
getType	If other code, e.g. an interposeInterface wants to access asynUser.drvUser it must call this and verify that typeName and size are what it expects.
destroy	Destroy the resources created by create and set asynUser.drvUser null.

asynLockPortNotify

This is provided for port drivers that are an asynUser of another port driver. For example a serial bus driver can be implemented by connecting to a standard serial port to perform the actual I/O. When the serial bus port is locked, either by the requester calling lockPort or because a queueRequest was dequeued, then the serial bus driver needs to lock the associated serial port.

The serial bus driver registers interface asynLockPortNotify. Whenever the serial bus port is locked, asynManager calls pasynLockPortNotify.lock. The serial bus driver calls asynManager.lockPort for the serial port to which it is connected. Similarly for unlockPort. Thus while the serial bus port is locked, the serial bus is also locked.

asynLockPortNotify is used only by asynManager itself. It is not put in the list of interfaces for the port.

asynLockPortNotify is:

```
#define asynLockPortNotifyType "asynLockPortNotify"
typedef struct asynLockPortNotify {
    asynStatus (*lock)(void *drvPvt, asynUser *pasynUser);
    asynStatus (*unlock)(void *drvPvt, asynUser *pasynUser);
}asynLockPortNotify;
```

asynLockPortNotify

lock	Called when asynManager.lockPort is called. The driver normally calls asynManager.lockPort for the port to which it is connected.
unlock	Called when asynManager.unlockPort is called. The driver normally calls asynManager.unlockPort for the port to which it is connected.

asynOption

asynOption provides a generic way of setting driver specific options. For example the serial port driver uses this to specify baud rate, stop bits, etc.

asynDriver

```
#define asynOptionType "asynOption"
/*The following are generic methods to set/get device options*/
typedef struct asynOption {
    asynStatus (*setOption)(void *drvPvt, asynUser *pasynUser,
                           const char *key, const char *val);
    asynStatus (*getOption)(void *drvPvt, asynUser *pasynUser,
                           const char *key, char *val, int sizeval);
}asynOption;
```

asynOption

setOption	Set value associated with key.
getOption	Get value associated with key.

Trace Interface

```
/*asynTrace is implemented by asynManager*/
/*All asynTrace methods can be called from any thread*/
/* traceMask definitions*/
#define ASYN_TRACE_ERROR      0x0001
#define ASYN_TRACEIO_DEVICE  0x0002
#define ASYN_TRACEIO_FILTER  0x0004
#define ASYN_TRACEIO_DRIVER  0x0008
#define ASYN_TRACE_FLOW      0x0010
#define ASYN_TRACE_WARNING   0x0020

/* traceIO mask definitions*/
#define ASYN_TRACEIO_NODATA  0x0000
#define ASYN_TRACEIO_ASCII  0x0001
#define ASYN_TRACEIO_ESCAPE  0x0002
#define ASYN_TRACEIO_HEX     0x0004

/* traceInfo mask definitions*/
#define ASYN_TRACEINFO_TIME  0x0001
#define ASYN_TRACEINFO_PORT  0x0002
#define ASYN_TRACEINFO_SOURCE 0x0004
#define ASYN_TRACEINFO_THREAD 0x0008

/* asynPrint and asynPrintIO are macros that act like
   int asynPrintSource(asynUser *pasynUser,int reason, __FILE__, __LINE__, const char *format, ... )
   int asynPrintIOSource(asynUser *pasynUser,int reason,
                        const char *buffer, size_t len, __FILE__, __LINE__, const char *format, ... );
*/
typedef struct asynTrace {
    /* lock/unlock are only necessary if caller performs I/O other than */
    /* by calling asynTrace methods */
    asynStatus (*lock)(asynUser *pasynUser);
    asynStatus (*unlock)(asynUser *pasynUser);
    asynStatus (*setTraceMask)(asynUser *pasynUser,int mask);
    int (*getTraceMask)(asynUser *pasynUser);
    asynStatus (*setTraceIOMask)(asynUser *pasynUser,int mask);
    int (*getTraceIOMask)(asynUser *pasynUser);
    asynStatus (*setTraceInfoMask)(asynUser *pasynUser,int mask);
    int (*getTraceInfoMask)(asynUser *pasynUser);
    asynStatus (*setTraceFile)(asynUser *pasynUser,FILE *fp);
    FILE (*getTraceFile)(asynUser *pasynUser);
    asynStatus (*setTraceIOTruncateSize)(asynUser *pasynUser,size_t size);
    size_t (*getTraceIOTruncateSize)(asynUser *pasynUser);
#if defined(__GNUC__) && (__GNUC__ <3)
    /* GCC 2.95 does not allow EPICS_PRINTF_STYLE on function pointers */
    int (*print)(asynUser *pasynUser,int reason, const char *pformat, ...);
#endif
};
```

asynDriver

```
int      (*printSource)(asynUser *pasynUser,int reason, const char *fileName, int line, const char *p
int      (*vprint)(asynUser *pasynUser,int reason, const char *pformat, va_list pvar);
int      (*vprintSource)(asynUser *pasynUser,int reason, const char *file, int line, const char *pfor
int      (*printIO)(asynUser *pasynUser,int reason,
          const char *buffer, size_t len,const char *pformat, ...);
int      (*printIOSource)(asynUser *pasynUser,int reason,
          const char *buffer, size_t len,const char *file, int line, const char *pformat, ...);
int      (*vprintIO)(asynUser *pasynUser,int reason,
          const char *buffer, size_t len,const char *pformat, va_list pvar);
int      (*vprintIOSource)(asynUser *pasynUser,int reason,
          const char *buffer, size_t len,const char *file, int line, const char *pformat, va_list
#else
int      (*print)(asynUser *pasynUser,int reason, const char *pformat, ...) EPICS_PRINTF_STYLE(3,4);
int      (*printSource)(asynUser *pasynUser,int reason, const char *fileName, int line, const char *p
int      (*vprint)(asynUser *pasynUser,int reason, const char *pformat, va_list pvar) EPICS_PRINTF_ST
int      (*vprintSource)(asynUser *pasynUser,int reason, const char *file, int line, const char *pfor
int      (*printIO)(asynUser *pasynUser,int reason,
          const char *buffer, size_t len,const char *pformat, ...) EPICS_PRINTF_STYLE(5,6);
int      (*printIOSource)(asynUser *pasynUser,int reason,
          const char *buffer, size_t len,const char *file, int line, const char *pformat, ...) EP
int      (*vprintIO)(asynUser *pasynUser,int reason,
          const char *buffer, size_t len,const char *pformat, va_list pvar) EPICS_PRINTF_STYLE(5,
int      (*vprintIOSource)(asynUser *pasynUser,int reason,
          const char *buffer, size_t len,const char *file, int line, const char *pformat, va_list
#endif
}asynTrace;
epicsShareExtern asynTrace *pasynTrace;
```

asynTrace

asynDriver provides a trace facility with the following attributes:

- Tracing is turned on/off for individual devices, i.e. a portName, addr.
- Trace has a global trace mask for asynUsers not connected to a port or port, addr.
- The output is sent to a file or to stdout or to errlog.
- A mask determines the type of information that can be displayed. The various choices can be ORed together.
 - ◆ ASYN_TRACE_ERROR Run time errors are reported, e.g. timeouts.
 - ◆ ASYN_TRACEIO_DEVICE Device support reports I/O activity.
 - ◆ ASYN_TRACEIO_FILTER Any layer between device support and the low level driver reports any filtering it does on I/O.
 - ◆ ASYN_TRACEIO_DRIVER Low level driver reports I/O activity.
 - ◆ ASYN_TRACE_FLOW Report logic flow. Device support should report all queue requests, callbacks entered, and all calls to drivers. Layers between device support and low level drivers should report all calls they make to lower level drivers. Low level drivers report calls they make to other support.
 - ◆ ASYN_TRACE_WARNING Report warnings, i.e. conditions that are between ASYN_TRACE_ERROR and ASYN_TRACE_FLOW.
- Another mask determines how message buffers are printed. The various choices can be ORed together.
 - ◆ ASYN_TRACEIO_NODATA Don't print any data from the message buffers.
 - ◆ ASYN_TRACEIO_ASCII Print with a "%s" style format.
 - ◆ ASYN_TRACEIO_ESCAPE Call epicsStrPrintEscaped.
 - ◆ ASYN_TRACEIO_HEX Print each byte with " %2.2x".
- Another mask determines what information is printed at the beginning of each message. The various choices can be ORed together.

asynDriver

- ◆ ASYN_TRACEINFO_TIME prints the date and time of the message.
- ◆ ASYN_TRACEINFO_PORT prints [port,addr,reason], where port is the port name, addr is the asyn address, and reason is pasynUser->reason. These are the 3 pieces of "addressing" information in asyn.
- ◆ ASYN_TRACEINFO_SOURCE prints the file name and line number, i.e. [__FILE__,__LINE__] where the asynPrint or asynPrintIO statement occurs.
- ◆ ASYN_TRACEINFO_THREAD prints the thread name, thread ID and thread priority, i.e. [epicsThreadGetNameSelf(), epicsThreadGetIdSelf(), epicsThreadGetPrioritySelf()].

In order for the trace facility to perform properly; device support and all drivers must use the trace facility. Device and driver support can directly call the asynTrace methods. The asynPrint and asynPrintIO macros are provided so that it is easier for device/driver support. Support can have calls like:

```
asynPrint(pasynUser,ASYN_TRACE_FLOW,"%s Calling queueRequest\n",
         someName);
```

The asynPrintIO call is designed for device support or drivers that issue read or write requests. They make calls like:

```
asynPrintIO(pasynUser,ASYN_TRACEIO_DRIVER,data,nchars,"%s nchars %d",
            someName,nchars);
```

The asynTrace methods are implemented by asynManager. These methods can be used by any code that has created an asynUser and is connected to a device. All methods can be called by any thread. That is, an application thread and/or a portThread. If a thread performs all I/O via calls to print or printIO, then it does not have to call lock or unlock. If it does want to do its own I/O, it must lock before any I/O and unlock after. For example:

```
pasynTrace->lock(pasynUser);
fd = pasynTrace->getTraceFile(pasynUser);
/*perform I/O to fd */
pasynTrace->unlock(pasynUser);
```

If the asynUser is not connected to a port, i.e. pasynManager->connectDevice has not been called, then a "global" device is assumed. This is useful when asynPrint is called before connectDevice.

asynTrace

lock/unlock	These are only needed for code that call asynTrace.print or asynTrace.printIO instead of asynPrint and asynPrintIO. print, and printIO both lock while performing their operations. The get methods do not lock (except for getTraceFile) and they are safe. Except for setTraceFile the set methods do not block, since worst that can happen is that the user gets a little more or a little less output.
setTraceMask	Set the trace mask. Normally set by the user requesting it via a shell command or the devTrace device support. Setting the trace mask for a port also sets the trace mask for all devices connected to that port
getTraceMask	Get the trace mask. Device support that wants to issue trace messages calls this to see what trace options have been requested.
setTraceIOMask	

asynDriver

	Set the traceIO mask. Normally set by the user requesting it via a shell command or the devTrace device support. Setting the traceIO mask for a port also sets the traceIO mask for all devices connected to that port
getTraceIOMask	Get the traceIO mask. Support that wants to issue its own IO messages instead of calling asynPrintIO should call this and honor the mask settings. Most code will not need it.
setTraceInfoMask	Set the traceInfo mask. Normally set by the user requesting it via a shell command or the devTrace device support. Setting the traceInfo mask for a port also sets the traceInfo mask for all devices connected to that port
getTraceInfoMask	Get the traceInfo mask. Support that wants to issue its own IO messages instead of calling asynPrint should call this and honor the mask settings. Most code will not need it.
setTraceFile	Set the stream to use for output. A NULL argument means use errlog. Normally set by the user requesting it via a shell command or by the devTrace device support. If the current output stream is none of (NULL, stdout, stderr) then the current output stream is closed before the new stream is used.
getTraceFile	Get the file descriptor to use for output. Device support that wants to issue its own IO messages instead of calling asynPrintIO should call this and honor the mask settings. In this case, lock must have been called first. Most code will not need it. If the return value is 0, then output should be directed to errlog.
setTraceIOTruncateSize	Determines how much data is printed by printIO. In all cases it determines how many bytes of the buffer are displayed. The actual number of characters printed depends on the traceIO mask. For example ASYN_TRACEIO_HEX results in 3 characters being printed for each byte. Normally set by the user requesting it via a shell command or the devTrace device support.
getTraceIOTruncateSize	Get the current truncate size. Called by asynPrintIO. Code that does its own I/O should also support the traceIO mask.
print	If reason ORed with the current traceMask is not zero, then the message is printed. This method is provided for backwards compatibility. The asynPrint macro now calls printSource().
printSource	If reason ORed with the current traceMask is not zero, then the message is printed. Most code should call asynPrint instead of calling this method. This method is the same as print() but with the additional file and line arguments.
vprint	This is the same as print, but using a va_list as its final argument.
vprintSource	This is the same as printSource, but using a va_list as its final argument.
printIO	If reason ORed with the current traceMask is not zero then the message is printed. If len is >0, then the buffer is printed using the traceIO mask and getTraceIOTruncateSize. This method is provided for backwards compatibility. The asynPrintIO macro now calls printIOSource().
printIOSource	If reason ORed with the current traceMask is not zero then the message is printed. If len is >0, then the buffer is printed using the traceIO mask and getTraceIOTruncateSize. Most code should call asynPrintIO instead of calling this method. This method is the same as printIO() but with the additional file and line arguments.
vprintIO	This is the same as printIO, but using a va_list as its final argument.
vprintIOSource	This is the same as printIOSource, but using a va_list as its final argument.

Standard Message Based Interfaces

These are interfaces for communicating with message based devices, where message based means that the device communicates via octet strings, i.e. arrays of 8 bit bytes. Three interfaces are provided: asynOctet, asynOctetBase, and asynOctetSyncIO. asynOctet is generic message based interface. asynOctetBase is an interface used by port drivers that implement asynOctet. It's primary purpose is to help with interrupt support. asynOctetSyncIO provides a synchronous interface to asynOctet and can be used by code that is willing to block.

asynOctet

asynOctet describes the methods implemented by drivers that use octet strings for sending commands and receiving responses from a device.

NOTE: The name octet is used instead of ASCII because it implies that communication is done via 8-bit bytes.

```
#define ASYN_EOM_CNT 0x0001 /*Request count reached*/
#define ASYN_EOM_EOS 0x0002 /*End of String detected*/
#define ASYN_EOM_END 0x0004 /*End indicator detected*/

typedef void (*interruptCallbackOctet)(void *userPvt, asynUser *pasynUser,
                                       char *data, size_t numchars, int eomReason);

typedef struct asynOctetInterrupt {
    asynUser *pasynUser;
    int      addr;
    interruptCallbackOctet callback;
    void *userPvt;
}asynOctetInterrupt;

#define asynOctetType "asynOctet"
typedef struct asynOctet{
    asynStatus (*write)(void *drvPvt, asynUser *pasynUser,
                       const char *data, size_t numchars, size_t *nbytesTransferred);
    asynStatus (*read)(void *drvPvt, asynUser *pasynUser,
                      char *data, size_t maxchars, size_t *nbytesTransferred,
                      int *eomReason);
    asynStatus (*flush)(void *drvPvt, asynUser *pasynUser);
    asynStatus (*registerInterruptUser)(void *drvPvt, asynUser *pasynUser,
                                       interruptCallbackOctet callback, void *userPvt,
                                       void **registrarPvt);
    asynStatus (*cancelInterruptUser)(void *drvPvt, asynUser *pasynUser,
                                       void *registrarPvt);
    asynStatus (*setInputEos)(void *drvPvt, asynUser *pasynUser,
                              const char *eos, int eoslen);
    asynStatus (*getInputEos)(void *drvPvt, asynUser *pasynUser,
                              char *eos, int eossize, int *eoslen);
    asynStatus (*setOutputEos)(void *drvPvt, asynUser *pasynUser,
                               const char *eos, int eoslen);
    asynStatus (*getOutputEos)(void *drvPvt, asynUser *pasynUser,
                               char *eos, int eossize, int *eoslen);
}asynOctet;
/* asynOctetBase does the following:
  calls registerInterface for asynOctet.
  Implements registerInterruptUser and cancelInterruptUser
  Provides default implementations of all methods.
  registerInterruptUser and cancelInterruptUser can be called
  directly rather than via queueRequest.
```

asynDriver

```

*/

#define asynOctetBaseType "asynOctetBase"
typedef struct asynOctetBase {
    asynStatus (*initialize)(const char *portName,
        asynDriverasynInterface *pasynOctetInterface,
        int processEosIn,int processEosOut,int interruptProcess);
    void (*callInterruptUsers)(asynUser *pasynUser,void *pasynPvt,
        char *data,size_t *nbytesTransferred,int *eomReason);
} asynOctetBase;
epicsShareExtern asynOctetBase *pasynOctetBase;

```

asynOctet

write	Send a message to the device. *nbytesTransferred is the number of 8-bit bytes sent to the device. Interpose or driver code may add end of string terminators to the message but the extra characters are not included in *nbytesTransferred.
read	Read a message from the device. *nbytesTransferred is the number of 8-bit bytes read from the device. If read returns asynSuccess than eomReason (some combination of ASYN_EOM_CNT, ASYN_EOM_EOS, and ASYN_EOM_END)tells why the read completed. Interpose or driver code may strip end of string terminators from the message. If it does the first eos character will be replaced by null and the eos characters will not be included in nbytesTransferred.
flush	Flush the input buffer.
registerInterruptUser	Register a user that will be called whenever a new message is received. NOTE: The callback must not block and must not call registerInterruptUser or cancelInterruptUser.
cancelInterruptUser	Cancel a registered user.
setInputEos	Set End Of String for input. For example "\n". Note that gpib drivers usually accept at most a one character terminator.
getInputEos	Get the current End of String.
setOutputEos	Set End Of String for output.
getOutputEos	Get the current End of String.

asynOctetBase is an interface and implementation for drivers that implement interface asynOctet. asynOctetBase implements registerInterruptUser and cancelInterruptUser.

For single device support, it can optionally implement interrupt support. A driver that implements interrupts must call registerInterruptSource. If it asks asynOctetBase to handle interrupts it calls asynOctetBase:callInterruptUsers when it has new data.

For single device support asynOctetBase can optionally call asynInterposeEosConfig to handle end of string processing for input and/or output.

Any null method in the interface passed to initialize are replaced by a method supplied by asynOctetBase.

For an example of how to use asynOctetBase look at asyn/testApp/src/echoDriver.c

asynOctetBase

initialize	After a driver calls registerPort it can call: pasynOctetBase->initialize(...
------------	--

asynDriver

	Any null methods in the asynInterface are replaced by default implementations. If the port is not multi-device and either processEosIn or processEosOut is specified, asynInterposeEosConfig is called. If the port is not multi-device and interruptProcess is specified, then whenever read is called, asynBase calls all the registered interrupt users. asynOctetBase can not implement processEosIn, processEosOut, and interruptProcess if the port is a multi-device port. Since this method is called only during initialization it can be called directly rather than via queueRequest.
callInterruptUsers	Calls the callbacks registered via registerInterruptUser.

asynOctetSyncIO

asynOctetSyncIO provides a convenient interface for software that needs to perform "synchronous" I/O to an asyn device, i.e. that starts an I/O operation and then blocks while waiting for the response. The code does not need to handle callbacks or understand the details of the asynManager and asynOctet interfaces. Examples include motor drivers running in their own threads, SNL programs, and the shell commands described later in this document.

```
typedef struct asynOctetSyncIO {
    asynStatus (*connect)(const char *port, int addr,
                          asynUser **ppasynUser, const char *drvInfo);
    asynStatus (*disconnect)(asynUser *pasynUser);
    asynStatus (*openSocket)(const char *server, int port, char **portName);
    asynStatus (*write)(asynUser *pasynUser,
                       char const *buffer, size_t buffer_len,
                       double timeout, size_t *nbytesTransferred);
    asynStatus (*read)(asynUser *pasynUser, char *buffer, size_t buffer_len,
                      double timeout, size_t *nbytesTransferred, int *eomReason);
    asynStatus (*writeRead)(asynUser *pasynUser,
                            const char *write_buffer, size_t write_buffer_len,
                            char *read_buffer, size_t read_buffer_len,
                            double timeout,
                            size_t *nbytesOut, size_t *nbytesIn, int *eomReason);
    asynStatus (*flush)(asynUser *pasynUser);
    asynStatus (*setInputEos)(asynUser *pasynUser,
                              const char *eos, int eoslen);
    asynStatus (*getInputEos)(asynUser *pasynUser,
                              char *eos, int eossize, int *eoslen);
    asynStatus (*setOutputEos)(asynUser *pasynUser,
                               const char *eos, int eoslen);
    asynStatus (*getOutputEos)(asynUser *pasynUser,
                               char *eos, int eossize, int *eoslen);
    asynStatus (*writeOnce)(const char *port, int addr,
                            char const *buffer, size_t buffer_len, double timeout,
                            size_t *nbytesTransferred, const char *drvInfo);
    asynStatus (*readOnce)(const char *port, int addr,
                           char *buffer, size_t buffer_len, double timeout,
                           size_t *nbytesTransferred, int *eomReason, const char *drvInfo);
    asynStatus (*writeReadOnce)(const char *port, int addr,
                                const char *write_buffer, size_t write_buffer_len,
                                char *read_buffer, size_t read_buffer_len,
                                double timeout,
                                size_t *nbytesOut, size_t *nbytesIn, int *eomReason,
                                const char *drvInfo);
    asynStatus (*flushOnce)(const char *port, int addr, const char *drvInfo);
    asynStatus (*setInputEosOnce)(const char *port, int addr,
                                  const char *eos, int eoslen, const char *drvInfo);
    asynStatus (*getInputEosOnce)(const char *port, int addr,
                                  char *eos, int eossize, int *eoslen, const char *drvInfo);
    asynStatus (*setOutputEosOnce)(const char *port, int addr,
                                   const char *eos, int eoslen, const char *drvInfo);
};
```

asynDriver

```
asynStatus (*getOutputEosOnce)(const char *port, int addr,  
                               char *eos, int eossz, int *eoslen, const char *drvInfo);  
} asynOctetSyncIO;  
epicsShareExtern asynOctetSyncIO *pasynOctetSyncIO;
```

asynOctetSyncIO

connect	Connects to an asyn port and address, returns a pointer to an asynUser structure.
disconnect	Disconnect. This frees all resources allocated by connect.
openSocket	Opens a new connection to a TCP/IP or UDP/IP socket, returning the name of a newly created asyn port. The name of the port created is of the form "server:port [protocol]", i.e. "corvette:21" or "164.54.160.50:21" or "corvette:21 UDP".
write	Calls asynOctet->write and waits for the operation to complete or time out.
read	Calls asynOctet->read. Waits for the operation to complete or time out.
writeRead	Calls pasynOctet->flush, pasynOctet->write, and asynOctet->read. Waits for the operations to complete or time out.
flush	Calls pasynOctet->flush
setInputEos	Calls pasynOctet->setInputEos
getInputEos	Calls pasynOctet->getInputEos
setOutputEos	Calls pasynOctet->setOutputEos
getOutputEos	Calls pasynOctet->getOutputEos
writeOnce	This does a connect, write, and disconnect.
readOnce	This does a connect, read, and disconnect.
readOnce	This does a connect, read, and disconnect.
writeReadOnce	This does a connect, writeRead, and disconnect.

End of String Support

asynOctet provides methods for handling end of string (message) processing. It does not specify policy. Device support code, interpose layers, or low level drivers can all handle EOS processing. An application developer must decide what policy will be followed for individual devices. The policy will be determined by the device, the device support, and the driver.

Standard Register Based Interfaces

Introduction

This section describes interfaces for register based devices. Support is provided for:

- Int32 - registers appear as 32 integers
- UInt32Digital - registers appear a 32 bit unsigned integers and masks can be used to address specific bits.
- Float64 - registers appear as double precision floats.
- Int8Array - Arrays of 8 bit integers.
- Int16Array - Arrays of 16 bit integers.
- Int32Array - Arrays of 32 bit integers.
- Float32Array - Arrays of single precision floats.
- Float64Array - Arrays of double precision floats.
- Enum - Arrays of strings, integer values and integer severities.

asynDriver

- GenericPointer - void* pointer.

Note that hardware may have registers with smaller sizes, e.g. 16 bit registers. The standard interfaces can still be used by setting the unused bits to 0.

For all of these interfaces a default implementation and a synchronous implementation are provided. Lets use Int32 as an example.

- asynInt32 - An interface with methods: read, write, getBounds, registerInterruptUser, and cancelInterruptUser.
- asynInt32Base - An interface used by drivers that implement asynInt32. It also has an implementation that:
 - ◆ registers the asynInt32 interface
 - ◆ has default methods for read, write, and getBounds. A null method in the interface passed to initialize is replaced by a method implemented by asynInt32Base.
 - ◆ implements registerInterruptUser and cancelInterruptUser. The caller should leave these methods null because asynInt32Base always replaces them by it's implementation.

Drivers that implement asynInt32 normally call asynInt32Base:initialize. It implements registerInterruptUser and cancelInterruptUser. If the driver provides interrupt support it must:

- ◆ Call pasynInt32Base->initialize
 - ◆ Call pasynManager->registerInterruptSource
 - ◆ Interact with asynManager to call the users that have registered with asynInt32Base:registerInterruptUser. The driver calls users when there is new data available.
- asyn/testEpicsApp/src/int32Driver.c provides an example of how to provide support for interrupts.
- asynInt32SyncIO - A synchronous interface to asynInt32

addr - What does it mean for register based interfaces?

Low level register based drivers are normally multi-device. The meaning of addr is:

- Int32 - The driver supports an array of Int32 values. addr selects an array element. For example a 16 channel ADC would support addr 0 through 15.
- Int8Array - Each addr is an array of Int8 values.
- Int16Array - Each addr is an array of Int16 values.
- Int32Array - Each addr is an array of Int32 values.
- Float64 - The driver supports an array of Float64 values. addr selects an array element.
- Float32Array - Each addr is an array of Float32 values.
- Float64Array - Each addr is an array of Float64 values.
- UInt32Digital - The driver supports an array of UInt32 values. addr selects an array element. For example a 128 bit digital I/O module appears as an array of four UInt32 registers.

Example Drivers

Two examples of drivers that might implement and use the interfaces are:

- Analog to Digital Convertor.

An example is a 16 channel ADC. The driver implements interfaces asynCommon and asynInt32. It uses interface asynInt32Base. It can call asynManager:interruptStart and asynManager:interruptEnd to support interrupts. It can use pasynUser->reason and addr to decide which callbacks to call.

asynDriver

asyn/testEpicsApp/int32Driver.c is a soft example of how to implement a driver that implements asynInt32 and also asynFloat64.

- Digital I/O module

An example is a 64 bit combination digital input and digital output module. The driver implements interfaces asynCommon and asynUInt32Digital. It uses interface asynUInt32DigitalBase. It can call asynManager:interruptStart and asynManager:interruptEnd to support interrupts. It can use reason, mask, and addr to decide which callbacks to call. asyn/testEpicsApp/uint32DigitalDriver.c is a soft example of a driver that implements asynUInt32Digital.

asynInt32

asynInt32 describes the methods implemented by drivers that use integers for communicating with a device.

```
typedef void (*interruptCallbackInt32)(void *userPvt, asynUser *pasynUser,
                                       epicsInt32 data);
typedef struct asynInt32Interrupt {
    int addr;
    asynUser *pasynUser;
    interruptCallbackInt32 callback;
    void *userPvt;
} asynInt32Interrupt;
#define asynInt32Type "asynInt32"
typedef struct asynInt32 {
    asynStatus (*write)(void *drvPvt, asynUser *pasynUser, epicsInt32 value);
    asynStatus (*read)(void *drvPvt, asynUser *pasynUser, epicsInt32 *value);
    asynStatus (*getBounds)(void *drvPvt, asynUser *pasynUser,
                           epicsInt32 *low, epicsInt32 *high);
    asynStatus (*registerInterruptUser)(void *drvPvt, asynUser *pasynUser,
                                       interruptCallbackInt32 callback, void *userPvt,
                                       void **registrarPvt);
    asynStatus (*cancelInterruptUser)(void *drvPvt, asynUser *pasynUser,
                                       void *registrarPvt);
} asynInt32;

/* asynInt32Base does the following:
   calls registerInterface for asynInt32.
   Implements registerInterruptUser and cancelInterruptUser
   Provides default implementations of all methods.
   registerInterruptUser and cancelInterruptUser can be called
   directly rather than via queueRequest.
*/

#define asynInt32BaseType "asynInt32Base"
typedef struct asynInt32Base {
    asynStatus (*initialize)(const char *portName,
                            asynInterface *pint32Interface);
} asynInt32Base;
epicsShareExtern asynInt32Base *pasynInt32Base;
```

asynInt32

write	Write an integer value to the device.
read	Read an integer value from the device.
getBounds	Get the bounds. For example a 16 bit ADC might set low=-32768 and high = 32767.
registerInterruptUser	

asynDriver

	Registers a callback that will be called whenever new data is available. Since it can be called directly rather than via a queueRequest this method must not block.
cancelInterruptUser	Cancels the callback. Since it can be called directly rather than via a queueRequest this method must not block.

asynInt32Base is an interface and associated code that is used by drivers that implement interface asynInt32. asynInt32Base provides code to handle registerInterruptUser/cancelInterruptUser. The driver must itself call the callbacks via calls to asynManager:interruptStart and asynManager:interruptEnd.

asynInt32Base

initialize	After a driver calls registerPort it can call: <pre>pasynInt32Base->initialize(...</pre> Any null methods in the asynInterface are replaced by default implementations.
------------	---

The default implementation of each method does the following:

asynInt32

write	Reports an error "write is not supported" and returns asynError
read	Reports an error "read is not supported" and returns asynError
getBounds	Reports an error "getBounds is not supported" and returns asynError
registerInterruptUser	registers an interrupt callback.
cancelInterruptUser	Cancels the callback

asynInt32SyncIO

asynInt32SyncIO describes a synchronous interface to asynInt32. The code that calls it must be willing to block.

```
#define asynInt32SyncIOType "asynInt32SyncIO"
typedef struct asynInt32SyncIO {
    asynStatus (*connect)(const char *port, int addr,
                        asynUser **ppasynUser, const char *drvInfo);
    asynStatus (*disconnect)(asynUser *pasynUser);
    asynStatus (*write)(asynUser *pasynUser, epicsInt32 value, double timeout);
    asynStatus (*read)(asynUser *pasynUser, epicsInt32 *pvalue, double timeout);
    asynStatus (*getBounds)(asynUser *pasynUser,
                            epicsInt32 *plow, epicsInt32 *phigh);
    asynStatus (*writeOnce)(const char *port, int addr,
                            epicsInt32 value, double timeout, const char *drvInfo);
    asynStatus (*readOnce)(const char *port, int addr,
                            epicsInt32 *pvalue, double timeout, const char *drvInfo);
    asynStatus (*getBoundsOnce)(const char *port, int addr,
                                epicsInt32 *plow, epicsInt32 *phigh, const char *drvInfo);
} asynInt32SyncIO;
epicsShareExtern asynInt32SyncIO *pasynInt32SyncIO;
```

asynInt32SyncIO

connect	Connects to a port and address, returns a pointer to an asynUser.
---------	---

asynDriver

disconnect	Disconnect. This frees all resources allocated by connect.
write	Calls pasynInt32->write and waits for the operation to complete or time out.
read	Calls pasynInt32->read and waits for the operation to complete or time out.
getBounds	Calls pasynInt32->getBounds and waits for the operation to complete or time out.
writeOnce	This does a connect, write, and disconnect.
readOnce	This does a connect, read, and disconnect.
getBoundsOnce	This does a connect, getBounds, and disconnect.

asynUInt32Digital

asynUInt32Digital describes the methods for communicating via bits of an Int32 register.

```
typedef enum {
    interruptOnZeroToOne, interruptOnOneToZero, interruptOnBoth
} interruptReason;

typedef void (*interruptCallbackUInt32Digital)(void *userPvt,
        asynUser *pasynUser, epicsUInt32 data);
typedef struct asynUInt32DigitalInterrupt {
    epicsUInt32 mask;
    int addr;
    asynUser *pasynUser;
    interruptCallbackUInt32Digital callback;
    void *userPvt;
} asynUInt32DigitalInterrupt;
#define asynUInt32DigitalType "asynUInt32Digital"
typedef struct asynUInt32Digital {
    asynStatus (*write)(void *drvPvt, asynUser *pasynUser,
        epicsUInt32 value, epicsUInt32 mask);
    asynStatus (*read)(void *drvPvt, asynUser *pasynUser,
        epicsUInt32 *value, epicsUInt32 mask);
    asynStatus (*setInterrupt)(void *drvPvt, asynUser *pasynUser,
        epicsUInt32 mask, interruptReason reason);
    asynStatus (*clearInterrupt)(void *drvPvt, asynUser *pasynUser,
        epicsUInt32 mask);
    asynStatus (*getInterrupt)(void *drvPvt, asynUser *pasynUser,
        epicsUInt32 *mask, interruptReason reason);
    asynStatus (*registerInterruptUser)(void *drvPvt, asynUser *pasynUser,
        interruptCallbackUInt32Digital callback, void *userPvt, epicsUInt32 mask,
        void **registrarPvt);
    asynStatus (*cancelInterruptUser)(void *drvPvt, asynUser *pasynUser,
        void *registrarPvt);
} asynUInt32Digital;

/* asynUInt32DigitalBase does the following:
   calls registerInterface for asynUInt32Digital.
   Implements registerInterruptUser and cancelInterruptUser
   Provides default implementations of all methods.
   registerInterruptUser and cancelInterruptUser can be called
   directly rather than via queueRequest.
*/

#define asynUInt32DigitalBaseType "asynUInt32DigitalBase"
typedef struct asynUInt32DigitalBase {
    asynStatus (*initialize)(const char *portName,
        asynInterface *pasynUInt32DigitalInterface);
} asynUInt32DigitalBase;
epicsShareExtern asynUInt32DigitalBase *pasynUInt32DigitalBase;
```

asynDriver

asynUInt32Digital

write	Modify the bits specified by mask with the corresponding bits in value.
read	Read the bits specified by mask into value. The other bits of value will be set to 0.
setInterrupt	Set the bits specified by mask to interrupt for reason.
clearInterrupt	Clear the interrupt bits specified by mask.
getInterrupt	Set each bit of mask that is enabled for reason.
registerInterruptUser	Register a callback that will be called whenever the driver detects a change in any of the bits specified by mask. Since it can be called directly rather than via a queueRequest this method must not block.
cancelInterruptUser	Cancel the registered callback. Since it can be called directly rather than via a queueRequest this method must not block.

asynUInt32DigitalBase is an interface and associated code that is used by drivers that implement interface asynUInt32Digital. asynUInt32DigitalBase provides code to implement registerInterruptUser and cancelInterruptUser.

asynUInt32DigitalBase

initialize	<p>After a driver calls registerPort it can call:</p> <pre>pasynUInt32DigitalBase->initialize(...</pre> <p>Any null methods in the asynInterface are replaced by default implementations.</p>
------------	--

The default implementation of each method does the following:

asynUInt32Digital

write	Reports an error "write is not supported" and returns asynError
read	Reports an error "read is not supported" and returns asynError
setInterrupt	Reports an error "setInterrupt is not supported" and returns asynError
clearInterrupt	Reports an error "clearInterrupt is not supported" and returns asynError
getInterrupt	Reports an error "getInterrupt is not supported" and returns asynError
registerInterruptUser	registers the interrupt user. The low level driver must call the registered callbacks via calls to asynManager:interruptStart and asynManager:interruptEnd.
cancelInterruptUser	Cancel the callback

asynUInt32DigitalSyncIO

asynUInt32DigitalSyncIO describes a synchronous interface to asynUInt32Digital. The code that calls it must be willing to block.

```
#define asynUInt32DigitalSyncIOType "asynUInt32DigitalSyncIO"
typedef struct asynUInt32DigitalSyncIO {
    asynStatus (*connect)(const char *port, int addr,
                        asynUser **ppasynUser, const char *drvInfo);
    asynStatus (*disconnect)(asynUser *pasynUser);
    asynStatus (*write)(asynUser *pasynUser,
                      epicsUInt32 value, epicsUInt32 mask, double timeout);
    asynStatus (*read)(asynUser *pasynUser,
```

asynDriver

```

        epicsUInt32 *pvalue,epicsUInt32 mask,double timeout);
asynStatus (*setInterrupt)(asynUser *pasynUser,
        epicsUInt32 mask, interruptReason reason,double timeout);
asynStatus (*clearInterrupt)(asynUser *pasynUser,
        epicsUInt32 mask,double timeout);
asynStatus (*getInterrupt)(asynUser *pasynUser,
        epicsUInt32 *mask, interruptReason reason,double timeout);
asynStatus (*writeOnce)(const char *port, int addr,
        epicsUInt32 value,epicsUInt32 mask,double timeout,
        const char *drvInfo);
asynStatus (*readOnce)(const char *port, int addr,
        epicsUInt32 *pvalue,epicsUInt32 mask,double timeout,
        const char *drvInfo);
asynStatus (*setInterruptOnce)(const char *port, int addr,
        epicsUInt32 mask, interruptReason reason,double timeout,
        const char *drvInfo);
asynStatus (*clearInterruptOnce)(const char *port, int addr,
        epicsUInt32 mask,double timeout,const char *drvInfo);
asynStatus (*getInterruptOnce)(const char *port, int addr,
        epicsUInt32 *mask, interruptReason reason,double timeout,
        const char *drvInfo);
} asynUInt32DigitalSyncIO;
epicsShareExtern asynUInt32DigitalSyncIO *pasynUInt32DigitalSyncIO;

```

asynUInt32DigitalSyncIO

connect	Connects to a port and address, returns a pointer to an asynUser structure.
disconnect	Disconnect. This frees all resources allocated by connect.
write	Calls pasynUInt32Digital->write and waits for the operation to complete or time out.
read	Calls pasynUInt32Digital->read and waits for the operation to complete or time out.
setInterrupt	Calls pasynUInt32Digital->setInterrupt and waits for the operation to complete or time out.
clearInterrupt	Calls pasynUInt32Digital->clearInterrupt and waits for the operation to complete or time out.
getInterrupt	Calls pasynUInt32Digital->getInterrupt and waits for the operation to complete or time out.
writeOnce,....,getInterruptOnce	Does a connect, (write,....,getInterrupt), and disconnect.

asynFloat64

asynFloat64 describes the methods for communicating via IEEE double precision float values.

```

typedef void (*interruptCallbackFloat64)(void *userPvt, asynUser *pasynUser,
        epicsFloat64 data);
typedef struct asynFloat64Interrupt {
    asynUser *pasynUser;
    int addr;
    interruptCallbackFloat64 callback;
    void *userPvt;
} asynFloat64Interrupt;
#define asynFloat64Type "asynFloat64"
typedef struct asynFloat64 {
    asynStatus (*write)(void *drvPvt, asynUser *pasynUser, epicsFloat64 value);
    asynStatus (*read)(void *drvPvt, asynUser *pasynUser, epicsFloat64 *value);

```

asynDriver

```

asynStatus (*registerInterruptUser)(void *drvPvt, asynUser *pasynUser,
    interruptCallbackFloat64 callback, void *userPvt, void **registrarPvt);
asynStatus (*cancelInterruptUser)(void *drvPvt, asynUser *pasynUser,
    void *registrarPvt);
} asynFloat64;

/* asynFloat64Base does the following:
calls registerInterface for asynFloat64.
Implements registerInterruptUser and cancelInterruptUser
Provides default implementations of all methods.
registerInterruptUser and cancelInterruptUser can be called
directly rather than via queueRequest.
*/

#define asynFloat64BaseType "asynFloat64Base"
typedef struct asynFloat64Base {
    asynStatus (*initialize)(const char *portName,
        asynInterface *pasynFloat64Interface);
} asynFloat64Base;
epicsShareExtern asynFloat64Base *pasynFloat64Base;

```

asynFloat64

write	Write a value.
read	Read a value.
registerInterruptUser	Register a callback that is called whenever new data is available. Since it can be called directly rather than via a queueRequest this method must not block.
cancelInterruptUser	Cancel the callback. Since it can be called directly rather than via a queueRequest this method must not block.

asynFloat64Base

initialize	<p>After a driver calls registerPort it can call:</p> <pre>pasynFloat64Base->initialize(...</pre> <p>Any null methods in the asynInterface are replaced by default implementations.</p>
------------	--

The default implementation of each method does the following:

asynFloat64

write	Reports an error "write is not supported" and returns asynError
read	Reports an error "read is not supported" and returns asynError
registerInterruptUser	registers the interrupt user. The low level driver must call the registered callbacks via calls to asynManager:interruptStart and asynManager:interruptEnd.
cancelInterruptUser	Cancels the callback

asynFloat64SyncIO

asynFloat64SyncIO describes a synchronous interface to asynFloat64. The code that calls it must be willing to block.

```

#define asynFloat64SyncIOType "asynFloat64SyncIO"
typedef struct asynFloat64SyncIO {
    asynStatus (*connect)(const char *port, int addr,

```

asynFloat64

asynDriver

```
        asynUser **ppasynUser, const char *drvInfo);
asynStatus (*disconnect)(asynUser *pasynUser);
asynStatus (*write)(asynUser *pasynUser,epicsFloat64 value,double timeout);
asynStatus (*read)(asynUser *pasynUser,epicsFloat64 *pvalue,double timeout);
asynStatus (*writeOnce)(const char *port, int addr,
        epicsFloat64 value,double timeout,const char *drvInfo);
asynStatus (*readOnce)(const char *port, int addr,
        epicsFloat64 *pvalue,double timeout,const char *drvInfo);
} asynFloat64SyncIO;
epicsShareExtern asynFloat64SyncIO *pasynFloat64SyncIO;
```

asynFloat64SyncIO

connect	Connects to a port and address, returns a pointer to an asynUser structure.
disconnect	Disconnect. This frees all resources allocated by connect.
write	Calls pasynFloat64->write and waits for the operation to complete or time out.
read	Calls pasynFloat64->read and waits for the operation to complete or time out.
writeOnce	This does a connect, write, and disconnect.
readOnce	This does a connect, read, and disconnect.

asynXXXArray (where XXX is Int8, Int16, Int32, Float32 or Float64)

asynXXXArray describes the methods for communicating via 8, 16, or 32-bit integers, or 32 or 64-bit IEEE float values.

```
typedef void (*interruptCallbackXXXArray)(
        void *userPvt, asynUser *pasynUser,
        epicsXXX *data, size_t nelements);
typedef struct asynXXXArrayInterrupt {
    asynUser *pasynUser;
    int addr;
    interruptCallbackXXXArray callback;
    void *userPvt;
} asynXXXArrayInterrupt;
#define asynXXXArrayType "asynXXXArray"
typedef struct asynXXXArray {
    asynStatus (*write)(void *drvPvt, asynUser *pasynUser,
        epicsXXX *value, size_t nelements);
    asynStatus (*read)(void *drvPvt, asynUser *pasynUser,
        epicsXXX *value, size_t nelements, size_t *nIn);
    asynStatus (*registerInterruptUser)(void *drvPvt, asynUser *pasynUser,
        interruptCallbackXXXArray callback,
        void *userPvt,void **registrarPvt);
    asynStatus (*cancelInterruptUser)(void *drvPvt, asynUser *pasynUser,
        void *registrarPvt);
} asynXXXArray;

/* asynXXXArrayBase does the following:
calls registerInterface for asynXXXArray.
Implements registerInterruptUser and cancelInterruptUser
Provides default implementations of all methods.
registerInterruptUser and cancelInterruptUser can be called
directly rather than via queueRequest.
*/

#define asynXXXArrayBaseType "asynXXXArrayBase"
typedef struct asynXXXArrayBase {
    asynStatus (*initialize)(const char *portName,
```

asynDriver

```

        asynInterface *pXXXArrayInterface);
} asynXXXArrayBase;
epicsShareExtern asynXXXArrayBase *pasynXXXArrayBase;

```

asynXXXArray

write	Write an array of values.
read	Read an array of values.
registerInterruptUser	Register a callback that is called whenever new data is available.
cancelInterruptUser	Cancel the callback

asynXXXArrayBase

initialize	<p>After a driver calls registerPort it can call:</p> <pre>pasynXXXArrayBase->initialize(...</pre> <p>Any null methods in the asynInterface are replaced by default implementations.</p>
------------	---

The default implementation of each method does the following:

asynXXXArrayBase

write	Reports an error "write is not supported" and returns asynError
read	Reports an error "read is not supported" and returns asynError
registerInterruptUser	Registers an interrupt callback.
cancelInterruptUser	Cancels the callback

asynXXXArraySyncIO

asynXXXArraySyncIO describes a synchronous interface to asynXXXArray. The code that calls it must be willing to block.

```

#define asynXXXArraySyncIOType "asynXXXArraySyncIO"
typedef struct asynXXXArraySyncIO {
    asynStatus (*connect)(const char *port, int addr,
                          asynUser **ppasynUser, const char *drvInfo);
    asynStatus (*disconnect)(asynUser *pasynUser);
    asynStatus (*write)(asynUser *pasynUser, epicsXXX *pvalue, size_t nelelem, double timeout);
    asynStatus (*read)(asynUser *pasynUser, epicsXXX *pvalue, size_t nelelem, size_t *nIn, double timeout);
    asynStatus (*writeOnce)(const char *port, int addr,
                            epicsXXX *pvalue, size_t nelelem, double timeout, const char *drvInfo);
    asynStatus (*readOnce)(const char *port, int addr,
                           epicsXXX *pvalue, size_t nelelem, size_t *nIn, double timeout, const char *drvInfo);
} asynXXXArraySyncIO;
epicsShareExtern asynXXXArraySyncIO *pasynXXXArraySyncIO;

```

asynXXXArraySyncIO

connect	Connects to a port and address, returns a pointer to an asynUser.
disconnect	Disconnect. This frees all resources allocated by connect.

asynDriver

write	Calls pasynXXXArray->write and waits for the operation to complete or time out.
read	Calls pasynXXXArray->read and waits for the operation to complete or time out.
writeOnce	This does a connect, write, and disconnect.
readOnce	This does a connect, read, and disconnect.
getBoundsOnce	This does a connect, getBounds, and disconnect.

asynEnum

asynEnum describes the methods implemented by drivers to define the enum strings, values, and severities for a device.

This interface is typically used by drivers to set the enum strings and values for EPICS bi, bo, mbbi, and mbbo records. The strings[] are used to define the ZNAM and ONAM fields in bi and bo records, and the ZRST, ONST, ...FFST fields in mbbi and mbbo records. The integer values[] are ignored for bi and bo records, since these always have the values of 0 and 1 corresponding to the ZNAM and ONAM states. The integer values[] are used to assign the ZRVL, ONVL, ... FFVL fields for mbbi and mbbo records. The integer severities[] are used to set the ZSV and OSV fields of bi and bo records, and the ZRSV, ONSV, ... FFSV fields of mbbi and mbbo records. The nelements parameter in the write() and read() functions is used by the client to specify the dimensions of the strings[], values[], and severities[] arrays. The driver must not access these arrays beyond element nElements-1. The nIn parameter in the read() is used by the driver to set the actual number of value enum strings, values, and severities. There is no size limitation on nElements imposed by the asynEnum interface. However, the bi and bo records limit nElements to 2, and mbbi and mbbo records limit nElements to 16. There is no size limitation on the strings imposed by the asynEnum interface. However, the string fields in the bi, bo, mbbo, and mbbi records are currently limited to 26 characters.

Clients must ensure that the char* pointers passed in strings[] in the read() function are either set to NULL or have been allocated by malloc(). The driver read() function must first call free() if a string pointer contains a non-NULL value. The driver must then allocate the strings using malloc() before copying the current enum string values to them.

```
typedef void (*interruptCallbackEnum)
    void *userPvt, asynUser *pasynUser,
    char *strings[], int values[], int severities[], size_t nelements);
typedef struct asynEnumInterrupt {
    asynUser *pasynUser;
    int addr;
    interruptCallbackEnum callback;
    void *userPvt;
} asynEnumInterrupt;
#define asynEnumType "asynEnum"
typedef struct asynEnum {
    asynStatus (*write)(void *drvPvt, asynUser *pasynUser,
        char *strings[], int values[], int severities[], size_t nelements);
    asynStatus (*read)(void *drvPvt, asynUser *pasynUser,
        char *strings[], int values[], int severities[], size_t nelements, size_t *nIn);
    asynStatus (*registerInterruptUser)(void *drvPvt, asynUser *pasynUser,
        interruptCallbackEnum callback, void *userPvt,
        void **registrarPvt);
    asynStatus (*cancelInterruptUser)(void *drvPvt, asynUser *pasynUser,
        void *registrarPvt);
} asynEnum;

/* asynEnumBase does the following:
   calls registerInterface for asynEnum.
   Implements registerInterruptUser and cancelInterruptUser
```


asynDriver

```
Provides default implementations of all methods.
registerInterruptUser and cancelInterruptUser can be called
directly rather than via queueRequest.
*/

#define asynEnumBaseType "asynEnumBase"
typedef struct asynEnumBase {
    asynStatus (*initialize)(const char *portName,
                            asynInterface *pEnumInterface);
} asynEnumBase;
epicsShareExtern asynEnumBase *pasynEnumBase;
```

asynEnum

write	Writes the enum strings, enum values and enum severities to the driver.
read	Reads the enum strings, enum values and enum severities to the driver.
registerInterruptUser	Registers a callback that will be called whenever there are new enum strings, values and severities. Since it can be called directly rather than via a queueRequest this method must not block.
cancelInterruptUser	Cancels the callback. Since it can be called directly rather than via a queueRequest this method must not block.

asynEnumBase is an interface and associated code that is used by drivers that implement interface asynEnum. asynEnumBase provides code to handle registerInterruptUser/cancelInterruptUser. The driver must itself call the callbacks via calls to asynManager:interruptStart and asynManager:interruptEnd.

asynEnumBase

initialize	After a driver calls registerPort it can call: <pre>pasynEnumBase->initialize(...</pre> Any null methods in the asynInterface are replaced by default implementations.
------------	---

The default implementation of each method does the following:

asynEnum

write	Reports an error "write is not supported" and returns asynError
read	Reports an error "read is not supported" and returns asynError
registerInterruptUser	registers an interrupt callback.
cancelInterruptUser	Cancels the callback

asynEnumSyncIO

asynEnumSyncIO describes a synchronous interface to asynEnum. The code that calls it must be willing to block.

```
#define asynEnumSyncIOType "asynEnumSyncIO"
typedef struct asynEnumSyncIO {
    asynStatus (*connect)(const char *port, int addr,
                        asynUser **ppasynUser, const char *drvInfo);
    asynStatus (*disconnect)(asynUser *pasynUser);
    asynStatus (*write)(asynUser *pasynUser, char *strings[], int values[], int severities[],
```

asynEnum

asynDriver

```
        size_t nElements, double timeout);
asynStatus (*read)(asynUser *pasynUser, char *string[], int values[], int severities[],
                  size_t nElements, size_t *nIn, double timeout);
asynStatus (*writeOnce)(const char *port, int addr, char *strings[], int values[], int severities[],
                       size_t nElements, double timeout, const char *drvInfo);
asynStatus (*readOnce)(const char *port, int addr, char *strings[], int values[], int severities[],
                      size_t nElements, size_t *nIn, double timeout, const char *drvInfo);
} asynEnumSyncIO;
epicsShareExtern asynEnumSyncIO *pasynEnumSyncIO;
```

asynEnumSyncIO

connect	Connects to a port and address, returns a pointer to an asynUser.
disconnect	Disconnect. This frees all resources allocated by connect.
write	Calls pasynEnum->write and waits for the operation to complete or time out.
read	Calls pasynEnum->read and waits for the operation to complete or time out.
writeOnce	This does a connect, write, and disconnect.
readOnce	This does a connect, read, and disconnect.
getBoundsOnce	This does a connect, getBounds, and disconnect.

asynGenericPointer

asynGenericPointer describes the methods for communicating via void* pointers. asyn clients and port drivers must agree on the type of object that is being pointed to!

```
typedef void (*interruptCallbackGenericPointer)(void *userPvt, asynUser *pasynUser,
                                              void *pdata);
typedef struct asynGenericPointerInterrupt {
    asynUser *pasynUser;
    int addr;
    interruptCallbackGenericPointer callback;
    void *userPvt;
} asynGenericPointerInterrupt;
#define asynGenericPointerType "asynGenericPointer"
typedef struct asynGenericPointer {
    asynStatus (*write)(void *drvPvt, asynUser *pasynUser, void *pvalue);
    asynStatus (*read)(void *drvPvt, asynUser *pasynUser, void *pvalue);
    asynStatus (*registerInterruptUser)(void *drvPvt, asynUser *pasynUser,
                                       interruptCallbackGenericPointer callback, void *userPvt, void **registrarPvt);
    asynStatus (*cancelInterruptUser)(void *drvPvt, asynUser *pasynUser,
                                       void *registrarPvt);
} asynGenericPointer;

/* asynGenericPointerBase does the following:
calls registerInterface for asynGenericPointer.
Implements registerInterruptUser and cancelInterruptUser
Provides default implementations of all methods.
registerInterruptUser and cancelInterruptUser can be called
directly rather than via queueRequest.
*/

#define asynGenericPointerBaseType "asynGenericPointerBase"
typedef struct asynGenericPointerBase {
    asynStatus (*initialize)(const char *portName,
                            asynInterface *pasynGenericPointerInterface);
} asynGenericPointerBase;
epicsShareExtern asynGenericPointerBase *pasynGenericPointerBase;
```

asynDriver

asynGenericPointer

write	Write a value.
read	Read a value.
registerInterruptUser	Register a callback that is called whenever new data is available. Since it can be called directly rather than via a queueRequest this method must not block.
cancelInterruptUser	Cancel the callback. Since it can be called directly rather than via a queueRequest this method must not block.

asynGenericPointerBase

initialize	<p>After a driver calls registerPort it can call:</p> <pre>pasynGenericPointerBase->initialize(...</pre> <p>Any null methods in the asynInterface are replaced by default implementations.</p>
------------	---

The default implementation of each method does the following:

asynGenericPointer

write	Reports an error "write is not supported" and returns asynError
read	Reports an error "read is not supported" and returns asynError
registerInterruptUser	registers the interrupt user. The low level driver must call the registered callbacks via calls to asynManager:interruptStart and asynManager:interruptEnd.
cancelInterruptUser	Cancels the callback

asynGenericPointerSyncIO

asynGenericPointerSyncIO describes a synchronous interface to asynGenericPointer. The code that calls it must be willing to block.

```
#define asynGenericPointerSyncIOType "asynGenericPointerSyncIO"
typedef struct asynGenericPointerSyncIO {
    asynStatus (*connect)(const char *port, int addr,
                          asynUser **ppasynUser, const char *drvInfo);
    asynStatus (*disconnect)(asynUser *pasynUser);
    asynStatus (*write)(asynUser *pasynUser, void *pvalue, double timeout);
    asynStatus (*read)(asynUser *pasynUser, void *pvalue, double timeout);
    asynStatus (*writeRead)(asynUser *pasynUser, void *pwrite_buffer, void *pread_buffer, double timeout);
    asynStatus (*writeOnce)(const char *port, int addr,
                            void *pvalue, double timeout, const char *drvInfo);
    asynStatus (*readOnce)(const char *port, int addr,
                           void *pvalue, double timeout, const char *drvInfo);
    asynStatus (*writeReadOnce)(const char *port, int addr,
                                void *pwrite_buffer, void *pread_buffer, double timeout, const char *drvInfo);
} asynGenericPointerSyncIO;
epicsShareExtern asynGenericPointerSyncIO *pasynGenericPointerSyncIO;
```

asynGenericPointerSyncIO

connect	Connects to a port and address, returns a pointer to an asynUser structure.
disconnect	Disconnect. This frees all resources allocated by connect.

asynDriver

write	Calls pasynGenericPointer->write and waits for the operation to complete or time out.
read	Calls pasynGenericPointer->read and waits for the operation to complete or time out.
writeRead	Calls pasynGenericPointer->write, then pasynGenericPointer->read. Waits for the operations to complete or time out.
writeOnce	This does a connect, write, and disconnect.
readOnce	This does a connect, read, and disconnect.
writeReadOnce	This does a connect, writeRead, and disconnect.

asynStandardInterfacesBase

asynStandardInterfacesBase is an interface designed as a convenience to minimize the amount of code that must be written in the initialization routine of a port driver that uses the standard asyn message-based or register-based interfaces that are described above. Without asynStandardInterfacesBase a port driver needs to call asynRegisterInterface(), and possibly asynRegisterInterruptSource() for each interface that it supports, and handle any errors that may occur in these calls. It also needs to explicitly include several fields in its drvPvt structure for each interface. asynStandardInterfacesBase provides an interface that allows port drivers to include a single structure in its drvPvt structure, and define values in this structure. It then calls a single function to register all interfaces that it supports, and to register itself as an interrupt source on one or more of those interfaces. This can reduce the number of lines of code in the driver initialization routine by a factor of four or more.

asynStandardInterfaces structure

The following is the definition of the asynStandardInterfaces structure. Drivers will normally have a structure of this type contained in their drvPvt structure. If this structure is initialized to all zeros when drvPvt is created, then all that is necessary is to fill in the addresses of each of each of the supported interfaces (in that interface's .pinterface field), and to set the CanInterrupt flag to 1 for those interfaces that are interrupt sources.

```
typedef struct asynStandardInterfaces {
    asynInterface common;

    asynInterface drvUser;

    asynInterface option;

    asynInterface octet;
    int octetProcessEosIn;
    int octetProcessEosOut;
    int octetInterruptProcess;
    int octetCanInterrupt;
    void *octetInterruptPvt;

    asynInterface uInt32Digital;
    int uInt32DigitalCanInterrupt;
    void *uInt32DigitalInterruptPvt;

    asynInterface int32;
    int int32CanInterrupt;
    void *int32InterruptPvt;

    asynInterface float64;
    int float64CanInterrupt;
    void *float64InterruptPvt;

    asynInterface int8Array;
    int int8ArrayCanInterrupt;
```

asynDriver

```
void *int8ArrayInterruptPvt;

asynInterface int16Array;
int int16ArrayCanInterrupt;
void *int16ArrayInterruptPvt;

asynInterface int32Array;
int int32ArrayCanInterrupt;
void *int32ArrayInterruptPvt;

asynInterface float32Array;
int float32ArrayCanInterrupt;
void *float32ArrayInterruptPvt;

asynInterface float64Array;
int float64ArrayCanInterrupt;
void *float64ArrayInterruptPvt;

asynInterface genericPointer;
int genericPointerCanInterrupt;
void *genericPointerInterruptPvt;

asynInterface Enum;
int enumCanInterrupt;
void *enumInterruptPvt;

} asynStandardInterfaces;
```

asynStandardInterfacesBase interface

The following is the definition of the asynStandardInterfacesBase interface.

```
typedef struct asynStandardInterfacesBase {
    asynStatus (*initialize)(const char *portName, asynStandardInterfaces *pInterfaces,
                           asynUser *pasynUser, void *pPvt);
} asynStandardInterfacesBase;

epicsShareExtern asynStandardInterfacesBase *pasynStandardInterfacesBase;
```

asynStandardInterfacesBase has a single method, initialize(), which calls registerInterface or Base->initialize for each interface which has a non-NULL value in its .pinterface field. It also calls registerInterruptSource for interfaces that are defined and that have the CanInterrupt flag set to 1. The pasynUser argument to the initialize() method is used only to provide a place for the method to return an error message (in pasynUser->errorMessage) so the invoking routine may reuse or free the asynUser structure when the method has returned.

The following is an example of the code required in a port driver that uses the asynStandardInterfacesBase interface.

```
#include <asynStandardInterfaces.h>
...
typedef struct drvADPvt {
...
    /* The asyn interfaces this driver implements */
    asynStandardInterfaces asynStdInterfaces;

    /* asynUser connected to ourselves for asynTrace */
    asynUser *pasynUser;
...
}
```

asynDriver

```
} drvADPvt;
...
/* Structures with function pointers for each of the asyn interfaces */
static asynCommon ifaceCommon = {
    report,
    connect,
    disconnect
};

static asynInt32 ifaceInt32 = {
    writeInt32,
    readInt32,
    getBounds
};

static asynFloat64 ifaceFloat64 = {
    writeFloat64,
    readFloat64
};

static asynOctet ifaceOctet = {
    writeOctet,
    NULL,
    readOctet,
};

static asynDrvUser ifaceDrvUser = {
    drvUserCreate,
    drvUserGetType,
    drvUserDestroy
};

static asynGenericPointer ifaceGenericPointer = {
    writeADImage,
    readADImage
};
...

int simDetectorConfig(const char *portName, int maxSizeX, int maxSizeY, int dataType)
{
    drvADPvt *pPvt;
    int status = asynSuccess;
    char *functionName = "simDetectorConfig";
    asynStandardInterfaces *pInterfaces;

    pPvt = callocMustSucceed(1, sizeof(*pPvt), functionName);
    pPvt->portName = epicsStrDup(portName);

    status = pasynManager->registerPort(portName,
                                       ASYN_MULTIDEVICE | ASYN_CANBLOCK,
                                       1, /* autoconnect */
                                       0, /* medium priority */
                                       0); /* default stack size */

    if (status != asynSuccess) {
        printf("%s ERROR: Can't register port\n", functionName);
        return(asynError);
    }

    /* Create asynUser for debugging */
    pPvt->pasynUser = pasynManager->createAsynUser(0, 0);
}
```

asynDriver

```
pInterfaces = &pPvt->asynStdInterfaces;

/* Initialize interface pointers */
pInterfaces->common.pinterface      = (void *)&ifaceCommon;
pInterfaces->drvUser.pinterface     = (void *)&ifaceDrvUser;
pInterfaces->octet.pinterface       = (void *)&ifaceOctet;
pInterfaces->int32.pinterface        = (void *)&ifaceInt32;
pInterfaces->float64.pinterface     = (void *)&ifaceFloat64;
pInterfaces->genericPointer.pinterface = (void *)&ifaceGenericPointer;

/* Define which interfaces can generate interrupts */
pInterfaces->octetCanInterrupt      = 1;
pInterfaces->int32CanInterrupt      = 1;
pInterfaces->float64CanInterrupt    = 1;
pInterfaces->genericPointerCanInterrupt = 1;

status = pasynStandardInterfacesBase->initialize(portName, pInterfaces,
                                                pPvt->pasynUser, pPvt);
if (status != asynSuccess) {
    printf("%s ERROR: Can't register interfaces: %s.\n",
          functionName, pPvt->pasynUser->errorMessage);
    return(asynError);
}
...
}
```

Standard Interpose Interfaces

asynInterposeEos

This can be used to simulate EOS processing for asynOctet if the port driver doesn't provide EOS support. If an EOS is specified it looks for the eos on each read. It is started by the shell command:

```
asynInterposeEosConfig port addr processEosIn processEosOut
```

where

- port is the name of the port.
- addr is the address
- processEosIn (0,1) means (do not, do) implement eosIn commands.
- processEosOut (0,1) means (do not, do) implement eosOut commands.

This command should appear immediately after the command that initializes a port. Some drivers provide configuration options to call this automatically.

asynInterposeFlush

This can be used to simulate flush processing for asynOctet if the port driver doesn't provide support for flush. It just reads and discards characters until no more characters arrive before timeout seconds have occurred. It is started by the shell command:

```
asynInterposeFlushConfig port addr timeout
```

where

asynDriver

- port is the name of the port.
- addr is the address
- timeout is the time to wait for more characters

this command should appear immediately after the command that initializes a port

Generic Device Support for EPICS records

Generic device support is provided for standard EPICS records. This support should be usable for a large class of low level register based drivers. For complicated devices other support is required. This release provides the following:

- devAsynInt32 - support for drivers that implement interface asynInt32
- devAsynInt32TimeSeries - waveform record support for drivers that implement callbacks on interface asynInt32
- devAsynInt8Array - support for drivers that implement interface asynInt8Array
- devAsynInt16Array - support for drivers that implement interface asynInt16Array
- devAsynInt32Array - support for drivers that implement interface asynInt32Array
- devAsynUInt32Digital - support for drivers that implement interface asynUInt32Digital
- devAsynFloat64 - support for drivers that implement interface asynFloat64
- devAsynFloat64TimeSeries - waveform record support for drivers that implement callbacks on interface asynFloat64
- devAsynFloat32Array - support for drivers that implement interface asynFloat32Array
- devAsynFloat64Array - support for drivers that implement interface asynFloat64Array
- devAsynOctet - support for drivers that implement interface asynOctet
- devEpics - This is just a single file devEpics.dbd that includes the dbd files for the above support.
- asynEpicsUtils.c - This provides utility functions. parseLink(), parseLinkMask() and parseLinkFree() parse record the record INP and OUT links described below. asynStatusToEpicsAlarm() converts asynStatus enum values to EPICS record STAT and SEVR values setting record alarms.

The support uses the following conventions for DTYP and INP. OUT fields are the same as INP.

```
field(DTYP, "asynXXX")
field(INP, "@asyn(portName, addr, timeout) drvParams")
or
field(INP, "@asynMask(portName, addr, mask, timeout) drvParams")
```

where

- XXX - The name of the type of interface supported.
- portName - The name of the port.
- addr - The address. If addr is not specified the default is 0.
- mask - This is for devAsynUInt32Digital. It is also used by devAsynInt32 to specify the number of bits of the hardware device for drivers that do not support getBounds().
- timeout - The timeout value for asynUser.timeout. If not specified the default is 1.0.
- drvParams - This is passed to the low level driver via the asynDrvUser interface. It is optional.

For example:

```
field(DTYP, "asynInt32")
field(INP, "@asyn(portA, 0, .1) thisIsForDriver")
```


asynManager interrupts and EPICS device support

All of the device support files can call `registerInterruptUser` for input records. The callback is used in one of two ways:

- Input Records except Average and TimeSeries

It is used to support `SCAN = "I/O Intr"`.

- Input records that are averaged, i.e. `asynInt32Average` or `asynFloat64Average`.

These records are normally scanned periodically. The `registerInterruptUser` callback is used to calculate an average value between record processes. If the record is processed before new data have arrived (`numAverage==0`) the record is set to `UDF/INVALID`, `UDF` is set to `TRUE`, and the value is left unchanged.

- Input records that are waveform time series, i.e. `asynInt32TimeSeries` or `asynFloat64TimeSeries`.

These records are normally scanned periodically. The `registerInterruptUser` callback is used to append values to the time series.

Initial values of output records

The device support for output records on register based interfaces (`bo`, `mbbo`, `ao`, `longout`) does an initial `read()` of the value from the driver in `init_record`. If this `read()` returns `asynSuccess` then the record value is set to the value returned from `read()`. If `read()` returns anything other than `asynSuccess` then the record value is not modified. This mechanism supports "bumpless reboots" where the initial value of output records will match the current value of the hardware when the IOC starts. Drivers should only return `asynSuccess` from the `read()` function if the value is known to be valid. Note that this value read from the device will replace the value in the database when `iocInit` begins. However, the value read from the device may in turn be replaced by any value from `save/restore`, because the auto restore happens later in `iocInit`.

Enum values for bi, bo, mbbi, and mbbo records

Beginning in asyn R4-19 support was added for asyn port drivers to control the values of the enum strings, enum values and enum severities in `bi`, `bo`, `mbbi`, and `mbbo` records. This is implemented in the `asynInt32` and `asynUInt32Digital` device support as follows:

- In the device support `init_record` function the device support attempts to find the `asynEnum` interface in the driver. If it is found then the driver calls `pasynEnumSyncIO->read()` to read the current values of the enums from the driver. If the `read()` returns `asynSuccess` then the enum fields are set to the values returned by the driver. If the `asynEnum` interface is not supported, or if `read()` returns anything except `asynSuccess` then the enum fields are not modified.
- Device support registers for callbacks on the `asynEnum` interface. Drivers can make callbacks to dynamically change the values of enums at run-time. For example, changing the gain of an ADC might change the allowed choices for the speed, etc. Device support calls `db_post_events(pr, &pr->val, DBE_PROPERTY)` when the enum fields change. This notifies clients that the enum values have changed. Older clients like `medm` and `edm` will not change the enum widgets until the window is closed and reopened, but newer clients like `CSS` should dynamically change the enum widgets.

Time stamps

Beginning in asyn R4-20 support was added for asyn port drivers to set the TIME field of input records. This is done by setting the TSE field of the record to "-2" and setting the desired value into the timestamp field of the pasynUser structure referred to in the device read method or interrupt callback.

Beginning in asyn R4-22 the timestamp support functions were added to asynManager to update, get and set the most recent timestamp for the port in asynManager. Support was also added for user-supplied timestamp source functions. Timestamp support was also added to asynPortDriver for the base-class read functions and callback functions.

asynInt32 device support

The following support is available:

```
device(ai, INST_IO, asynAiInt32, "asynInt32")
device(ai, INST_IO, asynAiInt32Average, "asynInt32Average")
device(ao, INST_IO, asynAoInt32, "asynInt32")
device(bi, INST_IO, asynBiInt32, "asynInt32")
device(bo, INST_IO, asynBoInt32, "asynInt32")
device(mbbi, INST_IO, asynMbbiInt32, "asynInt32")
device(mbbo, INST_IO, asynMbboInt32, "asynInt32")
device(longin, INST_IO, asynLiInt32, "asynInt32")
device(longout, INST_IO, asynLoInt32, "asynInt32")
```

devAsynInt32.c provides EPICS device support for drivers that implement interface asynInt32.

For ai and ao records either of the following specifications for the INP and OUT fields can be used:

```
field(INP, "@asyn(portName, addr, timeout) drvParams")
or
field(INP, "@asynMask(portName, addr, nbits, timeout) drvParams")
```

The asynMask format allows device support to work with drivers that cannot return meaningful values from getBounds() because they do not know the range of the device. This is true, for example, of Modbus ADCs. The nbits parameter is defined as follows:

nbits > 0 Device is unipolar with a range from 0 to $2^{nbits}-1$

nbits < 0 Device is bipolar with a range from $-2^{(abs(nbits)-1)}$ to $2^{((abs(nbits)-1)-1)}$
 Values read with the asynInt32 interface will be sign extended
 using the sign bit (e.g. bit $abs(nbits)-1$ starting at bit 0).

- aiRecord

A value is given to rval. Linear conversions are supported if the driver implements getBounds, or if nbits is specified as explained above.

- ◆ asynInt32 - SCAN "I/O Intr" is supported. If the record is "I/O Intr" scanned then when the registerInterruptUser callback is called, it saves the value and calls scanIoRequest. When the record is processed the saved value is put into rval. If the record is not "I/O Intr" scanned then each time the record is processed, a new value is read via a call to pasynInt32->read.

asynDriver

- ◆ asynInt32Average - The registerInterruptUser callback adds the new value to a sum and also increments the number of samples. When the record is processed the average is computed and the sum and number of samples is set to zero.

- aoRecord

rval is written. Linear conversions are supported if the driver properly implements getBounds, or if nbits is specified as explained above.

- longinRecord

A value is given to val. Each time the record is processed a new value is read. SCAN "I/O Intr" is supported similar to aiRecord.

- longoutRecord

val is written.

- biRecord

A value is given to rval. The mask field in the record is not used. Each time the record is processed a new value is read. SCAN "I/O Intr" is supported similar to aiRecord.

- boRecord

rval is written. The mask field in the record is not used.

- mbbiRecord

A value is given to rval. mask is computed from nobt and shft. Each time the record is processed a new value is read. SCAN "I/O Intr" is supported similar to aiRecord.

- mbboRecord

rval is written. mask is computed from nobt and shft.

Analog Input Example Records

```
record(ai, "aiInt32") {
    field(SCAN, "I/O Intr")
    field(DTYP, "asynInt32")
    field(INP, "@asyn($ (port), $ (addr)) ")
    field(EGUF, "10.0")
    field(EGUL, "-10.0")
    field(PREC, "3")
}
# This record is for a 12-bit bipolar ADC for a driver that does not
# support getBounds()
record(ai, "aiInt32") {
    field(SCAN, "I/O Intr")
    field(DTYP, "asynInt32")
    field(INP, "@asynMask($ (port), $ (addr), -12) ")
    field(EGUF, "10.0")
    field(EGUL, "-10.0")
    field(PREC, "3")
}
record(ai, "aiInt32Average") {
    field(SCAN, "10 second")
    field(DTYP, "asynInt32Average")
    field(INP, "@asyn($ (port), $ (addr)) ")
    field(EGUF, "10.0")
    field(EGUL, "-10.0")
}
```

```

    field(PREC, "3")
}

```

Analog Output Example Record

```

record(ao, "aoInt32") {
    field(DTYP, "asynInt32")
    field(OUT, "@asyn($ (port), $ (addr)) ")
    field(EGUF, "10.0")
    field(EGUL, "-10.0")
    field(PREC, "3")
}

```

Long Input Example Records

```

record(longin, "liInt32") {
    field(SCAN, "I/O Intr")
    field(DTYP, "asynInt32")
    field(INP, "@asyn($ (port), $ (addr)) ")
}

```

Long Output Example Record

```

record(longout, "loInt32") {
    field(DTYP, "asynInt32")
    field(OUT, "@asyn($ (port), $ (addr)) ")
}

```

Multibit Binary Input Example Records

```

record(mbbi, "mbbiInt32") {
    field(SCAN, "I/O Intr")
    field(DTYP, "asynInt32")
    field(INP, "@asyn($ (port), $ (addr)) ")
    field(NOBT, "2")
    field(SHFT, "2")
    field(ZRST, "zeroVal")
    field(ONST, "oneVal")
    field(TWST, "twoVal")
    field(THST, "threeVal")
}

```

Multibit Binary Output Example Record

```

record(mbbo, "mbboInt32") {
    field(DTYP, "asynInt32")
    field(OUT, "@asyn($ (port), $ (addr)) ")
    field(NOBT, "2")
    field(SHFT, "16")
    field(ZRST, "zeroVal")
    field(ONST, "oneVal")
    field(TWST, "twoVal")
    field(THST, "threeVal")
}

```

asynIntXXXArray device support (XXX=8, 16 or 32)

The following support is available:

```
device (waveform, INST_IO, asynIntXXXArrayWfIn, "asynIntXXXArrayIn")
device (waveform, INST_IO, asynIntXXXArrayWfOut, "asynIntXXXArrayOut")
```

devAsynIntXXXArray.c provides EPICS device support for drivers that implement interface asynIntXXXArray. It has support for both reading and writing a waveform. SCAN "I/O Intr" is supported similar to the aiRecord in devAsynInt32 device support.

asynXXXTimeSeries device support (XXX=Int32 or Float64)

The following support is available:

```
device (waveform, INST_IO, asynInt32TimeSeries, "asynInt32TimeSeries")
device (waveform, INST_IO, asynFloat64TimeSeries, "asynFloat64TimSeries")
```

devAsynXXXTimeSeries.c provides EPICS device support to collect a time series of values into a waveform record. It works with drivers that implement callbacks on the asynInt32 or asynFloat64 interfaces. This permits more rapid and efficient acquisition of values from a driver than can be obtained using record support and database operations. The waveform record RARM field is used to control acquisition as follows:

- RARM=1 Erase and start acquisition, i.e. clear the waveform record to 0, set NORD=0, BUSY=1 and enable callbacks.
- RARM=2 Stop acquisition, set BUSY=0.
- RARM=3 Start acquisition (set BUSY=1) without clearing the waveform or setting NORD=0.

devAsynUInt32Digital

The following support is available:

```
device (bi, INST_IO, asynBiUInt32Digital, "asynUInt32Digital")
device (bo, INST_IO, asynBoUInt32Digital, "asynUInt32Digital")
device (longin, INST_IO, asynLiUInt32Digital, "asynUInt32Digital")
device (longout, INST_IO, asynLoUInt32Digital, "asynUInt32Digital")
device (mbbi, INST_IO, asynMbbiUInt32Digital, "asynUInt32Digital")
device (mbbo, INST_IO, asynMbboUInt32Digital, "asynUInt32Digital")
device (mbbiDirect, INST_IO, asynMbbiDirectUInt32Digital, "asynUInt32Digital")
device (mbboDirect, INST_IO, asynMbboDirectUInt32Digital, "asynUInt32Digital")
```

devAsynUInt32Digital.c provides EPICS device support for drivers that implement interface asynUInt32Digital. The INP or OUT field must define asynMask. The mask specified in the argument to asynMask is used in the calls to asynUInt32Digital methods. In addition it is used to set the mask fields in bi and bo records and the mask and shft fields in mbbi, mbbo, mbbiDirect, and mbboDirect records.

- biRecord

A value is given to rval. asynInt32 - SCAN "I/O Intr" is supported. If the record is "I/O Intr" scanned then when the registerInterruptUser callback is called, it saves the value and calls scanIoRequest. When the record is processed the saved value is put into rval. If the record is not "I/O Intr" scanned then each time

asynDriver

the record is processed, a new value is read via a call to `pasynUInt32Digital->read`.

- **boRecord**

rval is written.

- **longinRecord**

A value is given to val. Each time the record is processed a new value is read. SCAN "I/O Intr" is supported similar to aiRecord.

- **longoutRecord**

val is written.

- **mbbiRecord**

A value is given to rval. Each time the record is processed a new value is read. SCAN "I/O Intr" is supported similar to aiRecord.

- **mbboRecord**

rval is written.

- **mbbiDirectRecord**

A value is given to rval. Each time the record is processed a new value is read. SCAN "I/O Intr" is supported similar to aiRecord.

- **mbboDirectRecord**

rval is written.

Binary Input Example Record

```
record(bi, "biUInt32Bit0") {
    field(SCAN, "I/O Intr")
    field(DTYP, "asynUInt32Digital")
    field(INP, "@asynMask( $(port) , 0, 0x1 , 1.0) ")
    field(ZNAM, "zero")
    field(ONAM, "one")
}
```

Binary Output Example Record

```
record(bo, "boUInt32Bit2") {
    field(DTYP, "asynUInt32Digital")
    field(OUT, "@asynMask( $(port) , 0, 0x4 , 1.0) ")
    field(ZNAM, "zero")
    field(ONAM, "one")
}
```

Long Input Example Record

```
record(longin, "liUInt32") {
    field(SCAN, "I/O Intr")
    field(DTYP, "asynUInt32Digital")
    field(INP, "@asynMask( $(port) , 0, 0xffffffff , 1.0) ")
}
```

Long Output Example Record

```
record(longout, "loUInt32") {
    field(DTYP, "asynUInt32Digital")
    field(INP, "@asynMask( $(port) , 0, 0xffffffff , 1.0) ")
}
```

Multibit Input Example Record

```
record(mbbi, "mbbiUInt32") {
    field(SCAN, "I/O Intr")
    field(DTYP, "asynUInt32Digital")
    field(INP, "@asynMask( digital , 0, 0x3 , 1.0) ")
    field(ZRST, "zero")
    field(ONST, "one")
    field(TWST, "two")
    field(THST, "three")
    field(ZRVL, "0x0")
    field(ONVL, "0x1")
    field(TWVL, "0x2")
    field(THVL, "0x3")
}
```

Multibit Output Example Record

```
record(mbbo, "mbboUInt32") {
    field(DTYP, "asynUInt32Digital")
    field(OUT, "@asynMask( digital , 0, 0x7 , 1.0) ")
    field(ZRST, "zero")
    field(ONST, "one")
    field(TWST, "two")
    field(THST, "three")
    field(FRST, "four")
    field(FVST, "five")
    field(SXST, "six")
    field(SVST, "seven")
    field(ZRVL, "0x0")
    field(ONVL, "0x1")
    field(TWVL, "0x2")
    field(THVL, "0x3")
    field(FRVL, "0x4")
    field(FVVL, "0x5")
    field(SXVL, "0x6")
    field(SVVL, "0x7")
}
```

devAsynFloat64 device support

The following support is available:

```
device(ai, INST_IO, asynAiFloat64, "asynFloat64")
device(ai, INST_IO, asynAiFloat64Average, "asynFloat64Average")
device(ao, INST_IO, asynAoFloat64, "asynFloat64")
```

devAsynFloat64.c provides EPICS device support for drivers that implement interface asynFloat64.

- aiRecord

asynDriver

A value is given to val.

- ◆ asynFloat64 - SCAN "I/O Intr" is supported. If the record is "I/O Intr" scanned then when the registerInterruptUser callback is called, it saves the value and calls scanIoRequest. When the record is processed the saved value is put into val. If the record is not "I/O Intr" scanned then each time the record is processed, a new value is read via a call to pasynFloat64->read.
- ◆ asynFloat64Average - The registerInterruptUser callback adds the new value to a sum and also increments the number of samples. When the record is processed the average is computed and the sum and number of samples is set to zero.
- aoRecord

val is written.

asynFloatXXXArray device support (where XXX=32 or 64)

The following support is available:

```
device (waveform, INST_IO, asynFloatXXXArrayWfIn, "asynFloatXXXArrayIn")
device (waveform, INST_IO, asynFloatXXXArrayWfOut, "asynFloatXXXArrayOut")
```

devAsynFloatXXXArray.c provides EPICS device support for drivers that implement interface asynFloatXXXArray. It has support for both reading and writing a waveform. SCAN "I/O Intr" is supported similar to the aiRecord in devAsynInt32 device support.

octet device support

The following support is available:

```
device (stringin, INST_IO, asynSiOctetCmdResponse, "asynOctetCmdResponse")
device (stringin, INST_IO, asynSiOctetWriteRead, "asynOctetWriteRead")
device (stringin, INST_IO, asynSiOctetRead, "asynOctetRead")
device (stringout, INST_IO, asynSoOctetWrite, "asynOctetWrite")
device (waveform, INST_IO, asynWfOctetCmdResponse, "asynOctetCmdResponse")
device (waveform, INST_IO, asynWfOctetWriteRead, "asynOctetWriteRead")
device (waveform, INST_IO, asynWfOctetRead, "asynOctetRead")
device (waveform, INST_IO, asynWfOctetWrite, "asynOctetWrite")
```

Support for drivers that implement interface asynOctet. The support is for stringin/stringout and waveform records. The waveform support is similar to the string support. The waveform records must define FTVL to be CHAR or UCHAR, i.e. it must be an array of octets. The waveform provides the following features not provided by the string support:

- unlimited size - string records hold a maximum of 40 characters.
- non ascii - Thus arbitrary octet arrays are supported.

Four types of support are provided:

- CmdResponse The INP field is of the form:

```
field(INP, "@asyn(portName, addr, timeout) cmd")
```


asynDriver

During record initialization, cmd is converted by dbTranslateEscape. The resultant string is the command to send to the device. When the record is processed the command is sent to the device and the response read into the record.

- WriteRead The INP field is of the form:

```
field(INP, "@asyn(portName, addr, timeout) pvname")
```

pvname must refer to a field in a record in the same IOC. During record initialization the pvname is located. When the record is processed dbGet is called to read the current value of pvname. This value is sent to the device. A read is then issued and the result stored in the record. For asynSiOctetWriteRead, the value obtained from pvname is passed through dbTranslateEscape before sending it. For asynWfOctetWriteRead it is not passed through dbTranslateEscape.

- Write The INP(OUT) field is of the form:

```
field(INP, "@asyn(portName, addr, timeout) drvUser")
```

drvUser is information that is passed to the portDriver if it implements interface asynDrvUser. When the record is processed the value stored in the record is sent to the device.

- Read The INP field is of the form:

```
field(INP, "@asyn(portName, addr, timeout) drvUser")
```

drvUser is information that is passed to the portDriver if it implements interface asynDrvUser. When the record is processed a read request is made. The result is read into the record.

Record alarms

The generic EPICS device support sets the record alarm status and severity when errors occur. For records that do not use callbacks (not SCAN=I/O Intr or asynXXXAverage or asynXXXTimeSeries) the status information is passed from the driver to device support in the asynStatus return of the interface function call, e.g. pasynInt32->read(). The driver maps the asynStatus values to the record STAT and SEVR values using the function pasynEpicsUtils->asynUserToEpicsAlarm(). The SEVR field is currently always set to INVALID_ALARM for any error. The STAT field is set using following mapping:

```
asynSuccess = epicsAlarmNone
asynTimeout = epicsAlarmTimeout
asynOverflow = epicsAlarmHWLimit
asynError = epicsAlarmRead or epicsAlarmWrite
asynDisconnected = epicsAlarmComm
asynDisabled = epicsAlarmDisable
```

For records that use callbacks, the status information is passed from the driver to device support using the pasynUser->auxStatus field in the pasynUser that is passed in the callback. This feature was added in asyn R4-19. Prior to that release it was not possible for drivers to control the alarm state of records that used callbacks. Drivers should set pasynUser->auxStatus to asynSuccess for normal operation and to another value to indicate a problem. The same mapping described above is used to control the values of STAT and SEVR.

asynRecord: Generic EPICS Record Support

A special record type asynRecord is provided. Details are described in [asynRecord](#). This section provides a brief description of how to use it.

Each IOC can load one or more instances of asynRecord. An example is:

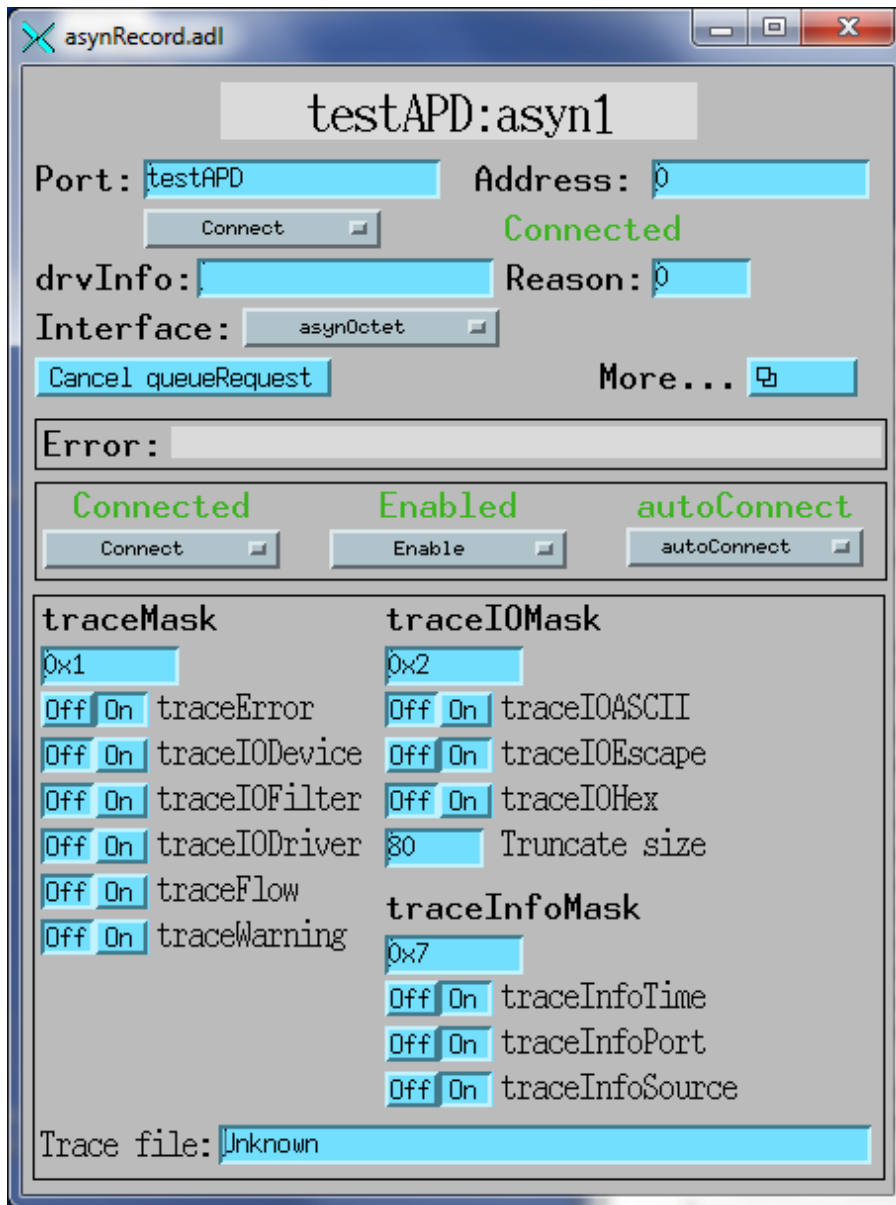
```
cd $(ASYN)
dbLoadRecords("db/asynRecord.db", "P=asyn,R=Test,PORT=L0,ADDR=15,IMAX=0,OMAX=0")
```

The example creates a record with name "asynTest" (formed from the concatenation of the P and R macros) that will connect to port "L0" and addr 15. After the ioc is started, it is possible to change PORT and/or ADDR. Thus, a single record can be used to access all asyn devices connected to the IOC. Multiple records are only needed if one or more devices need a dedicated record.

An medm display is available for accessing an asynRecord. It is started as follows:

```
cd <asyn>/medm
medm -x -macro "P=asyn,R=Test" asynRecord.adl
```

The following medm display appears.



Example

The following reads from a device via octet messages:

```
#include <asynDriver.h>
...
#define BUFFER_SIZE 80
typedef struct myData {
    epicsEventId done;
    asynOctet      *pasynOctet;
    void           *drvPvt;
    char           buffer[BUFFER_SIZE];
}myData;

static void queueCallback(asynUser *pasynUser) {
    myData      *pmydata = (myData *)pasynUser->userPvt;
    asynOctet   *pasynOctet = pmydata->pasynOctet;
    void        *drvPvt = pmydata->drvPvt;
```

Example

asynDriver

```
asynStatus status;
int writeBytes, readBytes;
int eomReason;

asynPrint(pasynUser, ASYN_TRACE_FLOW, "queueCallback entered\n");
status = pasynOctet->write(drvPvt, pasynUser, pmydata->buffer,
    strlen(pmydata->buffer), &writeBytes);
if(status!=asynSuccess) {
    asynPrint(pasynUser, ASYN_TRACE_ERROR,
        "queueCallback write failed %s\n", pasynUser->errorMessage);
} else {
    asynPrintIO(pasynUser, ASYN_TRACEIO_DEVICE,
        pmydata->buffer, strlen(pmydata->buffer),
        "queueCallback write sent %d bytes\n", writeBytes);
}
status = pasynOctet->read(drvPvt, pasynUser, pmydata->buffer,
    BUFFER_SIZE, &readBytes, &eomReason);
if(status!=asynSuccess) {
    asynPrint(pasynUser, ASYN_TRACE_ERROR,
        "queueCallback read failed %s\n", pasynUser->errorMessage);
} else {
    asynPrintIO(pasynUser, ASYN_TRACEIO_DEVICE,
        pmydata->buffer, BUFFER_SIZE,
        "queueCallback read returned: retlen %d eomReason 0x%x data %s\n",
        readBytes, eomReason, pmydata->buffer);
}
epicsEventSignal(pmydata->done);
}

static void asynExample(const char *port, int addr, const char *message)
{
    myData *pmyData;
    asynUser *pasynUser;
    asynStatus status;
    asynInterface *pasynInterface;

    pmyData = (myData *)pasynManager->memMalloc(sizeof(myData));
    memset(pmyData, 0, sizeof(myData));
    strcpy(pmyData->buffer, message);
    pasynUser = pasynManager->createAsynUser(queueCallback, 0);
    pasynUser->userPvt = pmyData;
    status = pasynManager->connectDevice(pasynUser, port, addr);
    if(status!=asynSuccess) {
        printf("can't connect to serialPort1 %s\n", pasynUser->errorMessage);
        exit(1);
    }
    pasynInterface = pasynManager->findInterface(
        pasynUser, asynOctetType, 1);
    if(!pasynInterface) {
        printf("%s driver not supported\n", asynOctetType);
        exit(-1);
    }
    pmyData->pasynOctet = (asynOctet *)pasynInterface->pinterface;
    pmyData->drvPvt = pasynInterface->drvPvt;
    pmyData->done = epicsEventCreate(epicsEventEmpty);
    status = pasynManager->queueRequest(pasynUser, asynQueuePriorityLow, 0.0);
    if(status) {
        asynPrint(pasynUser, ASYN_TRACE_ERROR,
            "queueRequest failed %s\n", pasynUser->errorMessage);
    }
    epicsEventWait(pmyData->done);
    status = pasynManager->freeAsynUser(pasynUser);
}
```

asynDriver

```
if(status) {
    asynPrint (pasynUser, ASYN_TRACE_ERROR,
              "freeAsynUser failed %s\n", pasynUser->errorMessage);
}
epicsEventDestroy (pmyData->done);
pasynManager->memFree (pasynUser->userPvt, sizeof (myData));
}
```

The flow of control is as follows:

1. A port driver calls registerPort. This step is not shown in the above example.
2. asynExample allocates myData and an asynUser.
3. asynExample connects to a device and to the asynOctet interface for the port driver.
4. When it is ready to communicate with the driver it calls queueRequest.
5. queueCallback is called. It calls the port driver's write and read methods.

Test Application

The asynDriver distribution includes code to test asynDriver. It is also an example of how to interface to asynManager. The example resides in <top>/testApp and contains the following components:

```
Db/
  test.db
  testBlock.db
adl/
  test.adl
src/
  devTestBlock.dbd
  echoDriver.c
  addrChangeDriver.c
  devTestBlock.c
  interposeInterface.c
```

echoDriver is a port driver that echos messages it receives. It implements asynCommon and asynOctet. When asynOctet:write is called it saves the message. When asynOctet:read is called, the saved message is returned and the message is flushed. echoDriverInit has an argument that determines if it acts like a multiDevice or a single device port driver.

An instance of echoDriver is started via the iocsh command:

```
echoDriverInit (portName, delay, noAutoConnect, multiDevice)
```

where

- portName - the port name for this instance.
- delay - The time to delay after a read or write. If delay is 0 then echoDriver registers as a synchronous port driver, i.e. bit ASYN_CANBLOCK of attributes is not set. If delay>0 then ASYN_CANBLOCK is set.
- noAutoConnect - Determines initial setting for port.
- multiDevice - If true then it supports two devices with addresses 0 and 1. If false it does not set ASYN_MULTIDEVICE, i.e. it only supports a single device.

addrChangeDriver is a multidevice driver that is an asynUser of another port driver. In the example application it

asynDriver

connects to echoDriver. An example where this technique might be used is a port driver for mult-drop serial that connects to a standard serial port.

An instance of addrChangeDriver is started via the iocsh commandL:

```
addrChangeDriverInit (portName, lowerPort, addr)
```

where

- portName - the port name for this instance.
- lowerPort - the port to which addrChangeDriver connects
- addr - The address to which addrChangeDriver connects

devTestBlock is device support that tests blockProcessCallback. It has device support for stringin records. The INP field has the syntax:

```
field(INP, "@asyn(port, addr, timeout) pvname)
```

where:

- asyn(port,addr,timeout) is same as for devEpics support.
- pvname - The name of a record in the same ioc.

When the stringin record is processed the following occurs.

- When process is called and PACT is :
 - ◆ TRUE - then it just returns to record support.
 - ◆ FALSE - It does what follows.
- When processing starts the state is stateIdle.
- blockProcessCallback is called.
- callbackRequestDelayed is called (.1 second delay). The callback calls queueRequest.
- When processCallback is called it does the following:
 - ◆ calls unblockProcessCallback
 - ◆ If state is stateIdle
 - ◇ Calls dbGet to get a string value from pvname
 - ◇ calls pasynOctet->write to send the string
 - ◇ sets state to stateWrite
 - ◇ Calls blockProcessCallback
 - ◇ callbackRequestDelayed is called The callback calls queueRequest.
 - ◇ completes. processCallback will be called again
 - ◆ If state is stateWrite
 - ◇ calls pasynOctet->read and puts the value in VAL.
 - ◇ Sets state = stateIdle
 - ◇ requests the the record be processed. This time PACT will be TRUE

test.db is a template containing three records: a calc record, which forward links to a stringout record which forward links to a stringin record. The stringOut record attaches to the device support supplied by asynOctetWriteRead.c. When the calcRecord is processed the following happens:

- The calcRecord acts as a counter that overflows when the count reaches 10. After counting to forward links ti the stringIn record.

asynDriver

- The string in record gets the current value of the counter converted to s character string and forward links to the stringOut record.
- The stringOut record gets the value from the stringIn record and calls queueRequest. The record is left with PACT true.
- The processCallback calls pasynOctet->write passing the value obtained from the stringIn record. The then does a pasynOctet->read. When this completes it asks for the record to complete processing.
- The stringOut record completes processing.

testBlock.db is a template similar to test.db except that it is attached to device support testBlock instead of asynOctetWriteRead.

Executing "medm -x test.adl" produces the display:

The screenshot shows a Medm display window titled "test.adl". The display is organized into several sections:

- A is single device port:** Contains a control panel for "testClient_PA_A0" with buttons for enable/disable, auto/noAuto, connect/disconnect, and a "Passive" status indicator.
- B is two device port:** Contains three control panels for "testClient_PB_A-1", "testClient_PB_A0", and "testClient_PB_A1", each with similar control buttons and a "Passive" status indicator.
- MA is two device port connected to A:** Contains three control panels for "testClient_PMA_A-1", "testClient_PMA_A0", and "testClient_PMA_A1", each with similar control buttons and a "Passive" status indicator.
- blockProcessCallback test:** Contains four control panels for "testBlock_PB_A0", "testBlock_PB_A1", "testBlockAll_PB_A0", and "testBlockAll_PB_A1", each with a "Passive" status indicator. The text "blockAll" is displayed to the right of the last two panels.

It assumes that an ioc has been started via:

asynDriver

```
cd <top>/iocBoot/iocTest
../../bin/solaris-sparc/test st.cmd
```

This starts two versions of echoDriver as port "A" and "B". port A acts as single device port. port B acts as a multiDevice port that has two devices. For each of the three possible devices, the st.cmd file starts up two sets of records from test.db The st.cmd file also loads a set of records from asynTest.db for port A and for port B and for each of the two devices attached to port B. It also loads a set of records from asynRecord.db. It starts one version of addrChangeDriver which connects to port A.

It loads six versions of test.db and four versions of testBlock.db The test.adl file attaches to these database records.

asynGpib

GPIB has additional features that are not supported by asynCommon and asynOctet. asynGpib defines two interfaces.

- asynGpib - This is the interface that device support calls. It provides the following:
 - ◆ A set of GPIB specific methods that device support can call.
 - ◆ Code that handles generic GPIB functions like SRQ polling.
 - ◆ A registerPort method which is called by GPIB port drivers.
- asynGpibPort - A set of methods implemented by GPIB drivers

asynGpibDriver.h

asynGpibDriver.h contains the following definitions:

```
/* GPIB Addressed Commands*/
#define IBGTL "\x01" /* Go to local */
#define IBSDC "\x04" /* Selective Device Clear */
#define IBGET "\x08" /* Group Execute Trigger */
#define IBTCT "\x09" /* Take Control */

/* GPIB Universal Commands*/
#define IBDCLE 0x14 /* Device Clear */
#define IBLLO 0x11 /* Local Lockout */
#define IBSPEN 0x18 /* Serial Poll Enable */
#define IBSPDN 0x19 /* Serial Poll Disable */
#define IBUNT 0x5f /* Untalk */
#define IBUNL 0x3f /* Unlisten */

/* Talk, Listen, Secondary base addresses */
#define TADBASE 0x40 /* offset to GPIB listen address 0 */
#define LADBASE 0x20 /* offset to GPIB talk address 0 */
#define SADBASE 0x60 /* offset to GPIB secondary address 0 */

#define NUM_GPIB_ADDRESSES 32
#include "asynDriver.h"
#include "asynInt32.h"
#define asynGpibType "asynGpib"
/* GPIB drivers */
typedef struct asynGpib asynGpib;
typedef struct asynGpibPort asynGpibPort;
/*asynGpib defines methods called by gpib aware users*/
struct asynGpib{
    /*addressedCmd,...,ren are just passed to device handler*/
```


asynDriver

```
asynStatus (*addressedCmd) (void *drvPvt, asynUser *pasynUser,
    const char *data, int length);
asynStatus (*universalCmd) (void *drvPvt, asynUser *pasynUser, int cmd);
asynStatus (*ifc) (void *drvPvt, asynUser *pasynUser);
asynStatus (*ren) (void *drvPvt, asynUser *pasynUser, int onOff);
/* The following are implemented by asynGpib */
asynStatus (*pollAddr) (void *drvPvt, asynUser *pasynUser, int onOff);
/* The following are called by low level gpib drivers */
/* srqHappened is passed the pointer returned by registerPort */
void *(*registerPort) (
    const char *portName,
    int attributes, int autoConnect,
    asynGpibPort *pasynGpibPort, void *asynGpibPortPvt,
    unsigned int priority, unsigned int stackSize);
void (*srqHappened) (void *asynGpibPvt);
};
epicsShareExtern asynGpib *pasynGpib;

struct asynGpibPort {
    /* asynCommon methods */
    void (*report) (void *drvPvt, FILE *fd, int details);
    asynStatus (*connect) (void *drvPvt, asynUser *pasynUser);
    asynStatus (*disconnect) (void *drvPvt, asynUser *pasynUser);
    /* asynOctet methods passed through from asynGpib */
    asynStatus (*read) (void *drvPvt, asynUser *pasynUser,
        char *data, int maxchars, int *nbytesTransferred,
        int *eomReason);
    asynStatus (*write) (void *drvPvt, asynUser *pasynUser,
        const char *data, int numchars, int *nbytesTransferred);
    asynStatus (*flush) (void *drvPvt, asynUser *pasynUser);
    asynStatus (*setEos) (void *drvPvt, asynUser *pasynUser,
        const char *eos, int eoslen);
    asynStatus (*getEos) (void *drvPvt, asynUser *pasynUser,
        char *eos, int eossize, int *eoslen);
    /* asynGpib methods passed through from asynGpib */
    asynStatus (*addressedCmd) (void *drvPvt, asynUser *pasynUser,
        const char *data, int length);
    asynStatus (*universalCmd) (void *drvPvt, asynUser *pasynUser, int cmd);
    asynStatus (*ifc) (void *drvPvt, asynUser *pasynUser);
    asynStatus (*ren) (void *drvPvt, asynUser *pasynUser, int onOff);
    /* asynGpibPort specific methods */
    asynStatus (*srqStatus) (void *drvPvt, int *isSet);
    asynStatus (*srqEnable) (void *drvPvt, int onOff);
    asynStatus (*serialPollBegin) (void *drvPvt);
    asynStatus (*serialPoll) (void *drvPvt, int addr, double timeout, int *status);
    asynStatus (*serialPollEnd) (void *drvPvt);
};
```

asynGpib

asynGpib describes the interface for device support code. It provides gpib specific functions like SRQ handling. It makes calls to asynGpibPort. asynGpib.c implements asynCommon and asynOctet. It supports asynInt32 by using the methods from asynInt32Base. asynInt32 is the way asynGpib reports SRQs to asynUsers.

An asynUser that wishes to receive SRQs calls pasynInt32->registerInterruptUser and must set asynUser.reason = ASYN_REASON_SIGNAL. Although most gpib controllers are multidevice drivers, the VXI11 standard allows for a controller (VXI-11.2) that attached to a single device, i.e. it is a single address port driver. For such controllers, the use must specify addr = 0 in order to use SRQs. Also see the vxi support below for more details.

asynGpib

addressedCmd	The request is passed to the low level driver.
universalCmd	The request is passed to the low level driver.
ifc	The request is passed to the low level driver.
ren	The request is passed to the low level driver.
pollAddr	Set SRQ polling on or off. onOff = (0,1) means (disable, enable) SRQ polling of specified address.
registerPort	Register a port. When asynGpib receives this request, it calls asynManager.registerPort.
srqHappened	Called by low level driver when it detects that a GPIB device issues an SRQ.

asynGpibPort

asynGpibPort is the interface that is implemented by gpib drivers, e.g. the VXI-11. It provides:

asynGpibPort

asynCommon methods	All the methods of asynCommon
asynOctet methods	All the methods of asynOctet
addressedCmd	Issue a GPIB addressed command.
universalCmd	Issue a GPIB universal command.
ifc	Issue a GPIB Interface Clear command.
ren	Issue a GPIB Remote Enable command
srqStatus	If return is asynSuccess then isSet is (0,1) if SRQ (is not, is) active. Normally only called by asynGpib.
srqEnable	Enable or disable SRQs. Normally only called by asynGpib.
serialPollBegin	Start of serial poll. Normally only called by asynGpib.
serialPoll	Poll the specified address and set status to the response. Normally only called by asynGpib.
serialPollEnd	End of serial poll. Normally only called by asynGpib.

Port Drivers

Local Serial Port

The drvAsynSerialPort driver supports devices connected to serial ports on the IOC.

Serial ports are configured with the drvAsynSerialPortConfigure and asynSetOption commands:

```
drvAsynSerialPortConfigure("portName", "ttyName", priority, noAutoConnect,
    noProcessEosIn)
asynSetOption("portName", addr, "key", "value")
```

where the arguments are:

- portName - The portName that is registered with asynGpib.

asynDriver

- `ttyName` - The name of the local serial port (e.g. `"/dev/ttyS0"`, `"COM1"`).
- `priority` - Priority at which the asyn I/O thread will run. If this is zero or missing, then `epicsThreadPriorityMedium` is used.
- `addr` - This argument is ignored since serial devices are configured with `multiDevice=0`.
- `noAutoConnect` - Zero or missing indicates that `portThread` should automatically connect. Non-zero if explicit connect command must be issued.
- `noProcessEos` If 0 then `asynInterposeEosConfig` is called specifying both `processEosIn` and `processEosOut`.

The `setEos` and `getEos` methods have no effect and return `asynError`. The `read` method blocks until at least one character has been received or until a timeout occurs. The `read` method transfers as many characters as possible, limited by the specified count. `asynInterposeEos` can be used to support EOS.

The following table summarizes the `drvAsynSerialPort` driver `asynSetOption` keys and values. When a serial port connects the current values are fetched.

Key	Value
<code>baud</code>	50 75 110 134 150 200 300 600 1200 2400 9600 ...
<code>bits</code>	8 7 6 5
<code>parity</code>	none even odd
<code>stop</code>	1 2
<code>clocal</code>	Y N
<code>crtscts</code>	N Y
<code>ixon</code>	N Y
<code>ixoff</code>	N Y
<code>ixany</code>	N Y

On some systems (e.g. Windows, Darwin) the driver accepts any numeric value for the baud rate, which must, of course be supported by the system hardware. On Linux the choices are limited to the values like B300, B9600, etc. which are defined in `/usr/include/bits/termios.h`.

The `clocal` and `crtscts` parameter names are taken from the POSIX `termios` serial interface definition. The `clocal` parameter controls whether the modem control lines (Data Terminal Ready, Carrier Detect/Received Line Signal Detect) are used (`clocal=N`) or ignored (`clocal=Y`). The `crtscts` parameter controls whether the hardware handshaking lines (Request To Send, Clear To Send) are used (`crtscts=Y`) or ignored (`crtscts=N`).

The `vxWorks` `sioLib` serial support does not provide support for modem control lines. It also uses `clocal` for what is actually `crtscts`. For `vxWorks` the standard serial support accepts both `clocal` and `crtscts` for `getOption` and `setOption`. `clocal=Y` implies `crtscts=N` and `clocal=N` implies `crtscts=Y`.

`ixon` controls XON/OFF flow control on output. If the IOC receives an XOFF character, it suspends output until an XON character is received.

`ixoff` controls XON/OFF flow control on input. The IOC sends XOFF and XON characters as necessary to prevent input from coming in faster than programs are reading it. The external device sending the input data must respond to an XOFF character by suspending transmission, and to an XON character by resuming transmission.

The `ixany` flag allows any input character to restart output when output has been suspended with the XOFF character. Otherwise, only the XON character restarts output. This flag is not available on all systems, including

WIN32.

vxWorks IOC serial ports may need to be set up using hardware-specific commands. Once this is done, the standard `drvAsynSerialPortConfigure` and `asynSetOption` commands can be issued. For example, the following example shows the configuration procedure for a port on a GreenSprings octal UART Industry-Pack module on a GreenSprings VIP616-01 carrier.

```
ipacAddVIP616_01 ("0x6000,B0000000")
tyGSOctalDrv(1)
tyGSOctalModuleInit("RS232", 0x80, 0, 0)
tyGSOctalDevCreate("/tyGS/0/0", 0, 0, 1000, 1000)
drvAsynSerialPortConfigure("L0", "/tyGS/0/0", 0, 0, 0)
asynSetOption("L0", 0, "baud", "9600")
```

TCP/IP or UDP/IP Port

The `drvAsynIPPort` driver supports devices which communicate over a TCP/IP or UDP/IP connection. A typical example is a device connected through an Ethernet/Serial converter box.

TCP/IP or UDP/IP connections are configured with the `drvAsynIPPortConfigure` command:

```
drvAsynIPPortConfigure ("portName", "hostInfo", priority, noAutoConnect,
    noProcessEos)
```

where the arguments are:

- `portName` - The portName that is registered with `asynManager`.
- `hostInfo` - The Internet host name, port number and optional IP protocol of the device (e.g. "164.54.9.90:4002", "serials8n3:4002", "serials8n3:4002 TCP" or "164.54.17.43:5186 udp"). If no protocol is specified, TCP will be used. Possible protocols are
 - ◆ TCP
 - ◆ UDP
 - ◆ UDP* — UDP broadcasts. The address portion of the argument must be the network broadcast address (e.g. "192.168.1.255:1234 UDP*").
 - ◆ HTTP — Like TCP but for servers which close the connection after each transaction.
 - ◆ COM — For Ethernet/Serial adapters which use the TELNET RFC 2217 protocol. This allows port parameters (speed, parity, etc.) to be set with subsequent `asynSetOption` commands just as for local serial ports. The default parameters are 9600-8-N-1 with no flow control.

If the `hostInfo` argument begins with the characters `unix://` the remainder of the argument is taken to be the name of a UNIX-domain stream socket.

- `priority` - Priority at which the asyn I/O thread will run. If this is zero or missing, then `epicsThreadPriorityMedium` is used.
- `noAutoConnect` - Zero or missing indicates that `portThread` should automatically connect. Non-zero if explicit connect command must be issued.
- `noProcessEos` If 0 then `asynInterposeEosConfig` is called specifying both `processEosIn` and `processEosOut`.

Only `asynOctet` methods `write`, `read`, and `flush` are implemented. Calling the other methods will result in an error unless `asynInterposeEos` is used for the other `asynOctet` methods. `read` blocks until at least one character has been received or until a timeout occurs. `read` transfers as many characters as possible, limited by the specified count.

There are no `asynSetOption` key/value pairs associated with `drvAsynIPPort` connections.

asynInterposeEos and asynInterposeFlush can be used to provide additional functionality.

TCP/IP Server

The drvAsynIPServerPort driver supports asyn socket servers by listening for TCP/IP connections from remote clients. The listener thread then creates a new drvAsynIPPort port by calling drvAsynIPPortConfigure (or re-uses a disconnected port it previously created), and calls back any registered asyn clients with the name of the new port. These asyn clients will typically be socket servers.

TCP/IP server listeners are configured with the drvAsynIPServerPortConfigure command:

```
drvAsynIPServerPortConfigure("portName", "serverInfo", maxClients, priority,
    noAutoConnect, noProcessEos);
```

where the arguments are:

- portName - The portName that is registered with asynManager.
- serverInfo - The Internet host name and port number to listen for connections on (e.g. "localhost:4002"). TCP is the only protocol currently supported.
- maxClients - the maximum number of IP clients that can be simultaneously connected on this port. Additional connect requests will fail.
- priority - Priority at which the listener thread and any asyn I/O ports it creates will run. If this is zero or missing, then epicsThreadPriorityMedium is used.
- noAutoConnect - Zero or missing indicates that the listener port should automatically connect. Non-zero if explicit connect command must be issued. Note that all asyn I/O ports that the listener thread creates will be created with noAutoConnect=1, but this is transparent to socket server applications, because the listener thread does the explicit connect for them.
- noProcessEos is passed to drvAsynIPPortConfigure when new asyn I/O ports are created. If 0 then asynInterposeEosConfig is called specifying both processEosIn and processEosOut.

This driver implements the asynOctet interface. The only methods it supports are registerInterruptUser and cancelInterruptUser. Calling the other asynOctet methods will result in an error. The following happens when a new connection is received on the port specified in drvAsynIPServerPortConfigure:

- If there are no registered asyn clients (who have called registerInterruptUser on the asynOctet interface of the listener port) then the incoming connection is immediately closed, since there are no IP servers available to service it. If there is at least one registered client, then the following steps are executed.
- The list of drvAsynIPPort ports that this listener thread has created is searched to see if there is an existing port that is currently disconnected because the remote IP client disconnected.
- If there is an existing disconnected port, then it is reconnected with the file descriptor from the new IP connection.
- If there is no available existing port, then a new one is created by calling drvAsynIPPortConfigure. The name of the new port is of the form portName:1, portName:2, etc., where portName is the name of the listener port.
- The asynTraceMask and asynTraceIOMask of the newly connected port are set to the current values of the listener thread port. This makes it possible to trace the early stages of execution of the callbacks to the registered clients, before one could enable tracing at iocsh.
- All registered asyn clients (who have called registerInterruptUser on the asynOctet interface of the listener port) are called back with the name of the newly connected port.
- The clients then will connect to this new asyn port and perform I/O using the asynOctet methods.

VXI-11

VXI-11 is a TCP/IP protocol for communicating with IEEE 488.2 devices. It is an RPC based protocol. In addition to the VXI-11 standard, three additional standards are defined.

- VXI-11.1 - A standard for communicating with VXIbus devices. These controllers have a vxibName that starts with "vxi" and can control multiple devices, i.e. the port driver will be a multiaddress driver.
- VXI-11.2 - A standard for communicating with a IEEE 488.1 device. This means that the TCP/IP connection is talking to a GPIB controller that is talking to a GPIB bus. These devices have an vxibName that starts with "gpiib". Note that the Agilent E2050A does not follow the standard. For it the vxibName must be "hpib"
- VXI-11.3 - A standard for communicating with IEEE 488.2 devices. This means that the TCP/IP connection is talking directly with an device. These devices have an vxibName that starts with "inst". These controllers can control only a single device, i.e. the port driver will be a single address driver

NOTES

- No VXI-11.1 controller has been tested.
- The following VXI-11.2 controllers have been tested: Agilent E2050 and E5810
- The following VXI-11.3 instruments have been tested:
 - ◆ Tektronic TDS3054B scope.

SRQs do not work. Do not know why

- ◆ Tektronic TDS5054B scope.

SRQs do work. The asynUser MUST specify addr = 0. Also do NOT set bit 0x40 of Service Request Enable register, i.e. cause SRQ when device has output available. This did not work and can cause infinite set of SRQs

Consult the following documents (available on-line) for details.

```
VMEbus Extensions for Instrumentation
VXI-11 TCP/IP Instrument Protocol Specification
VXI-11.1 TCP/IP-VXIbus Interface Specification
VXI-11.2 TCP/IP-IEEE 488.1 Interface Specification
VXI-11.3 TCP/IP-IEEE 488.2 Instrument Interface Specification
```

The following commands may be specified in the st.cmd file

```
E2050Reboot ("inet_addr")
E5810Reboot ("inet_addr", "password")
vxillConfigure ("portName", "inet_addr", flags, "timeout",
               "vxibName", priority, noAutoConnect)
```

where

- inet_addr - Internet Address
- password - password. If given as 0 the default E5810 is used.
- portName - The portName that is registered with asynGib.
- flags - Bitmap
 - ◆ Bit 1 (0x2) lockDevices - (0,1) => (don't, do) lock devices when creating the link.
 - ◆ Bit 0 (0x1) recoverWithIFC - (0,1) => (don't, do) issue IFC when error occurs.

asynDriver

- timeout - I/O operation timeout in seconds as a string. Prior to release R4-16 this was a double, but was changed to a string because it is not safe to pass doubles on the vxWorks shell. If "0.0", then a default is assigned.
- vxiName - Must be chosen as specified above. NOTE: For the Agilent E2050 vxiName must be "hpib". For the Agilent E5810 use the name "gpib0". For an instrument that supports VXI11 try "inst0".
- priority - Priority at which the asyn I/O thread will run. If this is zero or missing, then epicsThreadPriorityMedium is used.
- noAutoConnect - Zero or missing indicates that portThread should automatically connect. Non-zero if explicit connect command must be issued.

The vxi11 driver implements two timeouts: ioTimeout and rpcTimeout (Remote Procedure Call timeout). The ioTimeout is taken from asynUser:timeout. The rpcTimeout is handled internally for each port. It has a default of 4 seconds but can be changed by calling setOptions. For example:

```
asynSetOption L0 -1 rpctimeout .1
```

Will change the rpcTimeout for port L0 to .1 seconds.

Linux-Gpib

The linux-gpib port driver was written to support [The Linux GPIB Package library](#).

In order to build this support the Linux GPIB Package must be installed. Also in configure/RELEASE the statement:

```
LINUX_GPIB=NO
```

must be changed to

```
LINUX_GPIB=YES
```

Configuration command is:

```
GpibBoardDriverConfig(portName, autoConnect, BoardIndex, timeout, priority)
```

where

- portName - An ascii string specifying the port name that will be registered with asynDriver.
- noAutoConnect - Non-zero indicates that portThread should automatically connect. Zero means explicit connect command must be issued.
- boardIndex - Integer containing index of board (0 means /dev/gpib0). Normally it is 0. This must be the same as in gpib.conf file (minor number - board index) of driver configuration.
- timeout - Time in seconds in which an i/o operation must complete. Zero means disabled. This is "general" timeout for every call to low level drivers. For actual read/write operations timeout must be defined in device support. Both timeouts are converted into integers 0-17 which represents disabled to 1000 seconds.
- priority - An integer specifying the priority of the port thread. A value of 0 will result in a default value being assigned.

An example is:

asynDriver

```
GpibBoardDriverConfig("L0",1,0,3,0)
```

NOTES:

- AsynOption Interface is supported. Key (hexadecimal) and val (integer) arguments to setPortOptions function must be appropriate values represented as character arrays. See GPIB library documentation for details.
- pgpibCmd type GPIBREADW and GPIBEFASTIW were not tested.
- The linux-port driver was tested with PC104-GPIB board from Measurement Computing.

Green Springs IP488

This is support for the Green Springs Industry Pack GPIB carrier. The configuration command is:

```
gsIP488Configure(portName,carrier,module,intVec,priority,noAutoConnect)
```

where

- portName - An ascii string specifying the port name that will be registered with asynDriver.
- carrier - An integer identifying the Industry Pack Carrier
- module - An integer identifying the module on the carrier
- intVec - An integer specifying the interrupt vector
- priority - An integer specifying the priority of the portThread. A value of 0 will result in a default value being assigned
- noAutoConnect - Zero or missing indicates that portThread should automatically connect. Non-zero if explicit connect command must be issued.

An example is:

```
#The following is for the Greensprings IP488 on an MV162  
ipacAddMVME162("A:l=3,3 m=0xe0000000,64")  
gsIP488Configure("L0",0,0,0x61,0,0)
```

WARNING:

This module includes code that implement a 6 microsecond delay because the gpib interface chip requires it. The first time gsIP488Configure is executed code is run to determine a variable used by the delay routine. It assumes that there is no higher priority thread running that consumes lots of cpu cycles.

National Instruments GPIB-1014D

This is support for a National Instruments VME GPIB interface. The configuration command is:

```
ni1014Config(portNameA,portNameB,base,vector,level,priority,noAutoConnect)
```

where

- portNameA - An ascii string specifying the port name that will be registered with asynDriver for portA.
- portNameB - An ascii string specifying the port name that will be registered with asynDriver for portB. If only one port should be registered, then leave this as a null string. The support should also work for a single port NI1014 but has not been tested.

asynDriver

- base - VME A16 base address.
- vector - VME interrupt vector.
- level - An integer specifying the interrupt level.
- priority - In integer specifying the priority of the portThread. A value of 0 will result in a default value being assigned
- noAutoConnect - Zero or missing indicates that portThread should automatically connect. Non-zero if explicit connect command must be issued.

An example is:

```
ni1014Config("L0", "L1", 0x5000, 0x64, 5, 0, 0)
```

NOTES:

- Ports A and B are almost but not quite the same. Thus the code for connecting to port A is slightly different than the code for portB.
- In order to disconnect and reconnect either port, BOTH ports must be disconnected and reconnected.
- When the ports are connected, portA MUST be connected before port B.
- Programmed I/O, via interrupts, rather than DMA is implemented. Thus no A24 address space is required.

WARNING:

This module includes code that implement a 6 microsecond delay because the gpib interface chip requires it. The first time ni1014Config is executed code is run to determine a variable used by the delay routine. It assumes that there is no higher priority thread running that consumes lots of cpu cycles.

asynPortDriver C++ base class

A C++ base class called asynPortDriver is available. This is a base class from which real asyn port drivers can be derived. It greatly simplifies the job of writing an asyn port driver, because it takes care of all of the tasks like registering the port, registering the interfaces, and calling interrupt clients. It is documented separately in [asynPortDriver.html](#).

Diagnostic Aids

iocsh Commands

```
asynReport (level, portName)
asynInterposeFlushConfig (portName, addr, timeout)
asynInterposeEosConfig (portName, addr, processIn, processOut)
asynSetTraceMask (portName, addr, mask)
asynSetTraceIOMask (portName, addr, mask)
asynSetTraceInfoMask (portName, addr, mask)
asynSetTraceFile (portName, addr, filename)
asynSetTraceIOTruncateSize (portName, addr, size)
asynSetOption (portName, addr, key, val)
asynShowOption (portName, addr, key)
asynAutoConnect (portName, addr, yesNo)
asynSetAutoConnectTimeout (timeout)
asynWaitConnect (portName, timeout)
asynEnable (portName, addr, yesNo)
asynOctetConnect (entry, portName, addr, timeout, buffer_len, drvInfo)
```

asynDriver

```
asynOctetRead(entry, nread)
asynOctetWrite(entry, output)
asynOctetWriteRead(entry, output, nread)
asynOctetFlush(entry)
asynOctetSetInputEos(portName, addr, eos, drvInfo)
asynOctetGetInputEos(portName, addr, drvInfo)
asynOctetSetOutputEos(portName, addr, eos, drvInfo)
asynOctetGetOutputEos(portName, addr, drvInfo)
asynRegisterTimeStampSource(portName, functionName);
asynUnregisterTimeStampSource(portName)
```

`asynReport` calls `asynCommon:report` for a specific port if `portName` is specified, or for all registered drivers and `interposeInterface` if `portName` is not specified.

`asynInterposeFlushConfig` is a generic `interposeInterface` that implements flush for low level drivers that don't implement flush. It just issues read requests until no bytes are left to read. The timeout is used for the read requests.

`asynInterposeEosConfig` is a generic `interposeInterface` that implements End of String processing for low level drivers that don't.

`asynSetTraceMask` calls `asynTrace:setTraceMask` for the specified port and address. If `portName` is zero length then the global trace mask is set.

`asynSetTraceIOMask` calls `asynTrace:setTraceIOMask` for the specified port and address. If `portName` is zero length then the global traceIO mask is set.

`asynSetTraceInfoMask` calls `asynTrace:setTraceInfoMask` for the specified port and address. If `portName` is zero length then the global traceInfo mask is set.

`asynSetTraceFile` calls `asynTrace:setTraceFile`. The filename is handled as follows:

- Not specified - A NULL pointer is passed to `setTraceFile`. Subsequent messages are sent to `errlog`.
- An empty string ("") or "stderr" - `stderr` is passed to `setTraceFile`.
- "stdout" - `stdout` is passed to `setTraceFile`.
- Any other string - The specified file is opened with an option of "w" and the file pointer is passed to `setTraceFile`.

`asynSetTraceIOTruncateSize` calls `asynTrace:setTraceIOTruncateSize`

`asynSetOption` calls `asynCommon:setOption`. `asynShowOption` calls `asynCommon:getOption`.

The `asynOctetXXX` commands provide shell access to `asynOctetSyncIO` methods. The entry is a character string constant that identifies the port,addr.

where

- filename - An ascii string naming a file. If null or a null string, then the output is sent to `stdout`.
- level - The report level.
- portName - An ascii string specifying the `portName` of the driver.
- addr - In integer specifying the address of the device. For `multiDevice` ports a value of -1 means the port itself. For ports that support a single device, `addr` is ignored.

asynDriver

- mask - The mask value to set. See the mask bit definitions in asynDriver.h
- key - The key for the option desired.
- val - The value for the option.
- yesNo - The value (0,1) means (no,yes).
- entry - A character string that identifies the asynOctetConnect request.
- timeout - timeout as an integer in milliseconds. The default is 1.
- buffer_len - length of buffer for I/O. Default=160. NOTE: output strings passed to asynOctetWrite can have escape characters. The buffer_len must be large enough to handle escape characters. For example if \x02 appears in an output string it counts as four characters.
- drvInfo - A string to pass to the driver via interface asynDrvUser.
- nread - max number of bytes to read. Default=buffer_len.
- flush - (0,1) means (don't, do) flush before reading. Default=0.
- output - output string.

The commands asynOctetConnect, asynOctetDisconnect, asynOctetRead, asynOctetWrite, asynOctetWriteRead, asynOctetFlush allow I/O to a device from the ioc shell. Examples are:

```
asynOctetConnect ("myid", "A", 0, 1, 20)
asynOctetWrite ("myid", "testnew")
asynOctetRead ("myid")
testnew\n
asynOctetWriteRead ("myid", "this is test")
this is test\n
asynOctetDisconnect ("myid")
```

asynRegisterTimeStampSource calls pasynManager->registerTimeStampSource for the specified port. The time stamp source function must be defined as a "function" in the application dbd file.

asynUnregisterTimeStampSource calls pasynManager->runeregisterTimeStampSource for the specified port. This reverts to the default timestamp source function in asynManager.

Install and Build

Install and Build asynDriver

After obtaining a copy of the distribution, it must be installed and built for use at your site. These steps only need to be performed once for the site (unless versions of the module running under different releases of EPICS and/or the other required modules are needed).

1. Create an installation directory for the module, usually this will end with

```
.../support/asyn/
```

2. Place the distribution file in this directory. Then issue the commands (Unix style)

```
gunzip <file>.tar.gz
tar xvf <file>.tar
```

3. This creates a support <top>.

```
.../support/asyn/X-Y
```

where X-Y is the release number. For example:

asynDriver

.../support/asyn/3-1

4. Edit the `config/RELEASE` file and set the paths to your installation of `EPICS_BASE` and `IPAC`. `IPAC` is only needed if you are building for `vxWorks`.
5. Run `make` in the top level directory and check for any compilation errors.

Using asynDriver Components with an EPICS iocCore Application

Since `asynDriver` does NOT provide support for specific devices an application must obtain device specific support elsewhere. This section only explains how to include `asynDriver` components.

In the `configure/RELEASE` file add definitions for `IPAC`, `ASYN`, and `EPICS_BASE`.

In the `src` directory where the application is built:

- Add the following to `Makefile`

```
<app>_LIBS += asyn
```

- Add the following to `<app>Include.dbd` and uncomment the line or lines appropriate for your application:

```
include "asyn.dbd"  
#include "drvAsynSerialPort.dbd"  
#include "drvAsynIPPort.dbd"  
#include "drvVx11.dbd"  
#include "drvGsIP488.dbd"  
#include "drvIpac.dbd"  
#registrar(mv162ipRegistrar)
```

In the `st.cmd` file add:

```
dbLoadRecords("db/asynRecord.db", "P=<ioc>, R=<record>, PORT=<port>, ADDR=<addr>, OMAX=<omax>,  
IMAX=<imax>")
```

You must provide values for `<ioc>`, `<record>`, `<port>`, `<addr>`, `<omax>`, and `<imax>`.

Once the application is running, `medm` displays for an ioc can be started by: `medm -x -macro "P=<ioc>,R=<record>" <asyn>/medm/asynRecord.adl &`

You must provide correct values for `<ioc>` and `<record>`. Once `asynRecord` is started, it can be connected to different devices.

License Agreement

Copyright (c) 2002 University of Chicago All rights reserved.
`asynDriver` is distributed subject to the following license conditions:

SOFTWARE LICENSE AGREEMENT
Software: `asynDriver`

1. The "Software", below, refers to `asynDriver` (in either source code, or binary form and accompanying documentation). Each licensee is addressed as "you" or "Licensee."

asynDriver

2. The copyright holders shown above and their third-party licensors hereby grant Licensee a royalty-free nonexclusive license, subject to the limitations stated herein and U.S. Government license rights.
3. You may modify and make a copy or copies of the Software for use within your organization, if you meet the following conditions:
 - a. Copies in source code must include the copyright notice and this Software License Agreement.
 - b. Copies in binary form must include the copyright notice and this Software License Agreement in the documentation and/or other materials provided with the copy.
4. You may modify a copy or copies of the Software or any portion of it, thus forming a work based on the Software, and distribute copies of such work outside your organization, if you meet all of the following conditions:
 - a. Copies in source code must include the copyright notice and this Software License Agreement;
 - b. Copies in binary form must include the copyright notice and this Software License Agreement in the documentation and/or other materials provided with the copy;
 - c. Modified copies and works based on the Software must carry prominent notices stating that you changed specified portions of the Software.
5. Portions of the Software resulted from work developed under a U.S. Government contract and are subject to the following license: the Government is granted for itself and others acting on its behalf a paid-up, nonexclusive, irrevocable worldwide license in this computer software to reproduce, prepare derivative works, and perform publicly and display publicly.
6. WARRANTY DISCLAIMER. THE SOFTWARE IS SUPPLIED "AS IS" WITHOUT WARRANTY OF ANY KIND. THE COPYRIGHT HOLDERS, THEIR THIRD PARTY LICENSORS, THE UNITED STATES, THE UNITED STATES DEPARTMENT OF ENERGY, AND THEIR EMPLOYEES: (1) DISCLAIM ANY WARRANTIES, EXPRESS OR IMPLIED, INCLUDING BUT NOT LIMITED TO ANY IMPLIED WARRANTIES OF MERCHANTABILITY, FITNESS FOR A PARTICULAR PURPOSE, TITLE OR NON-INFRINGEMENT, (2) DO NOT ASSUME ANY LEGAL LIABILITY OR RESPONSIBILITY FOR THE ACCURACY, COMPLETENESS, OR USEFULNESS OF THE SOFTWARE, (3) DO NOT REPRESENT THAT USE OF THE SOFTWARE WOULD NOT INFRINGE PRIVATELY OWNED RIGHTS, (4) DO NOT WARRANT THAT THE SOFTWARE WILL FUNCTION UNINTERRUPTED, THAT IT IS ERROR-FREE OR THAT ANY ERRORS WILL BE CORRECTED.
7. LIMITATION OF LIABILITY. IN NO EVENT WILL THE COPYRIGHT HOLDERS, THEIR THIRD PARTY LICENSORS, THE UNITED STATES, THE UNITED STATES DEPARTMENT OF ENERGY, OR THEIR EMPLOYEES: BE LIABLE FOR ANY INDIRECT, INCIDENTAL, CONSEQUENTIAL, SPECIAL OR PUNITIVE DAMAGES OF ANY KIND OR NATURE, INCLUDING BUT NOT LIMITED TO LOSS OF PROFITS OR LOSS OF DATA, FOR ANY REASON WHATSOEVER, WHETHER SUCH LIABILITY IS ASSERTED ON THE BASIS OF CONTRACT, TORT (INCLUDING NEGLIGENCE OR STRICT LIABILITY), OR OTHERWISE, EVEN IF ANY OF SAID PARTIES HAS BEEN WARNED OF THE POSSIBILITY OF SUCH LOSS OR DAMAGES.

asynDriver